

# Product Datasheet

## ERCC1 Antibody (OT11C10)

### NBP2-01829

Unit Size: 0.1 ml

Store at -20C. Avoid freeze-thaw cycles.

[www.novusbio.com](http://www.novusbio.com)



[technical@novusbio.com](mailto:technical@novusbio.com)

Protocols, Publications, Related Products, Reviews, Research Tools and Images at:  
[www.novusbio.com/NBP2-01829](http://www.novusbio.com/NBP2-01829)

Updated 9/6/2018 v.20.1

Earn rewards for product  
reviews and publications.

Submit a publication at [www.novusbio.com/publications](http://www.novusbio.com/publications)

Submit a review at [www.novusbio.com/reviews/destination/NBP2-01829](http://www.novusbio.com/reviews/destination/NBP2-01829)



**NBP2-01829**

ERCC1 Antibody (OTI1C10)

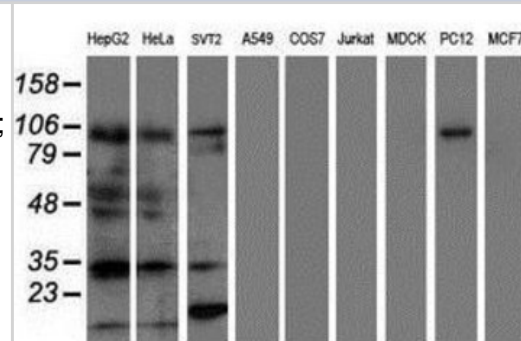
Product Information	
<b>Unit Size</b>	0.1 ml
<b>Concentration</b>	Please see the vial label for concentration. If unlisted please contact technical services.
<b>Storage</b>	Store at -20C. Avoid freeze-thaw cycles.
<b>Clonality</b>	Monoclonal
<b>Clone</b>	OTI1C10
<b>Preservative</b>	0.02% Sodium Azide
<b>Isotype</b>	IgG2a
<b>Purity</b>	Immunogen affinity purified
<b>Buffer</b>	PBS (pH 7.3), 1.0% BSA and 50% Glycerol
<b>Target Molecular Weight</b>	32.4 kDa

Product Description	
<b>Host</b>	Mouse
<b>Gene ID</b>	2067
<b>Gene Symbol</b>	ERCC1
<b>Species</b>	Human, Mouse
<b>Reactivity Notes</b>	Human, Mouse. Please note that this antibody is reactive to Mouse and derived from the same host, Mouse. Additional Mouse on Mouse blocking steps may be required for IHC and ICC experiments. Please contact Technical Support for more information.
<b>Immunogen</b>	Full length recombinant protein of human ERCC1 (NP_001974) produced in HEK293T cells.

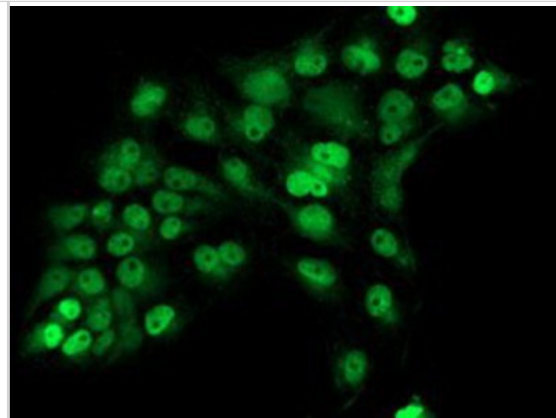
Product Application Details	
<b>Applications</b>	Western Blot, Flow Cytometry, Immunocytochemistry/Immunofluorescence
<b>Recommended Dilutions</b>	Western Blot 1:500-2000, Flow Cytometry 1:100, Immunocytochemistry/Immunofluorescence 1:100

**Images**

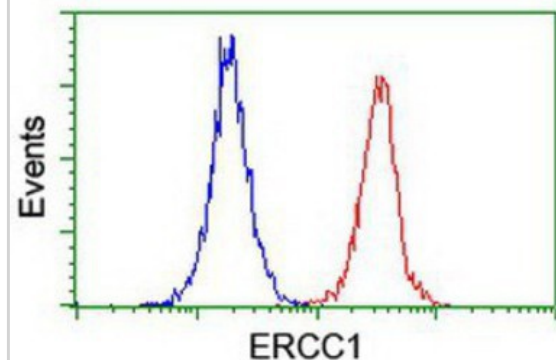
Western Blot: ERCC1 Antibody (1C10) [NBP2-01829] Analysis of extracts (35ug) from 9 different cell lines by using anti-ERCC1 monoclonal antibody (HepG2: human; HeLa: human; SVT2: mouse; A549: human; COS7: monkey; Jurkat: human; MDCK: canine; PC12: rat; MCF7: human).



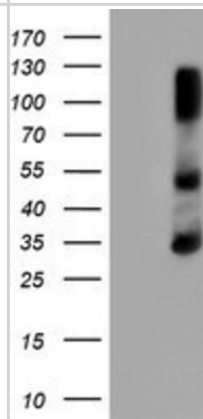
Immunocytochemistry/Immunofluorescence: ERCC1 Antibody (1C10) [NBP2-01829] - Staining of COS7 cells transiently transfected by pCMV6-ENTRY ERCC1.



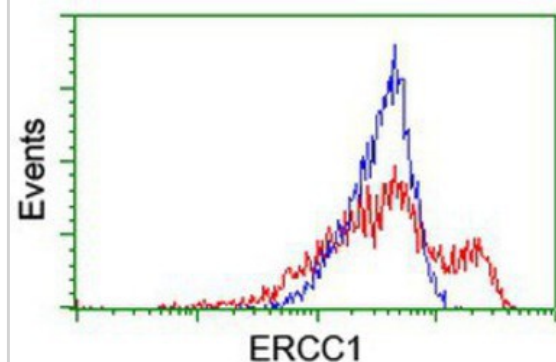
Flow Cytometry: ERCC1 Antibody (1C10) [NBP2-01829] - Analysis of Jurkat cells, using anti-ERCC1 antibody, (Red), compared to a nonspecific negative control antibody (Blue).



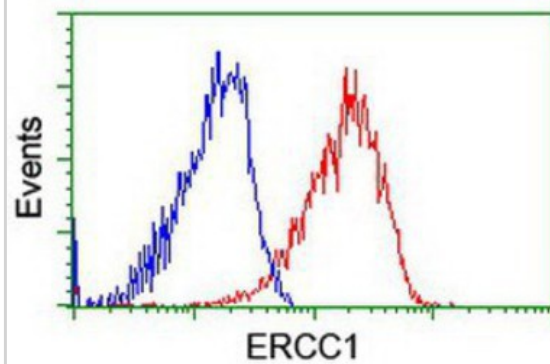
Western Blot: ERCC1 Antibody (1C10) [NBP2-01829] - HEK293T cells were transfected with the pCMV6-ENTRY control (Left lane) or pCMV6-ENTRY ERCC1 (Right lane) cDNA for 48 hrs and lysed. Equivalent amounts of cell lysates (5 ug per lane) were separated by SDS-PAGE and immunoblotted with anti-ERCC1.



Immunocytochemistry/Immunofluorescence: ERCC1 Antibody (1C10) [NBP2-01829] - HEK293T cells transfected with either overexpression plasmid (Red) or empty vector control plasmid (Blue) were immunostained by anti-ERCC1 antibody, and then analyzed by flow cytometry.



Flow Cytometry: ERCC1 Antibody (1C10) [NBP2-01829] - Analysis of HeLa cells, using anti-ERCC1 antibody, (Red), compared to a nonspecific negative control antibody (Blue).





### **Novus Biologicals USA**

10730 E. Briarwood Avenue  
Centennial, CO 80112  
USA

Phone: 303.730.1950  
Toll Free: 1.888.506.6887  
Fax: 303.730.1966  
novus@novusbio.com

### **Novus Biologicals Canada**

461 North Service Road West, Unit B37  
Oakville, ON L6M 2V5  
Canada

Phone: 905.827.6400  
Toll Free: 855.668.8722  
Fax: 905.827.6402  
canada@novusbio.com

### **Novus Biologicals Europe**

19 Barton Lane  
Abingdon Science Park  
Abingdon, OX14 3NB, United Kingdom

Phone: (44) (0) 1235 529449  
Free Phone: 0800 37 34 15  
Fax: (44) (0) 1235 533420  
info@bio-techne.com

### **General Contact Information**

www.novusbio.com  
Technical Support: technical@novusbio.com  
Orders: orders@novusbio.com  
General: novus@novusbio.com

### **Limitations**

This product is for research use only and is not approved for use in humans or in clinical diagnosis. Primary Antibodies are guaranteed for 1 year from date of receipt.

For more information on our 100% guarantee, please visit [www.novusbio.com/guarantee](http://www.novusbio.com/guarantee)

Earn gift cards/discounts by submitting a review: [www.novusbio.com/reviews/submit/NBP2-01829](http://www.novusbio.com/reviews/submit/NBP2-01829)

Earn gift cards/discounts by submitting a publication using this product:  
[www.novusbio.com/publications](http://www.novusbio.com/publications)

