

Product Datasheet

LMP2/PSMB9 Antibody (OTI1D1)

NBP2-01817

Unit Size: 0.1 ml

Store at -20C. Avoid freeze-thaw cycles.

www.novusbio.com



technical@novusbio.com

Protocols, Publications, Related Products, Reviews, Research Tools and Images at:
www.novusbio.com/NBP2-01817

Updated 10/23/2024 v.20.1

Earn rewards for product
reviews and publications.

Submit a publication at www.novusbio.com/publications

Submit a review at www.novusbio.com/reviews/destination/NBP2-01817



NBP2-01817

LMP2/PSMB9 Antibody (OTI1D1)

Product Information

Unit Size	0.1 ml
Concentration	1.29 mg/ml
Storage	Store at -20C. Avoid freeze-thaw cycles.
Clonality	Monoclonal
Clone	OTI1D1
Preservative	0.02% Sodium Azide
Isotype	IgG2a
Purity	Immunogen affinity purified
Buffer	PBS (pH 7.3), 1.0% BSA, 50% Glycerol
Target Molecular Weight	23.1 kDa

Product Description

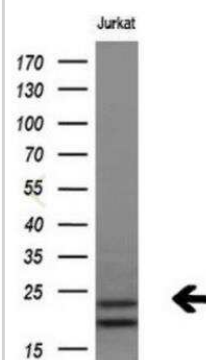
Host	Mouse
Gene ID	5698
Gene Symbol	PSMB9
Species	Human, Mouse, Rat
Reactivity Notes	Please note that this antibody is reactive to Mouse and derived from the same host, Mouse. Mouse-On-Mouse blocking reagent may be needed for IHC and ICC experiments to reduce high background signal. You can find these reagents under catalog numbers PK-2200-NB and MP-2400-NB. Please contact Technical Support if you have any questions.
Immunogen	Human recombinant protein fragment corresponding to amino acids 21-219 of human PSMB9(NP_002791) produced in E.coli.

Product Application Details

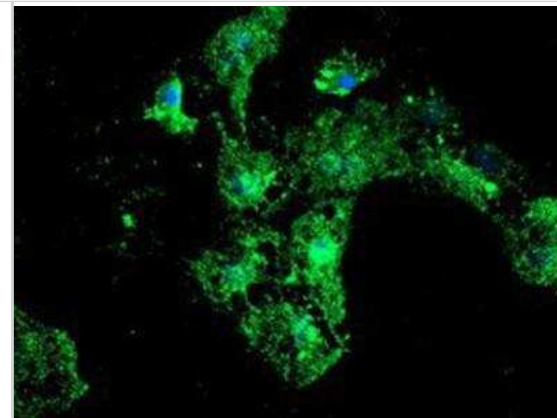
Applications	Western Blot, Flow Cytometry, Immunocytochemistry/ Immunofluorescence, Immunohistochemistry, Immunohistochemistry-Paraffin
Recommended Dilutions	Western Blot 1:2000, Flow Cytometry 1:100, Immunohistochemistry 1:150, Immunocytochemistry/ Immunofluorescence 1:100, Immunohistochemistry-Paraffin 1:150

Images

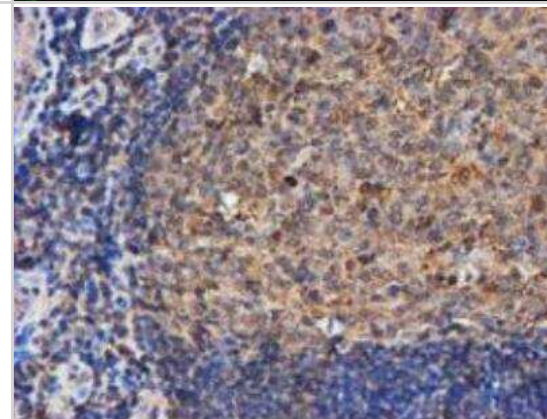
Western Blot: LMP2/PSMB9 Antibody (OTI1D1) [NBP2-01817] - Analysis of extracts (10ug) from Jurkat cell line by using anti-PSMB9 monoclonal antibody (1:200).



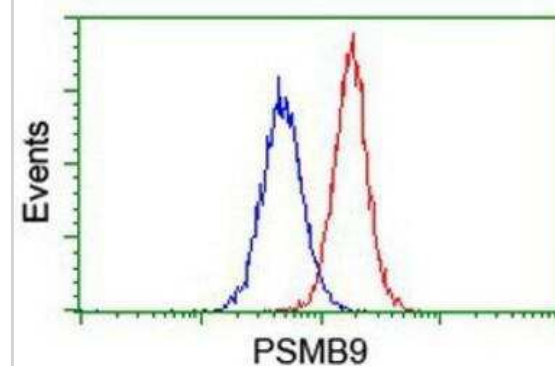
Immunocytochemistry/Immunofluorescence: LMP2/PSMB9 Antibody (OT1D1) [NBP2-01817] - Staining of COS7 cells transiently transfected by pCMV6-ENTRY Proteasome 20S LMP2.



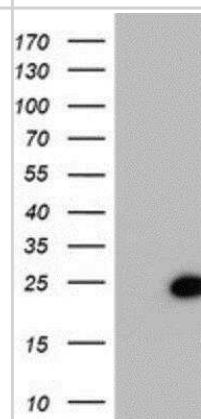
Immunohistochemistry-Paraffin: LMP2/PSMB9 Antibody (1D1) [NBP2-01817] - Human tonsil.



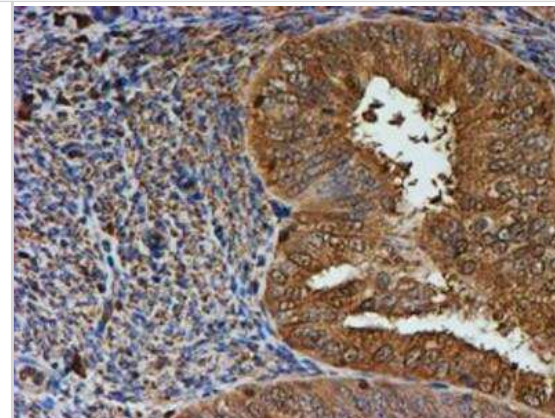
Flow Cytometry: LMP2/PSMB9 Antibody (1D1) [NBP2-01817] - Analysis of Jurkat cells, using anti-Proteasome 20S LMP2 antibody, (Red), compared to a nonspecific negative control antibody (Blue).



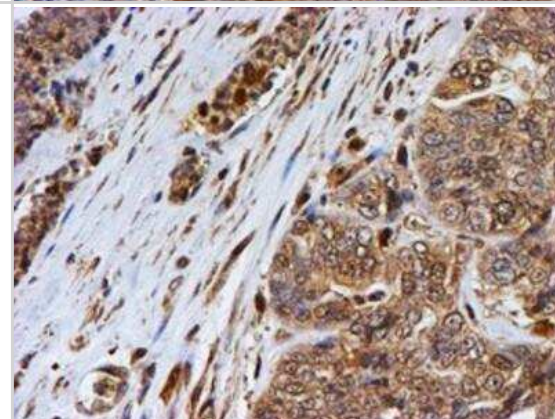
Western Blot: LMP2/PSMB9 Antibody (1D1) [NBP2-01817] - HEK293T cells were transfected with the pCMV6-ENTRY control (Left lane) or pCMV6-ENTRY Proteasome 20S LMP2 (Right lane) cDNA for 48 hrs and lysed. Equivalent amounts of cell lysates (5 ug per lane) were separated by SDS-PAGE and immunoblotted with anti-Proteasome 20S LMP2.



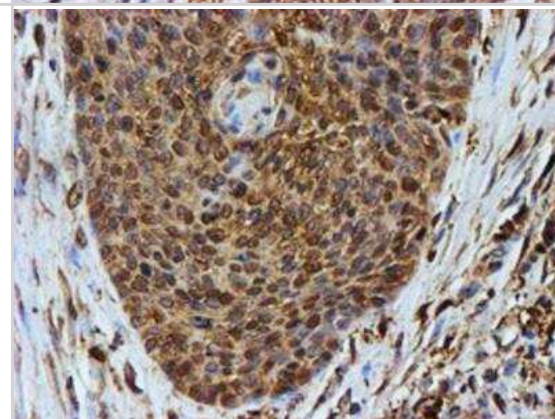
Immunohistochemistry-Paraffin: LMP2/PSMB9 Antibody (1D1) [NBP2-01817] - Staining of paraffin-embedded Adenocarcinoma of Human endometrium tissue using anti-Proteasome 20S LMP2 mouse monoclonal antibody.



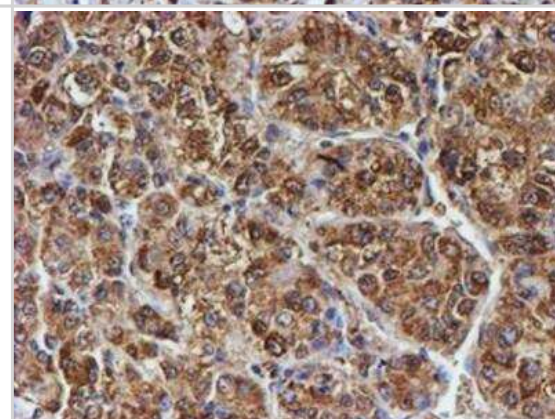
Immunohistochemistry-Paraffin: LMP2/PSMB9 Antibody (1D1) [NBP2-01817] - Staining of paraffin-embedded Adenocarcinoma of Human ovary tissue using anti-Proteasome 20S LMP2 mouse monoclonal antibody.



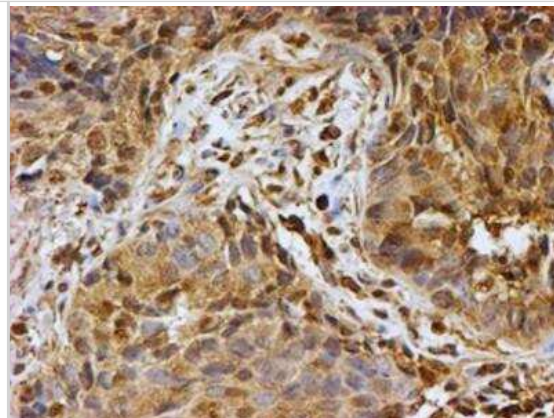
Immunohistochemistry-Paraffin: LMP2/PSMB9 Antibody (1D1) [NBP2-01817] - Staining of paraffin-embedded Carcinoma of Human bladder tissue using anti-Proteasome 20S LMP2 mouse monoclonal antibody.



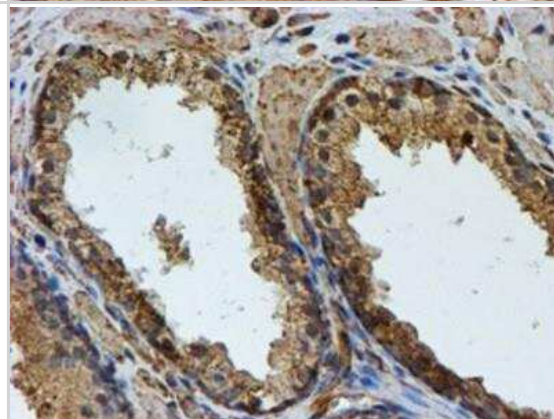
Immunohistochemistry-Paraffin: LMP2/PSMB9 Antibody (1D1) [NBP2-01817] - Staining of paraffin-embedded Carcinoma of Human liver tissue using anti-Proteasome 20S LMP2 mouse monoclonal antibody.



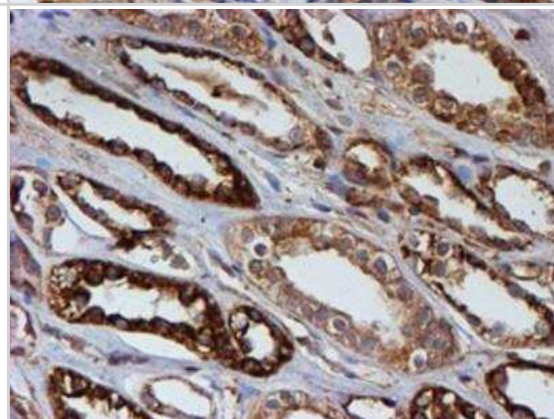
Immunohistochemistry-Paraffin: LMP2/PSMB9 Antibody (1D1) [NBP2-01817] - Staining of paraffin-embedded Carcinoma of Human lung tissue using anti-Proteasome 20S LMP2 mouse monoclonal antibody.



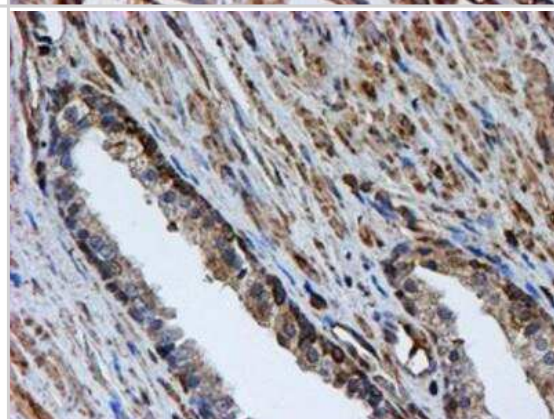
Immunohistochemistry-Paraffin: LMP2/PSMB9 Antibody (1D1) [NBP2-01817] - Staining of paraffin-embedded Carcinoma of Human prostate tissue using anti-Proteasome 20S LMP2 mouse monoclonal antibody.



Immunohistochemistry-Paraffin: LMP2/PSMB9 Antibody (1D1) [NBP2-01817] - Staining of paraffin-embedded Human Kidney tissue using anti-Proteasome 20S LMP2 mouse monoclonal antibody.



Immunohistochemistry-Paraffin: LMP2/PSMB9 Antibody (1D1) [NBP2-01817] - Staining of paraffin-embedded Human prostate tissue using anti-Proteasome 20S LMP2 mouse monoclonal antibody.





Novus Biologicals USA

10730 E. Briarwood Avenue
Centennial, CO 80112
USA
Phone: 303.730.1950
Toll Free: 1.888.506.6887
Fax: 303.730.1966
nb-customerservice@bio-techne.com

Bio-Techne Canada

21 Canmotor Ave
Toronto, ON M8Z 4E6
Canada
Phone: 905.827.6400
Toll Free: 855.668.8722
Fax: 905.827.6402
canada.inquires@bio-techne.com

Bio-Techne Ltd

19 Barton Lane
Abingdon Science Park
Abingdon, OX14 3NB, United Kingdom
Phone: (44) (0) 1235 529449
Free Phone: 0800 37 34 15
Fax: (44) (0) 1235 533420
info.EMEA@bio-techne.com

General Contact Information

www.novusbio.com
Technical Support: nb-technical@bio-techne.com
Orders: nb-customerservice@bio-techne.com
General: novus@novusbio.com

Products Related to NBP2-01817

HAF007	Goat anti-Mouse IgG Secondary Antibody [HRP]
NB720-B	Rabbit anti-Mouse IgG (H+L) Secondary Antibody [Biotin]
NBP1-96778	Mouse IgG2a Isotype Control (M2A)
NBP1-51067-0.05mg	Recombinant Human LMP2/PSMB9 His Protein

Limitations

This product is for research use only and is not approved for use in humans or in clinical diagnosis. Primary Antibodies are guaranteed for 1 year from date of receipt.

For more information on our 100% guarantee, please visit www.novusbio.com/guarantee

Earn gift cards/discounts by submitting a review: www.novusbio.com/reviews/submit/NBP2-01817

Earn gift cards/discounts by submitting a publication using this product:
www.novusbio.com/publications

