

Product Datasheet

TUBAL3 Antibody (OTI4C5)

NBP2-01476

Unit Size: 0.1 ml

Store at -20C. Avoid freeze-thaw cycles.

www.novusbio.com



technical@novusbio.com

Protocols, Publications, Related Products, Reviews, Research Tools and Images at:
www.novusbio.com/NBP2-01476

Updated 10/23/2024 v.20.1

Earn rewards for product
reviews and publications.

Submit a publication at www.novusbio.com/publications

Submit a review at www.novusbio.com/reviews/destination/NBP2-01476



NBP2-01476**TUBAL3 Antibody (OTI4C5)****Product Information**

| | |
|--------------------------------|--|
| Unit Size | 0.1 ml |
| Concentration | 0.55 mg/ml |
| Storage | Store at -20C. Avoid freeze-thaw cycles. |
| Clonality | Monoclonal |
| Clone | OTI4C5 |
| Preservative | 0.02% Sodium Azide |
| Isotype | IgG2b |
| Purity | Immunogen affinity purified |
| Buffer | PBS (pH 7.3), 1.0% BSA and 50% Glycerol |
| Target Molecular Weight | 49.7 kDa |

Product Description

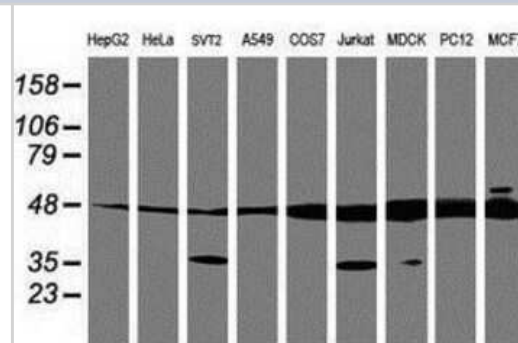
| | |
|-------------------------|---|
| Host | Mouse |
| Gene ID | 79861 |
| Gene Symbol | TUBAL3 |
| Species | Human, Mouse, Rat, Canine, Primate, Monkey |
| Reactivity Notes | Please note that this antibody is reactive to Mouse and derived from the same host, Mouse. Mouse-On-Mouse blocking reagent may be needed for IHC and ICC experiments to reduce high background signal. You can find these reagents under catalog numbers PK-2200-NB and MP-2400-NB. Please contact Technical Support if you have any questions. |
| Immunogen | Human recombinant protein fragment corresponding to amino acids 150-446 of human TUBAL3(NP_079079) produced in E.coli. |

Product Application Details

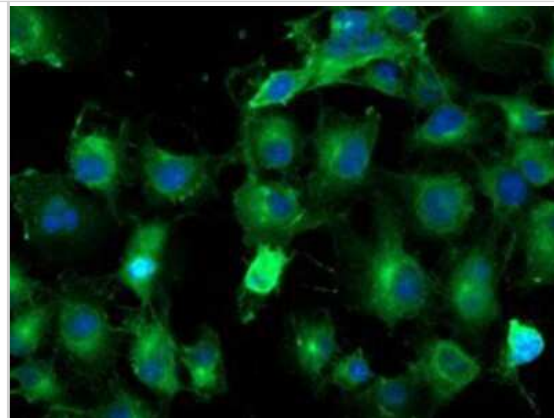
| | |
|------------------------------|---|
| Applications | Western Blot, Flow Cytometry, Immunocytochemistry/ Immunofluorescence, Immunohistochemistry, Immunohistochemistry-Paraffin |
| Recommended Dilutions | Western Blot 1:500-2000, Flow Cytometry 1:100, Immunohistochemistry 1:150, Immunocytochemistry/ Immunofluorescence 1:100, Immunohistochemistry-Paraffin 1:150 |

Images

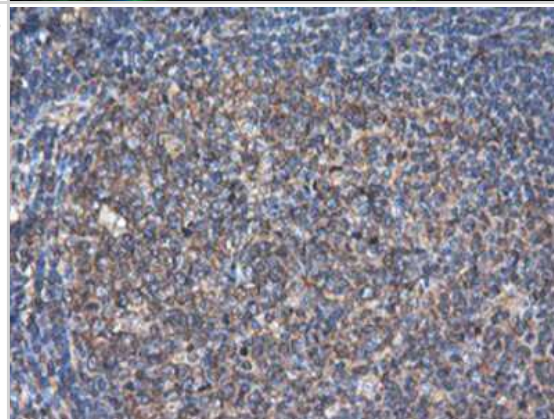
Western Blot: TUBAL3 Antibody (4C5) [NBP2-01476] Analysis of extracts (35ug) from 9 different cell lines by using anti-TUBAL3 monoclonal antibody.



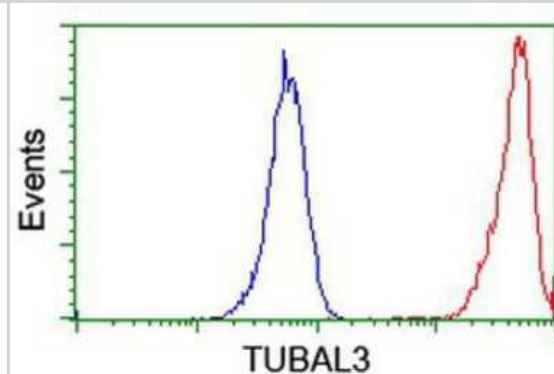
Immunocytochemistry/Immunofluorescence: TUBAL3 Antibody (4C5) [NBP2-01476] - Staining of COS7 cells transiently transfected by pCMV6-ENTRY TUBAL3.



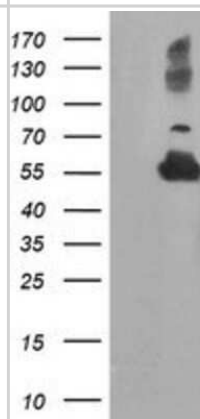
Immunohistochemistry-Paraffin: TUBAL3 Antibody (4C5) [NBP2-01476] - Staining of paraffin-embedded Human tonsil using anti-TUBAL3 mouse monoclonal antibody.



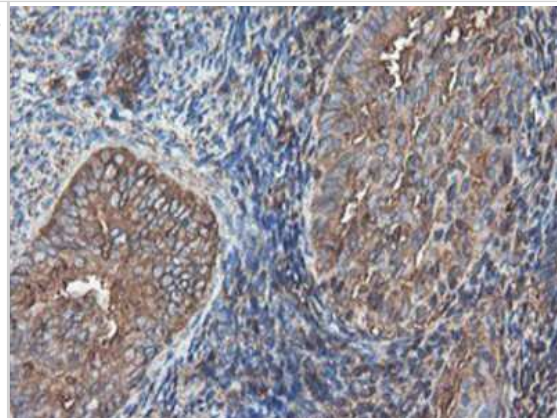
Flow Cytometry: TUBAL3 Antibody (4C5) [NBP2-01476] - Analysis of Jurkat cells, using anti-TUBAL3 antibody, (Red), compared to a nonspecific negative control antibody (Blue).



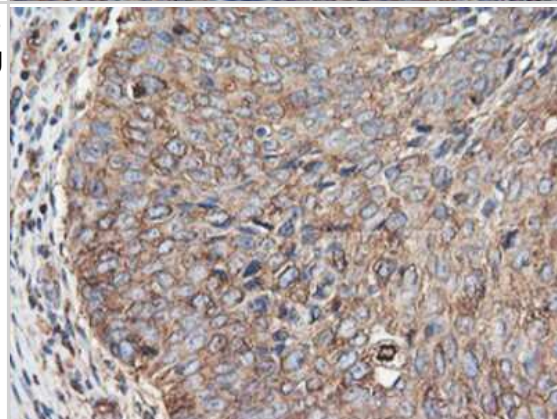
Western Blot: TUBAL3 Antibody (4C5) [NBP2-01476] - HEK293T cells were transfected with the pCMV6-ENTRY control (Left lane) or pCMV6-ENTRY TUBAL3 (Right lane) cDNA for 48 hrs and lysed. Equivalent amounts of cell lysates (5 ug per lane) were separated by SDS-PAGE and immunoblotted with anti-TUBAL3.



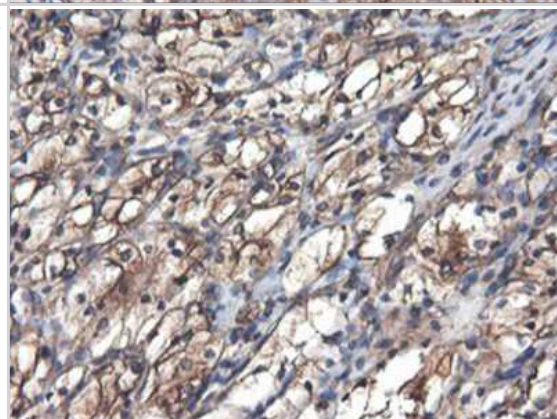
Immunohistochemistry-Paraffin: TUBAL3 Antibody (4C5) [NBP2-01476] - Staining of paraffin-embedded Adenocarcinoma of Human endometrium tissue using anti-TUBAL3 mouse monoclonal antibody.



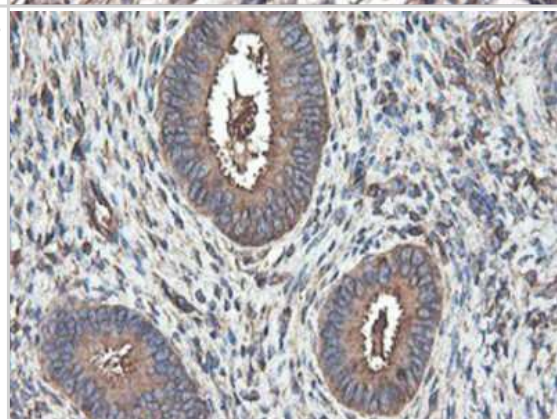
Immunohistochemistry-Paraffin: TUBAL3 Antibody (4C5) [NBP2-01476] - Staining of paraffin-embedded Carcinoma of Human bladder tissue using anti-TUBAL3 mouse monoclonal antibody.



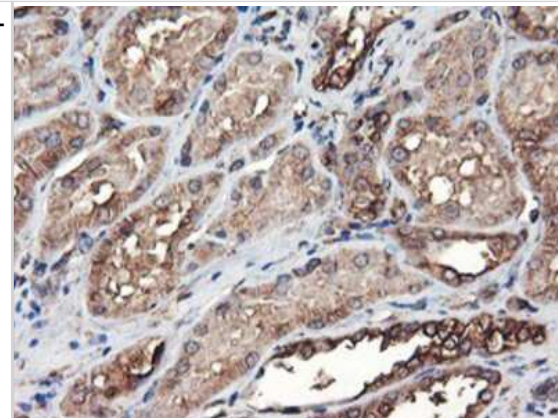
Immunohistochemistry-Paraffin: TUBAL3 Antibody (4C5) [NBP2-01476] - Staining of paraffin-embedded Carcinoma of Human kidney tissue using anti-TUBAL3 mouse monoclonal antibody.



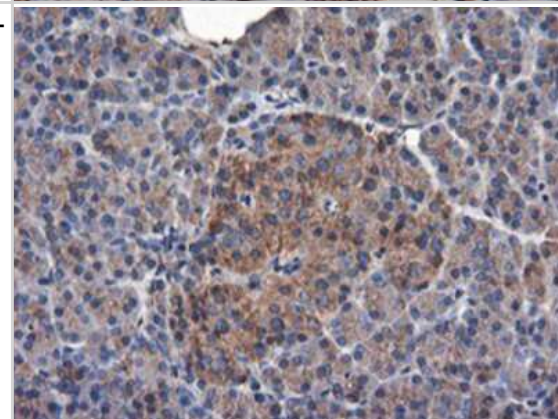
Immunohistochemistry-Paraffin: TUBAL3 Antibody (4C5) [NBP2-01476] - Staining of paraffin-embedded Human endometrium tissue using anti-TUBAL3 mouse monoclonal antibody.



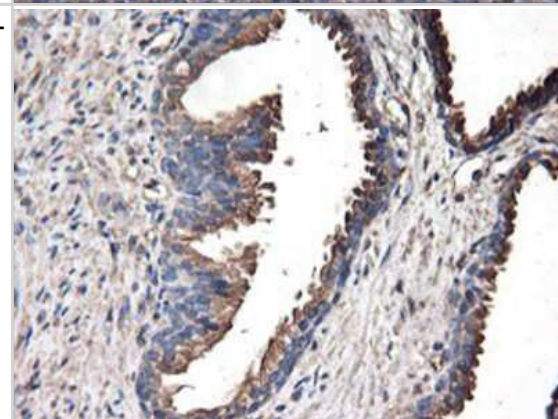
Immunohistochemistry-Paraffin: TUBAL3 Antibody (4C5) [NBP2-01476] - Staining of paraffin-embedded Human Kidney tissue using anti-TUBAL3 mouse monoclonal antibody.



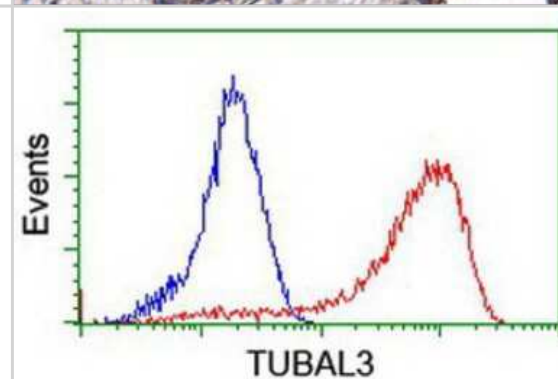
Immunohistochemistry-Paraffin: TUBAL3 Antibody (4C5) [NBP2-01476] - Staining of paraffin-embedded Human pancreas tissue using anti-TUBAL3 mouse monoclonal antibody.



Immunohistochemistry-Paraffin: TUBAL3 Antibody (4C5) [NBP2-01476] - Staining of paraffin-embedded Human prostate tissue using anti-TUBAL3 mouse monoclonal antibody.



Flow Cytometry: TUBAL3 Antibody (4C5) [NBP2-01476] - Analysis of Hela cells, using anti-TUBAL3 antibody, (Red), compared to a nonspecific negative control antibody (Blue).





Novus Biologicals USA

10730 E. Briarwood Avenue
Centennial, CO 80112
USA
Phone: 303.730.1950
Toll Free: 1.888.506.6887
Fax: 303.730.1966
nb-customerservice@bio-techne.com

Bio-Techne Canada

21 Canmotor Ave
Toronto, ON M8Z 4E6
Canada
Phone: 905.827.6400
Toll Free: 855.668.8722
Fax: 905.827.6402
canada.inquires@bio-techne.com

Bio-Techne Ltd

19 Barton Lane
Abingdon Science Park
Abingdon, OX14 3NB, United Kingdom
Phone: (44) (0) 1235 529449
Free Phone: 0800 37 34 15
Fax: (44) (0) 1235 533420
info.EMEA@bio-techne.com

General Contact Information

www.novusbio.com
Technical Support: nb-technical@bio-techne.com
Orders: nb-customerservice@bio-techne.com
General: novus@novusbio.com

Products Related to NBP2-01476

| | |
|--------------------|---|
| HAF007 | Goat anti-Mouse IgG Secondary Antibody [HRP] |
| NB720-B | Rabbit anti-Mouse IgG (H+L) Secondary Antibody [Biotin] |
| NBP2-27231 | Mouse IgG2b Isotype Control (MPC-11) |
| H00079861-P01-10ug | Recombinant Human TUBAL3 GST (N-Term) Protein |

Limitations

This product is for research use only and is not approved for use in humans or in clinical diagnosis. Primary Antibodies are guaranteed for 1 year from date of receipt.

For more information on our 100% guarantee, please visit www.novusbio.com/guarantee

Earn gift cards/discounts by submitting a review: www.novusbio.com/reviews/submit/NBP2-01476

Earn gift cards/discounts by submitting a publication using this product:
www.novusbio.com/publications

