

Product Datasheet

SERPINB13 Antibody (OTI2B6)

NBP2-01312

Unit Size: 0.1 ml

Store at -20C. Avoid freeze-thaw cycles.

www.novusbio.com



technical@novusbio.com

Publications: 1

Protocols, Publications, Related Products, Reviews, Research Tools and Images at:
www.novusbio.com/NBP2-01312

Updated 10/23/2024 v.20.1

Earn rewards for product
reviews and publications.

Submit a publication at www.novusbio.com/publications

Submit a review at www.novusbio.com/reviews/destination/NBP2-01312



NBP2-01312

SERPINB13 Antibody (OTI2B6)

Product Information

Unit Size	0.1 ml
Concentration	1 mg/ml
Storage	Store at -20C. Avoid freeze-thaw cycles.
Clonality	Monoclonal
Clone	OTI2B6
Preservative	0.02% Sodium Azide
Isotype	IgG1
Purity	Immunogen affinity purified
Buffer	PBS (pH 7.3), 1.0% BSA and 50% Glycerol
Target Molecular Weight	44.1 kDa

Product Description

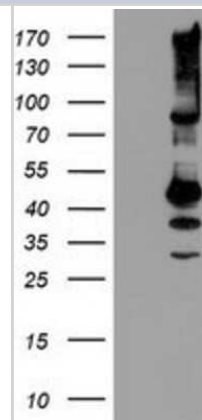
Host	Mouse
Gene ID	5275
Gene Symbol	SERPINB13
Species	Human
Immunogen	Full length human recombinant protein of human SERPINB13(NP_036529) produced in HEK293T cell.

Product Application Details

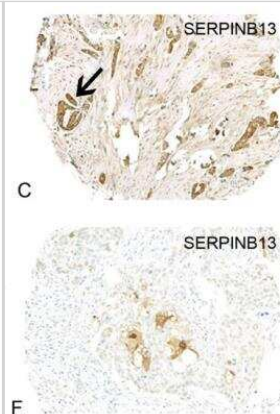
Applications	Western Blot, Immunohistochemistry, Immunohistochemistry-Paraffin
Recommended Dilutions	Western Blot 1:2000, Immunohistochemistry 1:150, Immunohistochemistry-Paraffin 1:150

Images

Western Blot: SERPINB13 Antibody (2B6) [NBP2-01312] - HEK293T cells were transfected with the pCMV6-ENTRY control (Left lane) or pCMV6-ENTRY SERPINB13 (Right lane) cDNA for 48 hrs and lysed. Equivalent amounts of cell lysates (5 ug per lane) were separated by SDS-PAGE and immunoblotted with anti-SERPINB13.



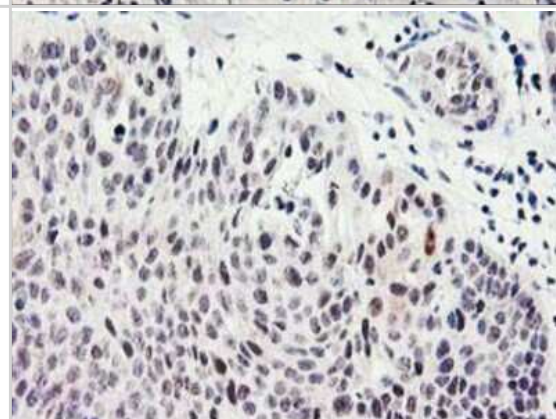
Immunohistochemistry: SERPINB13 Antibody (OTI2B6) [NBP2-01312] - Cytoplasmic staining was detected for Serpin B13 protein in the malignant epithelium of breast cancer. The majority of 'pure' HER2+ (HER2+/ER-/PR-) tumours showed loss of SERPIN B13 staining. Image collected and cropped by CiteAb from the following publication (<https://www.nature.com/articles/s41419-018-0364-9>), licensed under a CC-BY license.



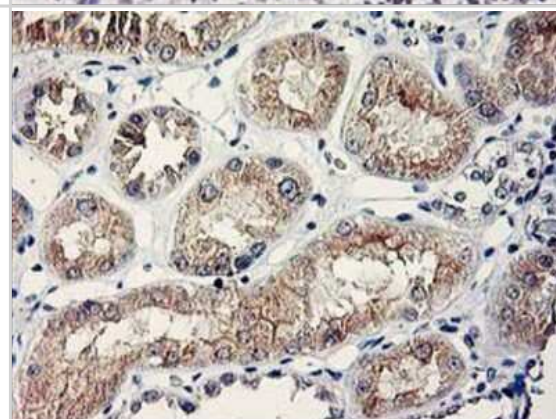
Immunohistochemistry-Paraffin: SERPINB13 Antibody (2B6) [NBP2-01312] - Staining of paraffin-embedded Adenocarcinoma of Human breast tissue using anti-SERPINB13 mouse monoclonal antibody.



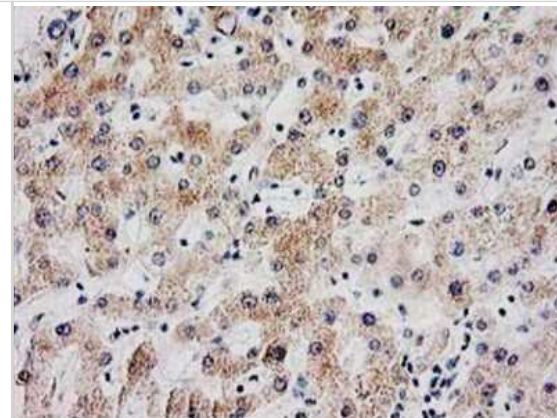
Immunohistochemistry-Paraffin: SERPINB13 Antibody (2B6) [NBP2-01312] - Staining of paraffin-embedded Carcinoma of Human bladder tissue using anti-SERPINB13 mouse monoclonal antibody.



Immunohistochemistry-Paraffin: SERPINB13 Antibody (2B6) [NBP2-01312] - Staining of paraffin-embedded Human Kidney tissue using anti-SERPINB13 mouse monoclonal antibody.



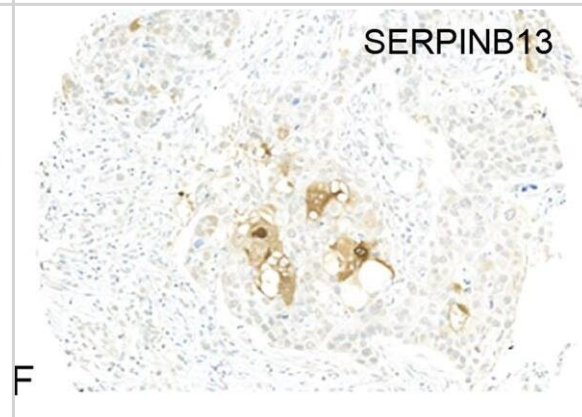
Immunohistochemistry-Paraffin: SERPINB13 Antibody (2B6) [NBP2-01312] Staining of paraffin-embedded Human liver tissue using anti-SERPINB13 mouse monoclonal antibody.



Immunohistochemistry: SERPINB13 Antibody (OTI2B6) [NBP2-01312] - Cytoplasmic staining was detected for (a) MTSS1, (b) SCAMP1 & (c) Serpin B13 protein in the malignant epithelium of breast cancer. Alternatively, the majority of 'pure' HER2+ (HER2+/ER-/PR-) tumours showed loss or in (d) MTSS1, (e) SCAMP1 & (f) SERPIN B13 staining. g Distribution of MTSS1, SCAMP1 & SERPIN B13 in the 'pure' HER2 patient class versus other tumour classes Image collected & cropped by CiteAb from the following publication (<https://www.nature.com/articles/s41419-018-0364-9>), licensed under a CC-BY license. Not internally tested by Novus Biologicals.



Immunohistochemistry: SERPINB13 Antibody (OTI2B6) [NBP2-01312] - Cytoplasmic staining was detected for (a) MTSS1, (b) SCAMP1 & (c) Serpin B13 protein in the malignant epithelium of breast cancer. Alternatively, the majority of 'pure' HER2+ (HER2+/ER-/PR-) tumours showed loss or in (d) MTSS1, (e) SCAMP1 & (f) SERPIN B13 staining. g Distribution of MTSS1, SCAMP1 & SERPIN B13 in the 'pure' HER2 patient class versus other tumour classes Image collected & cropped by CiteAb from the following publication (<https://www.nature.com/articles/s41419-018-0364-9>), licensed under a CC-BY license. Not internally tested by Novus Biologicals.



Publications

Vadakekolathu J, Al-Juboori SIK, Johnson C et al. MTSS1 and SCAMP1 cooperate to prevent invasion in breast cancer. Cell Death Dis. 2018-03-01 [PMID: 29497041] (IF/IHC, Human)



Novus Biologicals USA

10730 E. Briarwood Avenue
Centennial, CO 80112
USA
Phone: 303.730.1950
Toll Free: 1.888.506.6887
Fax: 303.730.1966
nb-customerservice@bio-techne.com

Bio-Techne Canada

21 Canmotor Ave
Toronto, ON M8Z 4E6
Canada
Phone: 905.827.6400
Toll Free: 855.668.8722
Fax: 905.827.6402
canada.inquires@bio-techne.com

Bio-Techne Ltd

19 Barton Lane
Abingdon Science Park
Abingdon, OX14 3NB, United Kingdom
Phone: (44) (0) 1235 529449
Free Phone: 0800 37 34 15
Fax: (44) (0) 1235 533420
info.EMEA@bio-techne.com

General Contact Information

www.novusbio.com
Technical Support: nb-technical@bio-techne.com
Orders: nb-customerservice@bio-techne.com
General: novus@novusbio.com

Products Related to NBP2-01312

HAF007	Goat anti-Mouse IgG Secondary Antibody [HRP]
NB720-B	Rabbit anti-Mouse IgG (H+L) Secondary Antibody [Biotin]
NBP1-97005-0.5mg	Mouse IgG1 Isotype Control (MG1)
NBP2-57225PEP	SERPINB13 Recombinant Protein Antigen

Limitations

This product is for research use only and is not approved for use in humans or in clinical diagnosis. Primary Antibodies are guaranteed for 1 year from date of receipt.

For more information on our 100% guarantee, please visit www.novusbio.com/guarantee

Earn gift cards/discounts by submitting a review: www.novusbio.com/reviews/submit/NBP2-01312

Earn gift cards/discounts by submitting a publication using this product:
www.novusbio.com/publications

