

Product Datasheet

CCM2 Antibody (OTI3B7) NBP2-01115

Unit Size: 0.1 ml

Store at -20C. Avoid freeze-thaw cycles.

www.novusbio.com



technical@novusbio.com

Protocols, Publications, Related Products, Reviews, Research Tools and Images at:
www.novusbio.com/NBP2-01115

Updated 9/6/2018 v.20.1

Earn rewards for product
reviews and publications.

Submit a publication at www.novusbio.com/publications

Submit a review at www.novusbio.com/reviews/destination/NBP2-01115



NBP2-01115

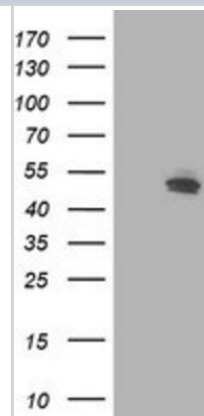
CCM2 Antibody (OTI3B7)

| Product Information | |
|-----------------------------|---|
| Unit Size | 0.1 ml |
| Concentration | Please see the vial label for concentration. If unlisted please contact technical services. |
| Storage | Store at -20C. Avoid freeze-thaw cycles. |
| Clonality | Monoclonal |
| Clone | OTI3B7 |
| Preservative | 0.02% Sodium Azide |
| Isotype | IgG1 |
| Purity | Immunogen affinity purified |
| Buffer | PBS (pH 7.3), 1.0% BSA and 50% Glycerol |
| Target Molecular Weight | 48.7 kDa |
| Product Description | |
| Host | Mouse |
| Gene ID | 83605 |
| Gene Symbol | CCM2 |
| Species | Human |
| Reactivity Notes | Human |
| Immunogen | Full length recombinant protein of human CCM2 (NP_113631) produced in HEK293T cells. |
| Product Application Details | |
| Applications | Western Blot, Immunocytochemistry/Immunofluorescence |
| Recommended Dilutions | Western Blot 1:2000, Immunocytochemistry/Immunofluorescence 1:100 |

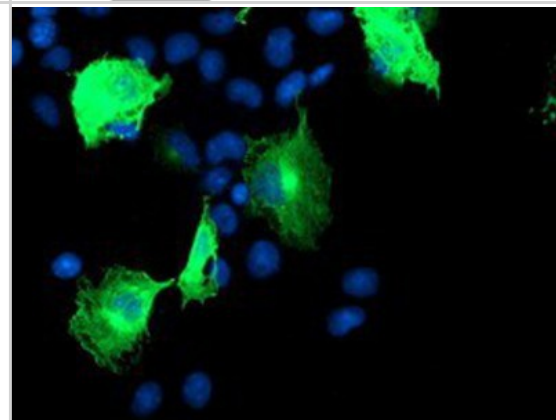


Images

Western Blot: CCM2 Antibody (3B7) [NBP2-01115] - HEK293T cells were transfected with the pCMV6-ENTRY control (Left lane) or pCMV6-ENTRY CCM2 (Right lane) cDNA for 48 hrs and lysed. Equivalent amounts of cell lysates (5 ug per lane) were separated by SDS-PAGE and immunoblotted with anti-CCM2.



Immunocytochemistry/Immunofluorescence: CCM2 Antibody (3B7) [NBP2-01115] Staining of COS7 cells transiently transfected by pCMV6-ENTRY CCM2.





Novus Biologicals USA

10730 E. Briarwood Avenue
Centennial, CO 80112
USA

Phone: 303.730.1950
Toll Free: 1.888.506.6887
Fax: 303.730.1966
novus@novusbio.com

Novus Biologicals Canada

461 North Service Road West, Unit B37
Oakville, ON L6M 2V5
Canada

Phone: 905.827.6400
Toll Free: 855.668.8722
Fax: 905.827.6402
canada@novusbio.com

Novus Biologicals Europe

19 Barton Lane
Abingdon Science Park
Abingdon, OX14 3NB, United Kingdom
Phone: (44) (0) 1235 529449
Free Phone: 0800 37 34 15
Fax: (44) (0) 1235 533420
info@bio-techne.com

General Contact Information

www.novusbio.com
Technical Support: technical@novusbio.com
Orders: orders@novusbio.com
General: novus@novusbio.com

Limitations

This product is for research use only and is not approved for use in humans or in clinical diagnosis. Primary Antibodies are guaranteed for 1 year from date of receipt.

For more information on our 100% guarantee, please visit www.novusbio.com/guarantee

Earn gift cards/discounts by submitting a review: www.novusbio.com/reviews/submit/NBP2-01115

Earn gift cards/discounts by submitting a publication using this product:
www.novusbio.com/publications

