

# Product Datasheet

## Tubulin Beta 4 Antibody (OTI8E3) NBP2-00908

Unit Size: 0.1 ml

Store at -20C. Avoid freeze-thaw cycles.

[www.novusbio.com](http://www.novusbio.com)



[technical@novusbio.com](mailto:technical@novusbio.com)

Protocols, Publications, Related Products, Reviews, Research Tools and Images at:  
[www.novusbio.com/NBP2-00908](http://www.novusbio.com/NBP2-00908)

Updated 9/6/2018 v.20.1

Earn rewards for product  
reviews and publications.

Submit a publication at [www.novusbio.com/publications](http://www.novusbio.com/publications)

Submit a review at [www.novusbio.com/reviews/destination/NBP2-00908](http://www.novusbio.com/reviews/destination/NBP2-00908)



**NBP2-00908**

Tubulin Beta 4 Antibody (OTI8E3)

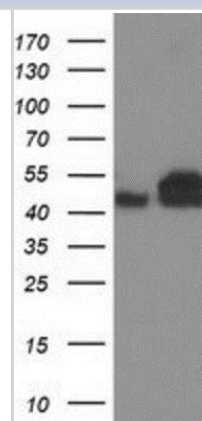
Product Information	
Unit Size	0.1 ml
Concentration	Please see the vial label for concentration. If unlisted please contact technical services.
Storage	Store at -20C. Avoid freeze-thaw cycles.
Clonality	Monoclonal
Clone	OTI8E3
Preservative	0.02% Sodium Azide
Isotype	IgG2a
Purity	Immunogen affinity purified
Buffer	PBS (pH 7.3), 1.0% BSA and 50% Glycerol
Target Molecular Weight	49.4 kDa

Product Description	
Host	Mouse
Gene ID	10382
Gene Symbol	TUBB4A
Species	Human, Monkey, Primate
Reactivity Notes	Human, Monkey
Immunogen	Full length recombinant protein of human Tubulin Beta 4 (NP_006078) produced in HEK293T cells.

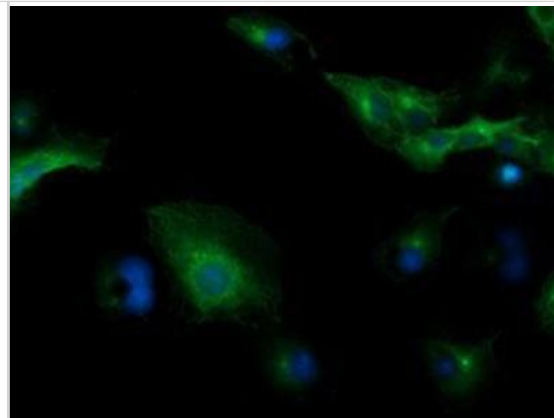
Product Application Details	
Applications	Western Blot, Flow Cytometry, Immunocytochemistry/Immunofluorescence
Recommended Dilutions	Western Blot 1:500-2000, Flow Cytometry 1:100, Immunocytochemistry/Immunofluorescence 1:100

**Images**

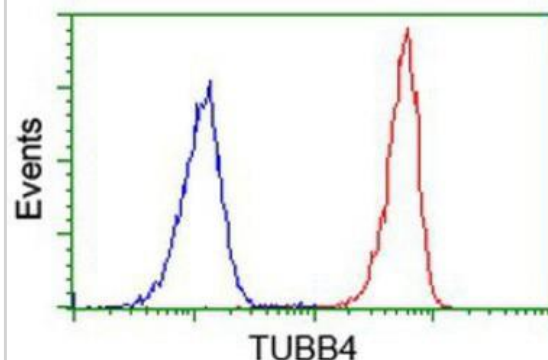
Western Blot: Tubulin Beta 4 Antibody (8E3) [NBP2-00908] - HEK293T cells were transfected with the pCMV6-ENTRY control (Left lane) or pCMV6-ENTRY Tubulin Beta 4 (Right lane) cDNA for 48 hrs and lysed. Equivalent amounts of cell lysates (5 ug per lane) were separated by SDS-PAGE and immunoblotted with anti-Tubulin Beta 4.



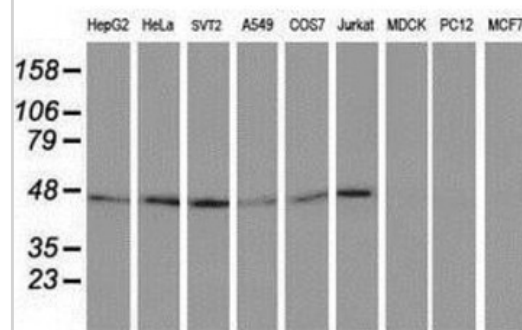
Immunocytochemistry/Immunofluorescence: Tubulin Beta 4 Antibody (8E3) [NBP2-00908] - Staining of COS7 cells transiently transfected by pCMV6-ENTRY Tubulin Beta 4.



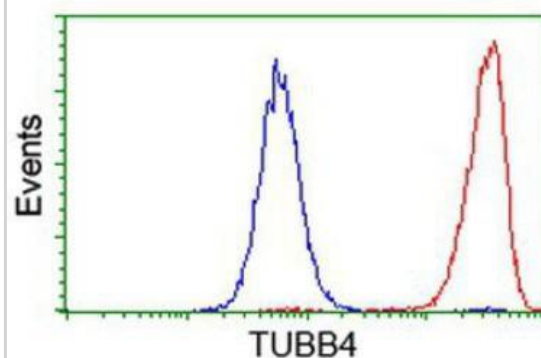
Flow Cytometry: Tubulin Beta 4 Antibody (8E3) [NBP2-00908] - Analysis of Jurkat cells, using anti-Tubulin Beta 4 antibody, (Red), compared to a nonspecific negative control antibody (Blue).



Western Blot: Tubulin Beta 4 Antibody (8E3) [NBP2-00908] Analysis of extracts (35ug) from 9 different cell lines by using anti-Tubulin Beta 4 monoclonal antibody.



Flow Cytometry: Tubulin Beta 4 Antibody (8E3) [NBP2-00908] - Analysis of Hela cells, using anti-Tubulin Beta 4 antibody, (Red), compared to a nonspecific negative control antibody (Blue).





### **Novus Biologicals USA**

10730 E. Briarwood Avenue  
Centennial, CO 80112  
USA

Phone: 303.730.1950  
Toll Free: 1.888.506.6887  
Fax: 303.730.1966  
novus@novusbio.com

### **Novus Biologicals Canada**

461 North Service Road West, Unit B37  
Oakville, ON L6M 2V5  
Canada

Phone: 905.827.6400  
Toll Free: 855.668.8722  
Fax: 905.827.6402  
canada@novusbio.com

### **Novus Biologicals Europe**

19 Barton Lane  
Abingdon Science Park  
Abingdon, OX14 3NB, United Kingdom  
Phone: (44) (0) 1235 529449  
Free Phone: 0800 37 34 15  
Fax: (44) (0) 1235 533420  
info@bio-techne.com

### **General Contact Information**

www.novusbio.com  
Technical Support: technical@novusbio.com  
Orders: orders@novusbio.com  
General: novus@novusbio.com

### **Limitations**

This product is for research use only and is not approved for use in humans or in clinical diagnosis. Primary Antibodies are guaranteed for 1 year from date of receipt.

For more information on our 100% guarantee, please visit [www.novusbio.com/guarantee](http://www.novusbio.com/guarantee)

Earn gift cards/discounts by submitting a review: [www.novusbio.com/reviews/submit/NBP2-00908](http://www.novusbio.com/reviews/submit/NBP2-00908)

Earn gift cards/discounts by submitting a publication using this product:  
[www.novusbio.com/publications](http://www.novusbio.com/publications)

