

Product Datasheet

EB2 Antibody (OTI4G1) NBP2-00759

Unit Size: 0.1 ml

Store at -20C. Avoid freeze-thaw cycles.

www.novusbio.com



technical@novusbio.com

Protocols, Publications, Related Products, Reviews, Research Tools and Images at:
www.novusbio.com/NBP2-00759

Updated 9/6/2018 v.20.1

Earn rewards for product
reviews and publications.

Submit a publication at www.novusbio.com/publications

Submit a review at www.novusbio.com/reviews/destination/NBP2-00759



NBP2-00759

EB2 Antibody (OTI4G1)

Product Information

Unit Size	0.1 ml
Concentration	Please see the vial label for concentration. If unlisted please contact technical services.
Storage	Store at -20C. Avoid freeze-thaw cycles.
Clonality	Monoclonal
Clone	OTI4G1
Preservative	0.02% Sodium Azide
Isotype	IgG1
Purity	Immunogen affinity purified
Buffer	PBS (pH 7.3), 1.0% BSA and 50% Glycerol
Target Molecular Weight	36.9 kDa

Product Description

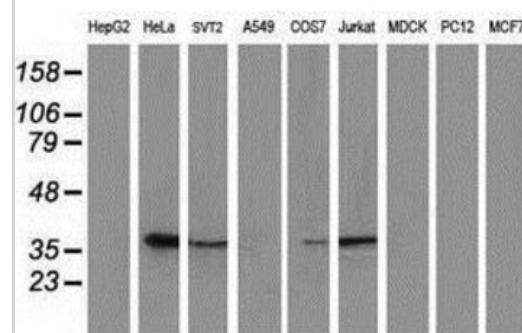
Host	Mouse
Gene ID	10982
Gene Symbol	MAPRE2
Species	Human, Primate
Reactivity Notes	Human, Monkey
Immunogen	Full length recombinant protein of human EB2 (NP_055083) produced in HEK293T cells.

Product Application Details

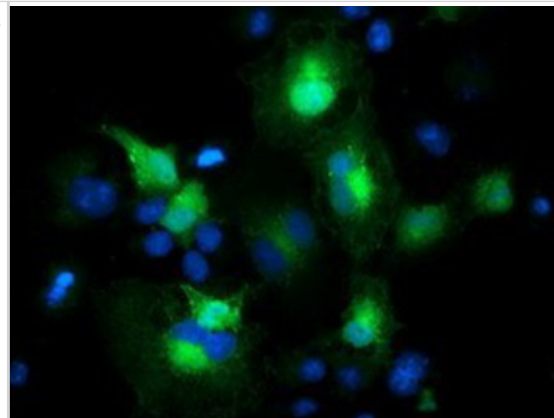
Applications	Western Blot, Flow Cytometry, Immunocytochemistry/Immunofluorescence
Recommended Dilutions	Western Blot 1:500-2000, Flow Cytometry 1:100, Immunocytochemistry/Immunofluorescence 1:100

Images

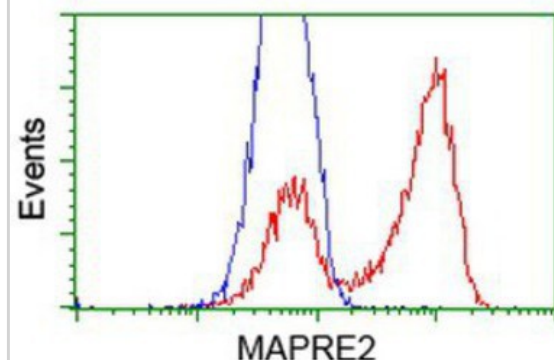
Western Blot: EB2 Antibody (4G1) [NBP2-00759] Analysis of extracts (35ug) from 9 different cell lines by using anti-EB2 monoclonal antibody.



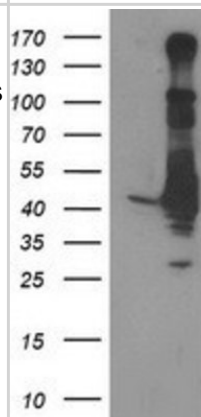
Immunocytochemistry/Immunofluorescence: EB2 Antibody (4G1) [NBP2-00759] - Staining of COS7 cells transiently transfected by pCMV6-ENTRY EB2.



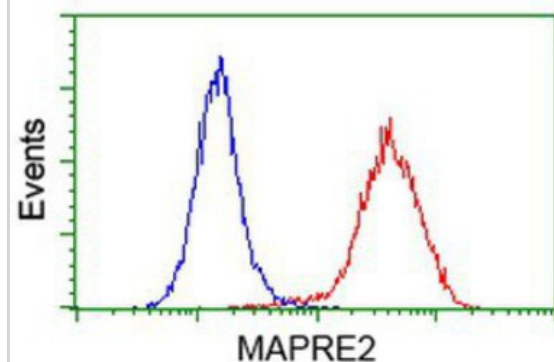
Flow Cytometry: EB2 Antibody (4G1) [NBP2-00759] - HEK293T cells transfected with either overexpression plasmid (Red) or empty vector control plasmid (Blue) were immunostained by anti-EB2 antibody, and then analyzed by flow cytometry.



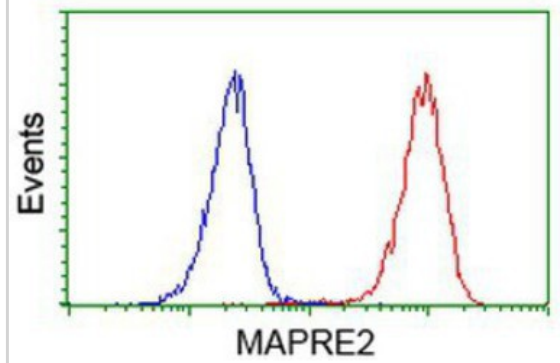
Western Blot: EB2 Antibody (4G1) [NBP2-00759] - HEK293T cells were transfected with the pCMV6-ENTRY control (Left lane) or pCMV6-ENTRY EB2 (Right lane) cDNA for 48 hrs and lysed. Equivalent amounts of cell lysates (5 ug per lane) were separated by SDS-PAGE and immunoblotted with anti-EB2.



Flow Cytometry: EB2 Antibody (4G1) [NBP2-00759] - Analysis of Hela cells, using anti-EB2 antibody, (Red), compared to a nonspecific negative control antibody (Blue).



Flow Cytometry: EB2 Antibody (4G1) [NBP2-00759] - Analysis of Jurkat cells, using anti-EB2 antibody, (Red), compared to a nonspecific negative control antibody (Blue).





Novus Biologicals USA

10730 E. Briarwood Avenue
Centennial, CO 80112
USA
Phone: 303.730.1950
Toll Free: 1.888.506.6887
Fax: 303.730.1966
novus@novusbio.com

Novus Biologicals Canada

461 North Service Road West, Unit B37
Oakville, ON L6M 2V5
Canada
Phone: 905.827.6400
Toll Free: 855.668.8722
Fax: 905.827.6402
canada@novusbio.com

Novus Biologicals Europe

19 Barton Lane
Abingdon Science Park
Abingdon, OX14 3NB, United Kingdom
Phone: (44) (0) 1235 529449
Free Phone: 0800 37 34 15
Fax: (44) (0) 1235 533420
info@bio-techne.com

General Contact Information

www.novusbio.com
Technical Support: technical@novusbio.com
Orders: orders@novusbio.com
General: novus@novusbio.com

Limitations

This product is for research use only and is not approved for use in humans or in clinical diagnosis. Primary Antibodies are guaranteed for 1 year from date of receipt.

For more information on our 100% guarantee, please visit www.novusbio.com/guarantee

Earn gift cards/discounts by submitting a review: www.novusbio.com/reviews/submit/NBP2-00759

Earn gift cards/discounts by submitting a publication using this product:
www.novusbio.com/publications

