

Product Datasheet

SSX1 Antibody (OTI1E10) NBP2-00614

Unit Size: 0.1 ml

Store at -20C. Avoid freeze-thaw cycles.

www.novusbio.com



technical@novusbio.com

Publications: 1

Protocols, Publications, Related Products, Reviews, Research Tools and Images at:
www.novusbio.com/NBP2-00614

Updated 10/23/2024 v.20.1

Earn rewards for product
reviews and publications.

Submit a publication at www.novusbio.com/publications

Submit a review at www.novusbio.com/reviews/destination/NBP2-00614



NBP2-00614

SSX1 Antibody (OT11E10)

Product Information

Unit Size	0.1 ml
Concentration	0.64 mg/ml
Storage	Store at -20C. Avoid freeze-thaw cycles.
Clonality	Monoclonal
Clone	OT11E10
Preservative	0.02% Sodium Azide
Isotype	IgG1
Purity	Immunogen affinity purified
Buffer	PBS (pH 7.3), 1.0% BSA and 50% Glycerol
Target Molecular Weight	21.8 kDa

Product Description

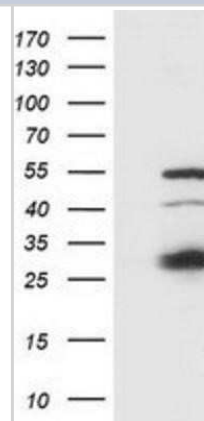
Host	Mouse
Gene ID	6756
Gene Symbol	SSX1
Species	Human
Immunogen	Full length human recombinant protein of human SSX1 (NP_005626) produced in E.coli.

Product Application Details

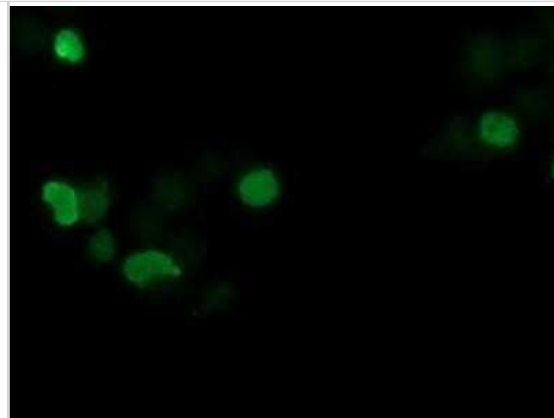
Applications	Western Blot, Flow Cytometry, Immunocytochemistry/ Immunofluorescence, Immunohistochemistry, Immunohistochemistry-Paraffin
Recommended Dilutions	Western Blot 1:500-2000, Flow Cytometry 1:100, Immunohistochemistry 1:150, Immunocytochemistry/ Immunofluorescence 1:100, Immunohistochemistry-Paraffin 1:150

Images

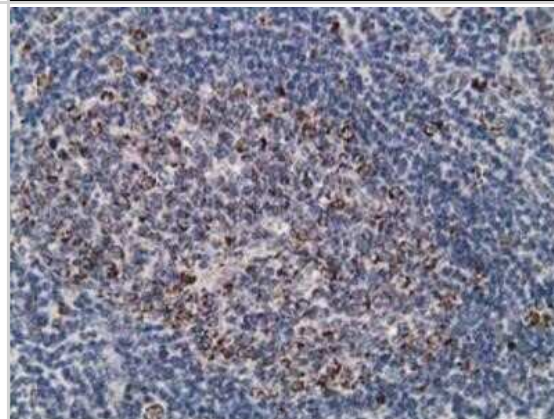
Western Blot: SSX1 Antibody (OT11E10) [NBP2-00614] - HEK293T cells were transfected with the pCMV6-ENTRY control (Left lane) or pCMV6-ENTRY SSX1 (Right lane) cDNA for 48 hrs and lysed. Equivalent amounts of cell lysates (5 ug per lane) were separated by SDS-PAGE and immunoblotted with anti-SSX1.



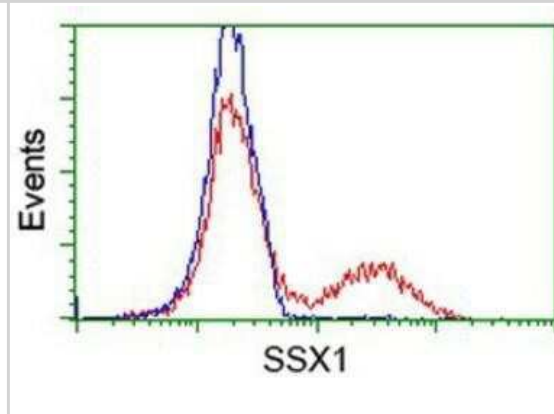
Immunocytochemistry/Immunofluorescence: SSX1 Antibody (OTI1E10) [NBP2-00614] - Staining of COS7 cells transiently transfected by pCMV6-ENTRY SSX1.



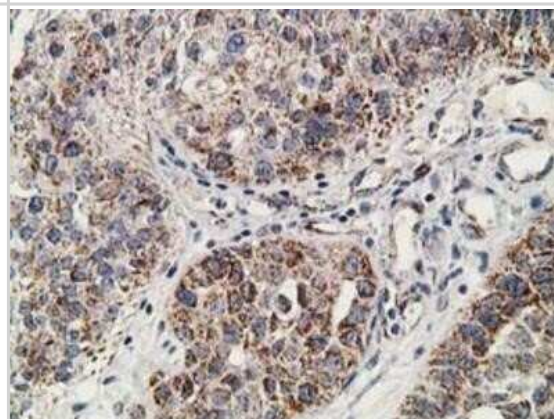
Immunohistochemistry-Paraffin: SSX1 Antibody (OTI1E10) [NBP2-00614] - Staining of paraffin-embedded Human lymph node tissue using anti-SSX1 mouse monoclonal antibody.



Flow Cytometry: SSX1 Antibody (OTI1E10) [NBP2-00614] - HEK293T cells transfected with either overexpression plasmid (Red) or empty vector control plasmid (Blue) were immunostained by anti-SSX1 antibody, and then analyzed by flow cytometry.



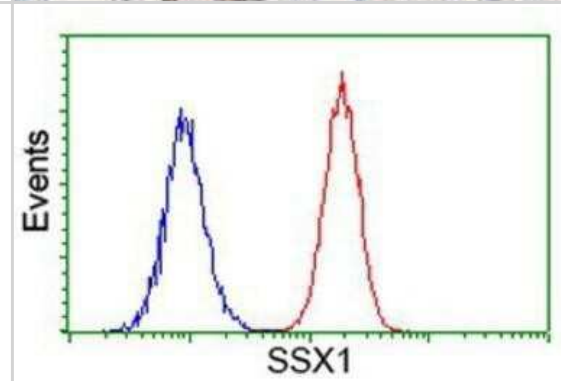
Immunohistochemistry-Paraffin: SSX1 Antibody (OTI1E10) [NBP2-00614] - Staining of paraffin-embedded Carcinoma of Human bladder tissue using anti-SSX1 mouse monoclonal antibody.



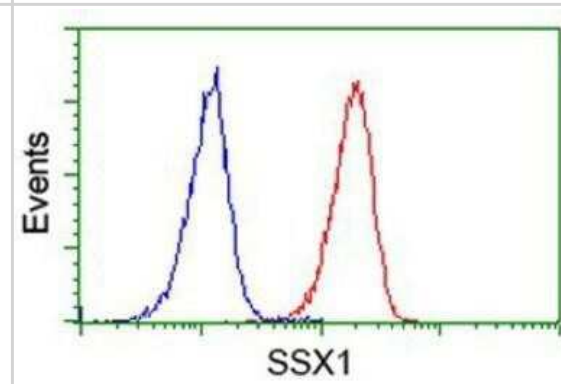
Immunohistochemistry-Paraffin: SSX1 Antibody (OTI1E10) [NBP2-00614] - Staining of paraffin-embedded Human Kidney tissue using anti-SSX1 mouse monoclonal antibody.



Flow Cytometry: SSX1 Antibody (OTI1E10) [NBP2-00614] - Analysis of Hela cells, using anti-SSX1 antibody, (Red), compared to a nonspecific negative control antibody (Blue).



Flow Cytometry: SSX1 Antibody (OTI1E10) [NBP2-00614] - Analysis of Jurkat cells, using anti-SSX1 antibody, (Red), compared to a nonspecific negative control antibody (Blue).



Publications

Shen JZ, Qiu Z, Wu Q et al. FBXO44 promotes DNA replication-coupled repetitive element silencing in cancer cells Cell 2020-12-18 [PMID: 33357448] (IF/IHC, ICC/IF, Human)



Novus Biologicals USA

10730 E. Briarwood Avenue
Centennial, CO 80112
USA
Phone: 303.730.1950
Toll Free: 1.888.506.6887
Fax: 303.730.1966
nb-customerservice@bio-techne.com

Bio-Techne Canada

21 Canmotor Ave
Toronto, ON M8Z 4E6
Canada
Phone: 905.827.6400
Toll Free: 855.668.8722
Fax: 905.827.6402
canada.inquires@bio-techne.com

Bio-Techne Ltd

19 Barton Lane
Abingdon Science Park
Abingdon, OX14 3NB, United Kingdom
Phone: (44) (0) 1235 529449
Free Phone: 0800 37 34 15
Fax: (44) (0) 1235 533420
info.EMEA@bio-techne.com

General Contact Information

www.novusbio.com
Technical Support: nb-technical@bio-techne.com
Orders: nb-customerservice@bio-techne.com
General: novus@novusbio.com

Products Related to NBP2-00614

HAF007	Goat anti-Mouse IgG Secondary Antibody [HRP]
NB720-B	Rabbit anti-Mouse IgG (H+L) Secondary Antibody [Biotin]
NBP1-97005-0.5mg	Mouse IgG1 Isotype Control (MG1)
NBP2-22841	Recombinant Human SSX1 His Protein

Limitations

This product is for research use only and is not approved for use in humans or in clinical diagnosis. Primary Antibodies are guaranteed for 1 year from date of receipt.

For more information on our 100% guarantee, please visit www.novusbio.com/guarantee

Earn gift cards/discounts by submitting a review: www.novusbio.com/reviews/submit/NBP2-00614

Earn gift cards/discounts by submitting a publication using this product:
www.novusbio.com/publications

