

# Product Datasheet

## PON1 Antibody (OTI1F7) NBP2-00530

Unit Size: 0.1 ml

Store at -20C. Avoid freeze-thaw cycles.

[www.novusbio.com](http://www.novusbio.com)



[technical@novusbio.com](mailto:technical@novusbio.com)

Protocols, Publications, Related Products, Reviews, Research Tools and Images at:  
[www.novusbio.com/NBP2-00530](http://www.novusbio.com/NBP2-00530)

Updated 9/6/2018 v.20.1

Earn rewards for product  
reviews and publications.

Submit a publication at [www.novusbio.com/publications](http://www.novusbio.com/publications)

Submit a review at [www.novusbio.com/reviews/destination/NBP2-00530](http://www.novusbio.com/reviews/destination/NBP2-00530)



**NBP2-00530**

PON1 Antibody (OT11F7)

**Product Information**

|                                |   |
|--------------------------------|---|
| <b>Unit Size</b>               | 0.1 ml  |
| <b>Concentration</b>           | Please see the vial label for concentration. If unlisted please contact technical services. |
| <b>Storage</b>                 | Store at -20C. Avoid freeze-thaw cycles.  |
| <b>Clonality</b>               | Monoclonal  |
| <b>Clone</b>                   | OT11F7  |
| <b>Preservative</b>            | 0.02% Sodium Azide  |
| <b>Isotype</b>                 | IgG2b   |
| <b>Purity</b>                  | Immunogen affinity purified   |
| <b>Buffer</b>                  | PBS (pH 7.3), 1.0% BSA and 50% Glycerol   |
| <b>Target Molecular Weight</b> | 39.6 kDa  |

**Product Description**

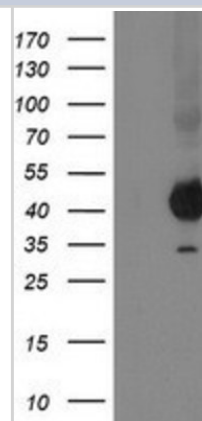
|                         |  |
|-------------------------|--|
| <b>Host</b>             | Mouse  |
| <b>Gene ID</b>          | 5444   |
| <b>Gene Symbol</b>      | PON1   |
| <b>Species</b>          | Human  |
| <b>Reactivity Notes</b> | Human  |
| <b>Immunogen</b>        | Full length recombinant protein of human PON1 (NP_000437) produced in HEK293T cells. |

**Product Application Details**

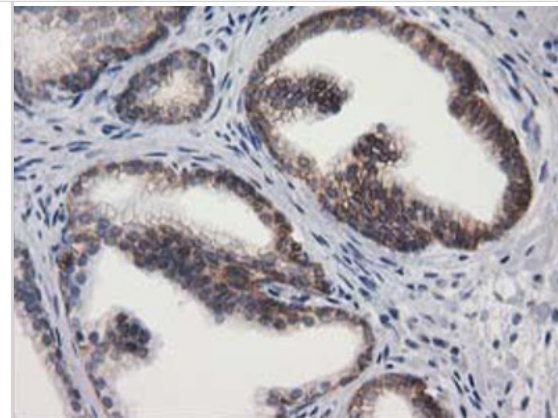
|                              |   |
|------------------------------|---|
| <b>Applications</b>          | Western Blot, Flow Cytometry, Immunohistochemistry, Immunohistochemistry-Paraffin                               |
| <b>Recommended Dilutions</b> | Western Blot 1:2000, Flow Cytometry 1:100, Immunohistochemistry 1:10-1:500, Immunohistochemistry-Paraffin 1:150 |

**Images**

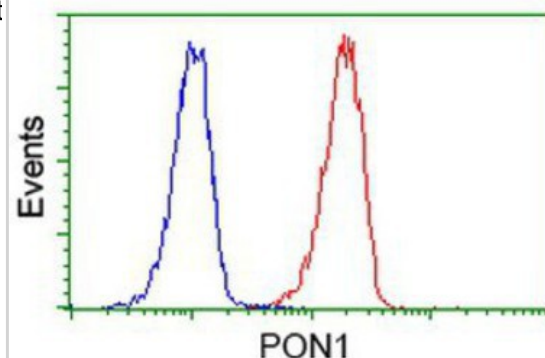
Western Blot: PON1 Antibody (1F7) [NBP2-00530] - HEK293T cells were transfected with the pCMV6-ENTRY control (Left lane) or pCMV6-ENTRY PON1 (Right lane) cDNA for 48 hrs and lysed. Equivalent amounts of cell lysates (5 ug per lane) were separated by SDS-PAGE and immunoblotted with anti-PON1.



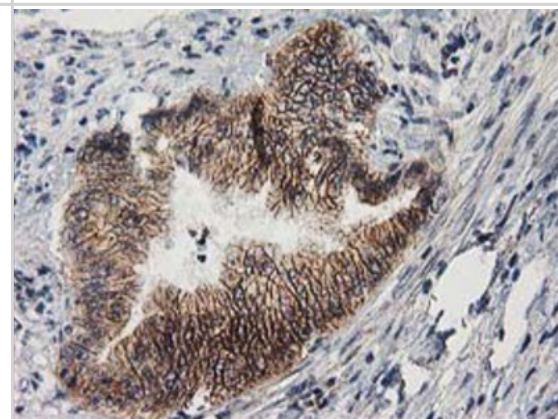
Immunohistochemistry-Paraffin: PON1 Antibody (1F7) [NBP2-00530]  
Staining of paraffin-embedded Human prostate tissue using anti-PON1 mouse monoclonal antibody.



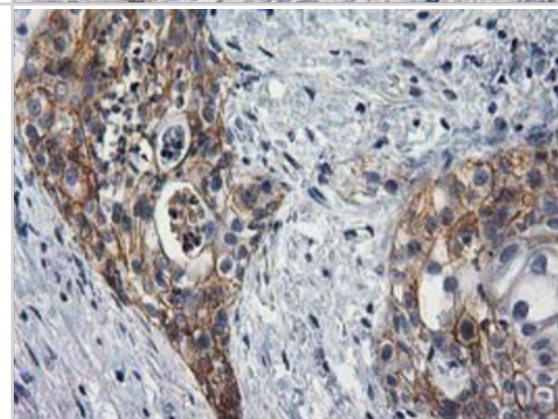
Flow Cytometry: PON1 Antibody (1F7) [NBP2-00530] - Analysis of Jurkat cells, using anti-PON1 antibody, (Red), compared to a nonspecific negative control antibody (Blue).



Immunohistochemistry-Paraffin: PON1 Antibody (1F7) [NBP2-00530] -  
Staining of paraffin-embedded Adenocarcinoma of Human colon tissue  
using anti-PON1 mouse monoclonal antibody.

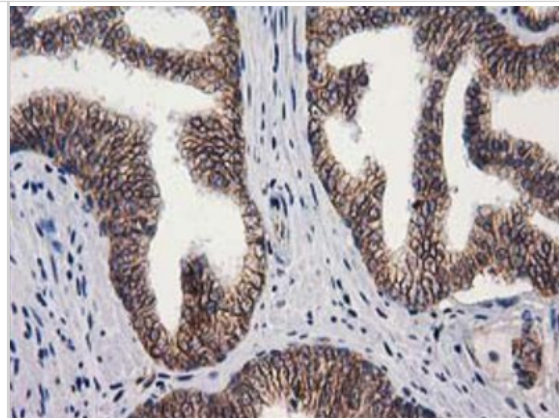


Immunohistochemistry-Paraffin: PON1 Antibody (1F7) [NBP2-00530] -  
Staining of paraffin-embedded Carcinoma of Human pancreas tissue  
using anti-PON1 mouse monoclonal antibody.

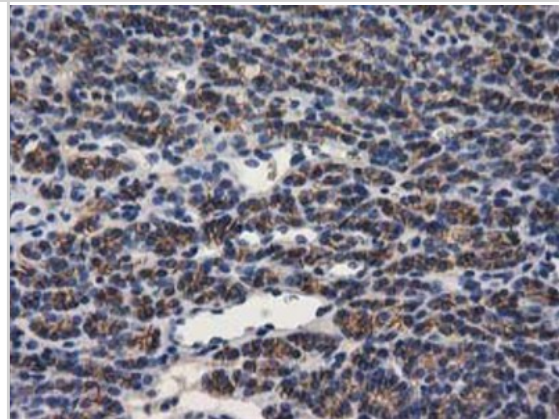




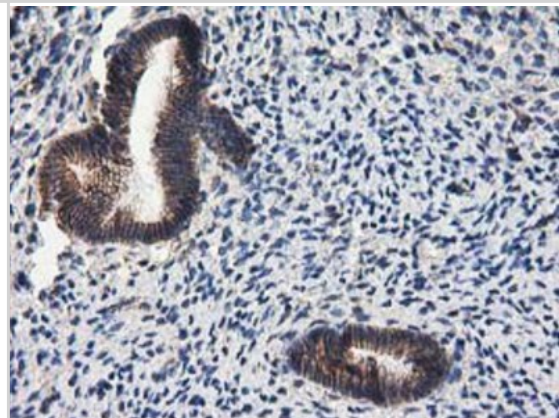
Immunohistochemistry-Paraffin: PON1 Antibody (1F7) [NBP2-00530] - Staining of paraffin-embedded Carcinoma of Human prostate tissue using anti-PON1 mouse monoclonal antibody.



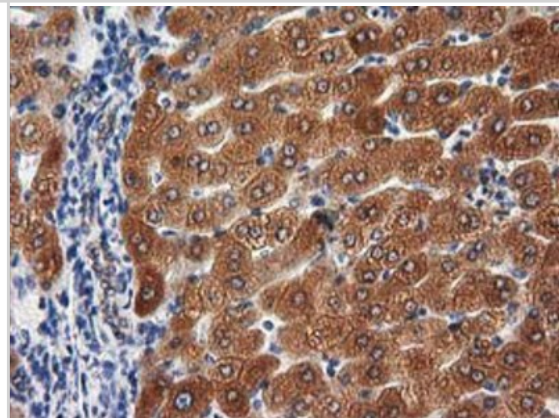
Immunohistochemistry-Paraffin: PON1 Antibody (1F7) [NBP2-00530] - Staining of paraffin-embedded Carcinoma of Human thyroid tissue using anti-PON1 mouse monoclonal antibody.



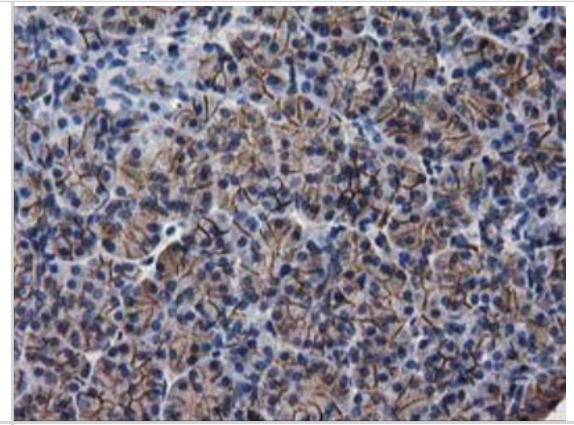
Immunohistochemistry-Paraffin: PON1 Antibody (1F7) [NBP2-00530] - Staining of paraffin-embedded Human endometrium tissue using anti-PON1 mouse monoclonal antibody.



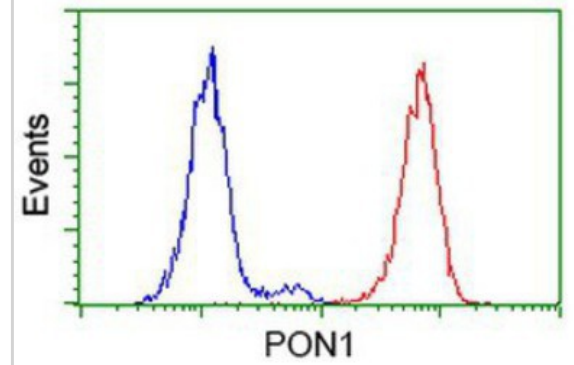
Immunohistochemistry-Paraffin: PON1 Antibody (1F7) [NBP2-00530] - Staining of paraffin-embedded Human liver tissue using anti-PON1 mouse monoclonal antibody.



Immunohistochemistry-Paraffin: PON1 Antibody (1F7) [NBP2-00530] - Staining of paraffin-embedded Human pancreas tissue using anti-PON1 mouse monoclonal antibody.



Flow Cytometry: PON1 Antibody (1F7) [NBP2-00530] - Analysis of Hela cells, using anti-PON1 antibody, (Red), compared to a nonspecific negative control antibody (Blue).





### **Novus Biologicals USA**

10730 E. Briarwood Avenue  
Centennial, CO 80112  
USA  
Phone: 303.730.1950  
Toll Free: 1.888.506.6887  
Fax: 303.730.1966  
novus@novusbio.com

### **Novus Biologicals Canada**

461 North Service Road West, Unit B37  
Oakville, ON L6M 2V5  
Canada  
Phone: 905.827.6400  
Toll Free: 855.668.8722  
Fax: 905.827.6402  
canada@novusbio.com

### **Novus Biologicals Europe**

19 Barton Lane  
Abingdon Science Park  
Abingdon, OX14 3NB, United Kingdom  
Phone: (44) (0) 1235 529449  
Free Phone: 0800 37 34 15  
Fax: (44) (0) 1235 533420  
info@bio-techne.com

### **General Contact Information**

www.novusbio.com  
Technical Support: technical@novusbio.com  
Orders: orders@novusbio.com  
General: novus@novusbio.com

### **Limitations**

This product is for research use only and is not approved for use in humans or in clinical diagnosis. Primary Antibodies are guaranteed for 1 year from date of receipt.

For more information on our 100% guarantee, please visit [www.novusbio.com/guarantee](http://www.novusbio.com/guarantee)

Earn gift cards/discounts by submitting a review: [www.novusbio.com/reviews/submit/NBP2-00530](http://www.novusbio.com/reviews/submit/NBP2-00530)

Earn gift cards/discounts by submitting a publication using this product:  
[www.novusbio.com/publications](http://www.novusbio.com/publications)

