

# Product Datasheet

## IL-3R alpha/CD123 Antibody (6H6) [PE/Cy7] NBP2-00467-100 Tests

Unit Size: 100 Tests

Store at 4C in the dark.

[www.novusbio.com](http://www.novusbio.com)



[technical@novusbio.com](mailto:technical@novusbio.com)

**Reviews: 1**

Protocols, Publications, Related Products, Reviews, Research Tools and Images at:  
[www.novusbio.com/NBP2-00467](http://www.novusbio.com/NBP2-00467)

Updated 5/15/2025 v.20.1

Earn rewards for product  
reviews and publications.

Submit a publication at [www.novusbio.com/publications](http://www.novusbio.com/publications)

Submit a review at [www.novusbio.com/reviews/destination/NBP2-00467](http://www.novusbio.com/reviews/destination/NBP2-00467)



**NBP2-00467-100 Tests**

IL-3R alpha/CD123 Antibody (6H6) [PE/Cy7]

Product Information	
Unit Size	100 Tests
Concentration	5 mg/ml
Storage	Store at 4C in the dark.
Clonality	Monoclonal
Clone	6H6
Preservative	0.09% Sodium Azide
Isotype	IgG1 Kappa
Conjugate	PE/Cy7
Purity	Protein A or G purified
Buffer	PBS (pH 7.2) with 0.1% gelatin and 0.2% BSA

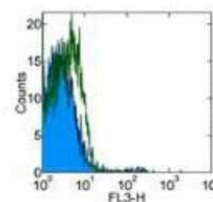
Product Description	
Host	Mouse
Gene ID	3563
Gene Symbol	IL3RA
Species	Human
Specificity/Sensitivity	IL3RA (6H6)
Immunogen	Tissue / cell preparation. IL3R transfected COS cells.

Product Application Details	
Applications	Flow Cytometry
Recommended Dilutions	Flow Cytometry 1:10-1:1000
Application Notes	Flow Cytometry Use 1ug for 10 <sup>6</sup> cells in 100 ul volume or 100 ul of whole blood. This antibody has been tested by immunofluorescent staining with flow cytometric analysis. IHC-Fr: Use at an assay dependent dilution. WB: Use at an assay dependent dilution. Detects a band of approximately 70 kDa. Not tested in other applications. Optimal dilutions/concentrations should be determined by the end user. Although not tested this antibody may be useful in IHC-P and Immunoprecipitation.

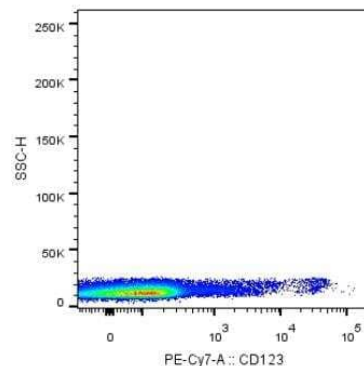


## Images

Flow Cytometry: IL-3 R alpha/CD123 Antibody (6H6) [PE/Cy7] [NBP2-00467] - Staining of normal human peripheral blood cells with Mouse IgG1 kappa Isotype Control PE-Cy7 (NBP1-42944) (open histogram) or Anti-Human CD123 PE-Cy7 (filled histogram). Cells in the lymphocyte gate were used for analysis.



Flow Cytometry: IL-3 R alpha/CD123 Antibody (6H6) [PE/Cy7] [NBP2-00467] - Human buffy coat. Image verified by customer.





### **Novus Biologicals USA**

10730 E. Briarwood Avenue  
Centennial, CO 80112  
USA  
Phone: 303.730.1950  
Toll Free: 1.888.506.6887  
Fax: 303.730.1966  
nb-customerservice@bio-techne.com

### **Bio-Techne Canada**

21 Canmotor Ave  
Toronto, ON M8Z 4E6  
Canada  
Phone: 905.827.6400  
Toll Free: 855.668.8722  
Fax: 905.827.6402  
canada.inquires@bio-techne.com

### **Bio-Techne Ltd**

19 Barton Lane  
Abingdon Science Park  
Abingdon, OX14 3NB, United Kingdom  
Phone: (44) (0) 1235 529449  
Free Phone: 0800 37 34 15  
Fax: (44) (0) 1235 533420  
info.EMEA@bio-techne.com

### **General Contact Information**

www.novusbio.com  
Technical Support: nb-technical@bio-  
techne.com  
Orders: nb-customerservice@bio-techne.com  
General: novus@novusbio.com

### **Limitations**

This product is for research use only and is not approved for use in humans or in clinical diagnosis. Primary Antibodies are guaranteed for 1 year from date of receipt.

For more information on our 100% guarantee, please visit [www.novusbio.com/guarantee](http://www.novusbio.com/guarantee)

Earn gift cards/discounts by submitting a review: [www.novusbio.com/reviews/submit/NBP2-00467](http://www.novusbio.com/reviews/submit/NBP2-00467)

Earn gift cards/discounts by submitting a publication using this product:  
[www.novusbio.com/publications](http://www.novusbio.com/publications)

