

Product Datasheet

DO-11.10 T cell Receptor Antibody (KJ1-26) [FITC] NBP2-00133-100ug

Unit Size: 100 ug

Store at 4C in the dark.

www.novusbio.com



technical@novusbio.com

Protocols, Publications, Related Products, Reviews, Research Tools and Images at:
www.novusbio.com/NBP2-00133

Updated 4/19/2018 v.20.1

Earn rewards for product
reviews and publications.

Submit a publication at www.novusbio.com/publications

Submit a review at www.novusbio.com/reviews/destination/NBP2-00133



NBP2-00133-100ug

DO-11.10 T cell Receptor Antibody (KJ1-26) [FITC]

Product Information

Unit Size	100 ug
Concentration	0.5 mg/ml
Storage	Store at 4C in the dark.
Clonality	Monoclonal
Clone	KJ1-26
Preservative	0.09% Sodium Azide
Isotype	IgG2a
Conjugate	FITC
Purity	Protein A or G purified
Buffer	PBS (pH 7.2)

Product Description

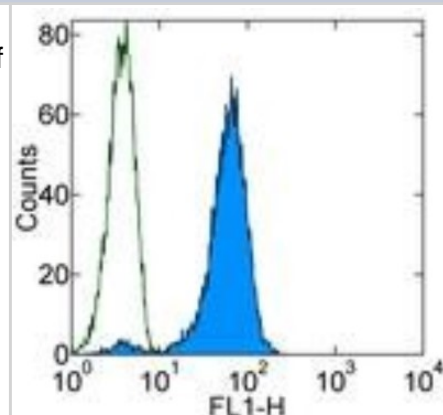
Host	Mouse
Species	Mouse
Reactivity Notes	Mouse. Please note that this antibody is reactive to Mouse and derived from the same host, Mouse. Additional Mouse on Mouse blocking steps may be required for IHC and ICC experiments. Please contact Technical Support for more information.
Immunogen	The immunogen for this antibody is DO-11.10 T cell Receptor.

Product Application Details

Applications	Flow Cytometry
Recommended Dilutions	Flow Cytometry 1:10-1:1000
Application Notes	This KJ1-26 (KJ126, KJI-26, KJI26) antibody has been tested by flow cytometric analysis of the DO11.10 T cell hybridoma. This can be used at less than or equal to 0.25 ug per test. A test is defined as the amount (ug) of antibody that will stain a cell sample in a final volume of 100 uL. Cell number should be determined empirically but can range from 10 ⁵ to 10 ⁸ cells/test. This KJ1-26 (KJ126, KJI-26, KJI26) antibody has also been reported for use in immunoprecipitation. It is recommended that the antibody be carefully titrated for optimal performance in the assay of interest.

Images

Flow Cytometry: DO-11.10 T cell Receptor Antibody (KJ1-26) [FITC] [NBP2-00133] - Staining of the DO11.10 T cell hybridoma with 0.06 ug of Mouse IgG2a K Isotype Control FITC (open histogram) or Anti-Mouse DO11.10 TCR FITC (filled histogram). Total viable cells were used for analysis.





Novus Biologicals USA

10730 E. Briarwood Avenue
Centennial, CO 80112
USA
Phone: 303.730.1950
Toll Free: 1.888.506.6887
Fax: 303.730.1966
novus@novusbio.com

Novus Biologicals Canada

461 North Service Road West, Unit B37
Oakville, ON L6M 2V5
Canada
Phone: 905.827.6400
Toll Free: 855.668.8722
Fax: 905.827.6402
canada@novusbio.com

Novus Biologicals Europe

19 Barton Lane
Abingdon Science Park
Abingdon, OX14 3NB, United Kingdom
Phone: (44) (0) 1235 529449
Free Phone: 0800 37 34 15
Fax: (44) (0) 1235 533420
info@bio-techne.com

General Contact Information

www.novusbio.com
Technical Support: technical@novusbio.com
Orders: orders@novusbio.com
General: novus@novusbio.com

Limitations

This product is for research use only and is not approved for use in humans or in clinical diagnosis. Primary Antibodies are guaranteed for 1 year from date of receipt.

For more information on our 100% guarantee, please visit www.novusbio.com/guarantee

Earn gift cards/discounts by submitting a review: www.novusbio.com/reviews/submit/NBP2-00133

Earn gift cards/discounts by submitting a publication using this product:
www.novusbio.com/publications

