

Product Datasheet

Recombinant Human Complement Component C5aR1 Protein NBP1-99516

Unit Size: 0.02 mg

Store at -20 to -80C. Avoid freeze-thaw cycles.

www.novusbio.com



technical@novusbio.com

Protocols, Publications, Related Products, Reviews, Research Tools and Images at:
www.novusbio.com/NBP1-99516

Updated 3/13/2023 v.20.1

Earn rewards for product
reviews and publications.

Submit a publication at www.novusbio.com/publications

Submit a review at www.novusbio.com/reviews/destination/NBP1-99516



NBP1-99516

Recombinant Human Complement Component C5aR1 Protein

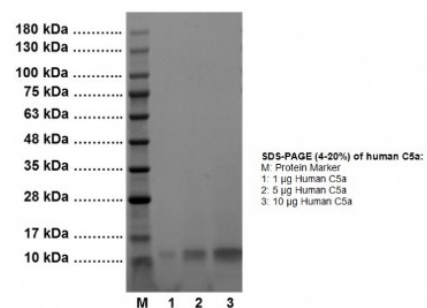
Product Information	
Unit Size	0.02 mg
Concentration	Lyoph
Storage	Store at -20 to -80C. Avoid freeze-thaw cycles.
Reconstitution Instructions	Reconstitute to 1.0 mg/ml in ice-cold H ₂ O containing 2.5 mg/ml BSA. The solution should be aliquoted and immediately stored at -70C for long-term storage.
Purity	>95%, by SDS-PAGE
Buffer	Lyophilized with no additives

Product Description	
Description	Recombinant bioactive protein containing 74 amino acids for Human Complement Component C5a R1 Source: <i>E. coli</i> Amino Acid Sequence: (P21730)
Gene ID	728
Gene Symbol	C5AR1
Species	Human
Details of Functionality	Human recombinant C5a is as active as that of serum derived C5a based on enzyme release assay of myeloperoxidase. The current lot of ED50 = 1.36 nmolar.
Endotoxin Note	<0.1 ng/ug

Product Application Details	
Applications	SDS-Page, Bioactivity
Recommended Dilutions	SDS-Page, Bioactivity

Images

SDS-Page: Recombinant Human Complement Component C5a R1 Protein [NBP1-99516]



SDS-PAGE (4-20%) of human C5a: 1, 5 and 10 µg of Recombinant human complement C5a loaded in each lane under reducing conditions and stained with Coomassie Blue. Recombinant human complement C5a has a predicted MW of ~11 kDa.



Novus Biologicals USA

10730 E. Briarwood Avenue
Centennial, CO 80112
USA

Phone: 303.730.1950
Toll Free: 1.888.506.6887
Fax: 303.730.1966
novus@novusbio.com

Bio-Techne Canada

21 Canmotor Ave
Toronto, ON M8Z 4E6
Canada

Phone: 905.827.6400
Toll Free: 855.668.8722
Fax: 905.827.6402
canada.inquires@bio-techne.com

Bio-Techne Ltd

19 Barton Lane
Abingdon Science Park
Abingdon, OX14 3NB, United Kingdom

Phone: (44) (0) 1235 529449
Free Phone: 0800 37 34 15
Fax: (44) (0) 1235 533420
info.EMEA@bio-techne.com

General Contact Information

www.novusbio.com
Technical Support: technical@novusbio.com
Orders: orders@novusbio.com
General: novus@novusbio.com

Limitations

This product is for research use only and is not approved for use in humans or in clinical diagnosis. This product is guaranteed for 1 year from date of receipt.

For more information on our 100% guarantee, please visit www.novusbio.com/guarantee

Earn gift cards/discounts by submitting a review: www.novusbio.com/reviews/submit/NBP1-99516

Earn gift cards/discounts by submitting a publication using this product:
www.novusbio.com/publications

