

Product Datasheet

Recombinant Human PKC mu GST (N-Term) Protein NBP1-99477

Unit Size: 0.005 mg

Store at -80C. Avoid freeze-thaw cycles.

www.novusbio.com



technical@novusbio.com

Protocols, Publications, Related Products, Reviews, Research Tools and Images at:
www.novusbio.com/NBP1-99477

Updated 4/29/2024 v.20.1

Earn rewards for product
reviews and publications.

Submit a publication at www.novusbio.com/publications

Submit a review at www.novusbio.com/reviews/destination/NBP1-99477



NBP1-99477**Recombinant Human PKC mu GST (N-Term) Protein**

Product Information	
Unit Size	0.005 mg
Concentration	0.1 mg/ml
Storage	Store at -80C. Avoid freeze-thaw cycles.
Purity	>90%, by SDS-PAGE
Buffer	50 mM Tris-HCl (pH 7.5), 150 mM NaCl, 0.25 mM DTT, 0.1 mM EGTA, 0.1 mM EDTA, 0.1 mM PMSF, 25% glycerol
Target Molecular Weight	131 kDa

Product Description	
Description	<p>Recombinant full length Human PKC mu containing N-terminal GST tag</p> <p>Source: <i>Baculovirus (Sf9 insect cells)</i> Amino Acid Sequence: UniProt Accession#: Q15139</p> <p>This product is manufactured by Abcam and distributed by Novus Biologicals. (Abcam Catalog Number: ab60873)</p>
Gene Symbol	PRKD1
Species	Human

Product Application Details	
Applications	SDS-Page, Bioactivity
Recommended Dilutions	SDS-Page, Bioactivity
Application Notes	<p>Activity assessment: PKC mu protein (~100 ng/ul concentration) was diluted to 20n g/ul with assay dilution buffer (4 mM MOPS, pH 7.2, 2.5 mM beta-glycerophosphate, 1 mM EGTA, 0.4 mM EDTA, 4 mM MgCl₂, 0.05 mM DTT), followed by 2-fold serial dilutions, and then the 10ul diluted proteins were used to phosphorylate the CREBTIDE substrate peptide (KRREILSRPSYR) in the following assay condition: 10 ul diluted PKC mu protein 10 ul CREBTIDE substrate peptide (1 mg/ml stock) 5 ul [32P] ATP mixture (250 uM ATP, 166 nCi/ul in 4x assay dilution buffer) The various reaction components, except [32P] ATP, were incubated at 30C and the reaction started by the addition of [32P] ATP. After 15 minutes, the reaction was terminated by spotting 20 ul of the reaction mixture onto a phosphocellulose P81 paper. The P81 paper was dried and washed several times in 1% phosphoric acid prior to counting in the presence of scintillation fluid in a scintillation counter. Specific activity: 680 nmol phosphate incorporated into CREBTIDE substrate peptide per minute per mg protein at 30C for 15 minutes using a final concentration of 50 uM ATP (0.83 uCi/assay).</p>

Images

Bioactivity: Recombinant Human PKC mu Protein [NBP1-99477] - Activity assessment, see Application Notes for more details.

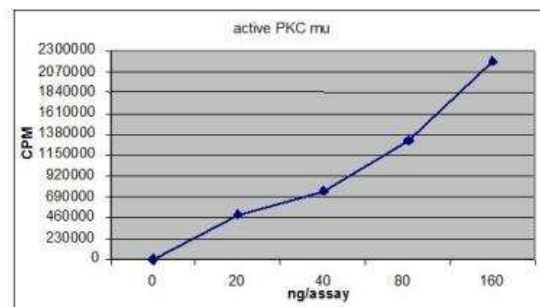


Fig. 1 PKC mu activity assay

SDS-Page: Recombinant Human PKC mu Protein [NBP1-99477] - 1 ug of PKC mu protein. The scan of the gel showed >90% purity of the PKCmu product and the band was at ~131 kDa.

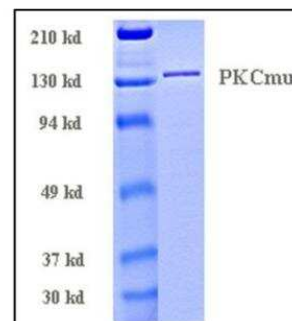


Fig. 2 PKC mu protein gel



Novus Biologicals USA

10730 E. Briarwood Avenue
Centennial, CO 80112
USA
Phone: 303.730.1950
Toll Free: 1.888.506.6887
Fax: 303.730.1966
nb-customerservice@bio-techne.com

Bio-Techne Canada

21 Canmotor Ave
Toronto, ON M8Z 4E6
Canada
Phone: 905.827.6400
Toll Free: 855.668.8722
Fax: 905.827.6402
canada.inquires@bio-techne.com

Bio-Techne Ltd

19 Barton Lane
Abingdon Science Park
Abingdon, OX14 3NB, United Kingdom
Phone: (44) (0) 1235 529449
Free Phone: 0800 37 34 15
Fax: (44) (0) 1235 533420
info.EMEA@bio-techne.com

General Contact Information

www.novusbio.com
Technical Support: nb-technical@bio-techne.com
Orders: nb-customerservice@bio-techne.com
General: novus@novusbio.com

Limitations

This product is for research use only and is not approved for use in humans or in clinical diagnosis. Peptides and proteins are guaranteed for 3 months from date of receipt.

For more information on our 100% guarantee, please visit www.novusbio.com/guarantee

Earn gift cards/discounts by submitting a review: www.novusbio.com/reviews/submit/NBP1-99477

Earn gift cards/discounts by submitting a publication using this product:
www.novusbio.com/publications

