

Product Datasheet

Recombinant Human Creatine kinase MT 1B His Protein NBP1-98939-100ug

Unit Size: 100 ug

Store at 4C short term. Aliquot and store at -20C long term. Avoid freeze-thaw cycles.

www.novusbio.com



technical@novusbio.com

Protocols, Publications, Related Products, Reviews, Research Tools and Images at:
www.novusbio.com/NBP1-98939

Updated 10/23/2024 v.20.1

Earn rewards for product
reviews and publications.

Submit a publication at www.novusbio.com/publications

Submit a review at www.novusbio.com/reviews/destination/NBP1-98939



NBP1-98939-100ug

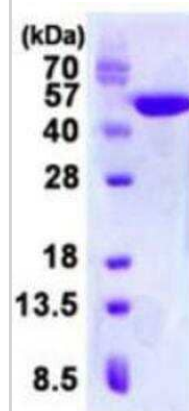
Recombinant Human Creatine kinase MT 1B His Protein

Product Information	
Unit Size	100 ug
Concentration	1 mg/ml
Storage	Store at 4C short term. Aliquot and store at -20C long term. Avoid freeze-thaw cycles.
Preservative	No Preservative
Purity	>95%, by SDS-PAGE
Buffer	20 mM Tris-HCl buffer (pH 8.0), 0.15 M NaCl, 10% glycerol
Target Molecular Weight	45 kDa
Product Description	
Description	<p>A bioactive recombinant protein with a N-Terminal His-tag and corresponding to the amino acids 40-417 of Human Creatine kinase MT 1B</p> <p>Source: <i>E.coli</i></p> <p>Amino Acid Sequence: MGSSHHHHHH SSGLVPRGSH MGSHTMASERR RLYPPSAEYP DLRKHNNCMA SHLTPAVYAR LCDKTTPTGW TLDQCIQTGV DNP GHPFIKT VGMVAGDEET YEVFADLFDP VIQERHNGYD PRTMKHTTDL DASKIRSGYF DERYVLSSRV RTGRSIRGLS LPPACTRAER REVERVVVDA LSGLKGDLAG RYYRLSEMTE AEQQQLIDDH FLFDKPV SPL LTAAGMARDW PDARGIWHNN EKSFLIWVNE EDHTRVISM KGGNMKRVFE RFCRGLKEVE RLIQERGWEF MWNERLG YIL TCPSNLGTGL RAGVHIKLPL LSKDSRFPKI LENLRLQKRG TGGVDTAATG GVFDISNLDR LGKSEVELVQ LVIDGVNYLI DCERRLERGQ DIRIPTVVIH TKH</p>
Gene ID	1159
Gene Symbol	CKMT1B
Species	Human
Details of Functionality	Specific activity is > 50 units/mg, and is defined as the amount of enzyme that convert 1.0 umole of phosphate from phosphocreatine to ADP per minute at pH 7.5 at 37C.
Product Application Details	
Applications	SDS-Page, Enzyme Activity
Recommended Dilutions	SDS-Page, Enzyme Activity



Images

SDS-Page: Creatine kinase MT 1B Protein [NBP1-98939] - 15% SDS-PAGE (3 ug).





Novus Biologicals USA

10730 E. Briarwood Avenue
Centennial, CO 80112
USA
Phone: 303.730.1950
Toll Free: 1.888.506.6887
Fax: 303.730.1966
nb-customerservice@bio-techne.com

Bio-Techne Canada

21 Canmotor Ave
Toronto, ON M8Z 4E6
Canada
Phone: 905.827.6400
Toll Free: 855.668.8722
Fax: 905.827.6402
canada.inquires@bio-techne.com

Bio-Techne Ltd

19 Barton Lane
Abingdon Science Park
Abingdon, OX14 3NB, United Kingdom
Phone: (44) (0) 1235 529449
Free Phone: 0800 37 34 15
Fax: (44) (0) 1235 533420
info.EMEA@bio-techne.com

General Contact Information

www.novusbio.com
Technical Support: nb-technical@bio-techne.com
Orders: nb-customerservice@bio-techne.com
General: novus@novusbio.com

Products Related to NBP1-98939-100ug

DBD00	BDNF [HRP]
NBP3-05655-100ul	Creatine kinase MT 1B Antibody - Azide and BSA Free
NB100-56503	Cytochrome c Antibody (7H8.2C12) - BSA Free
NBP2-22127	AMPK alpha 1 Antibody (2B7) - BSA Free

Limitations

This product is for research use only and is not approved for use in humans or in clinical diagnosis. Peptides and proteins are guaranteed for 3 months from date of receipt.

For more information on our 100% guarantee, please visit www.novusbio.com/guarantee

Earn gift cards/discounts by submitting a review: www.novusbio.com/reviews/submit/NBP1-98939

Earn gift cards/discounts by submitting a publication using this product:
www.novusbio.com/publications

