

# Product Datasheet

## Cytokeratin 18 Antibody (RCK106) - BSA Free NBP1-97714

Unit Size: 0.1 mg

Store at 4C short term. Aliquot and store at -20C long term. Avoid freeze-thaw cycles.

[www.novusbio.com](http://www.novusbio.com)



[technical@novusbio.com](mailto:technical@novusbio.com)

Protocols, Publications, Related Products, Reviews, Research Tools and Images at:  
[www.novusbio.com/NBP1-97714](http://www.novusbio.com/NBP1-97714)

Updated 11/1/2024 v.20.1

Earn rewards for product  
reviews and publications.

Submit a publication at [www.novusbio.com/publications](http://www.novusbio.com/publications)

Submit a review at [www.novusbio.com/reviews/destination/NBP1-97714](http://www.novusbio.com/reviews/destination/NBP1-97714)

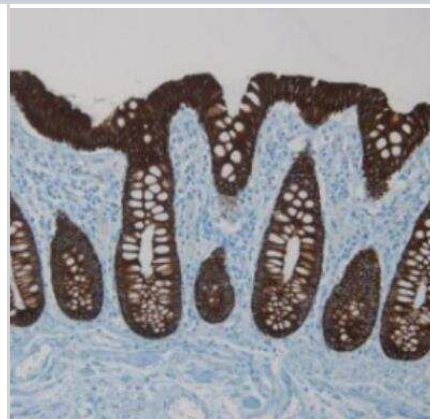


**NBP1-97714****Cytokeratin 18 Antibody (RCK106) - BSA Free**

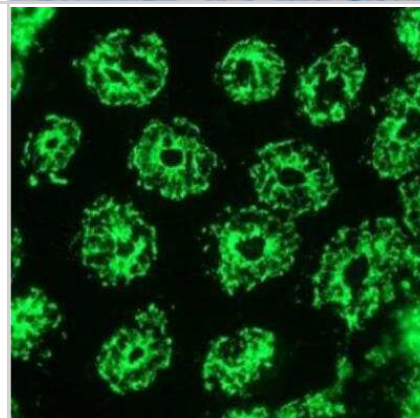
<b>Product Information</b>	
<b>Unit Size</b>	0.1 mg
<b>Concentration</b>	1 mg/ml
<b>Storage</b>	Store at 4C short term. Aliquot and store at -20C long term. Avoid freeze-thaw cycles.
<b>Clonality</b>	Monoclonal
<b>Clone</b>	RCK106
<b>Preservative</b>	0.09% Sodium Azide
<b>Isotype</b>	IgG1
<b>Purity</b>	Protein A or G purified
<b>Buffer</b>	PBS
<b>Product Description</b>	
<b>Description</b>	The antibody is shipped at ambient temperature and may be stored at 4C. For prolonged storage prepare appropriate aliquots and store at or below -20C. Prior to use, an aliquot is thawed slowly in the dark at ambient temperature, spun down again and used to prepare working dilutions by adding sterile phosphate buffered saline (PBS, pH 7.2). Repeated thawing and freezing should be avoided. Working dilutions should be stored at 4C, not refrozen, and preferably used the same day. If a slight precipitation occurs upon storage, this should be removed by centrifugation. It will not affect the performance or the concentration of the product.
<b>Host</b>	Mouse
<b>Gene ID</b>	3875
<b>Gene Symbol</b>	KRT18
<b>Species</b>	Human
<b>Marker</b>	Epithelial Marker
<b>Specificity/Sensitivity</b>	This antibody reacts exclusively with Cytokeratin 18 in glandular epithelial cells of the digestive, respiratory, and urogenital tracts, endocrine and exocrine cells and mesothelial cells, as well as adenocarcinomas originating from them.
<b>Immunogen</b>	Derived by fusion of SP2/0 Mouse myeloma cells with spleen cells from a Mouse immunized with Cytokeratins from the Human bladder carcinoma cell line T24.
<b>Product Application Details</b>	
<b>Applications</b>	Western Blot, Flow Cytometry, Immunocytochemistry/ Immunofluorescence, Immunohistochemistry, Immunohistochemistry-Frozen, Immunohistochemistry-Paraffin, CyTOF-ready
<b>Recommended Dilutions</b>	Western Blot 1:100-1:1000, Flow Cytometry 1:100-1:200, Immunohistochemistry 1:10-1:500, Immunocytochemistry/ Immunofluorescence 1:10-1:500, Immunohistochemistry-Paraffin 1:10-1:500, Immunohistochemistry-Frozen 1:100-1:200, CyTOF-ready
<b>Application Notes</b>	Optimal antibody dilution should be determined by titration; recommended range is 1:100 - 1:200 for flow cytometry, and for immunohistochemistry with avidin-biotinylated Horseradish peroxidase complex (ABC) as detection reagent, and 1:100 - 1:1000 for immunoblotting applications.  This antibody is CyTOF ready.

## Images

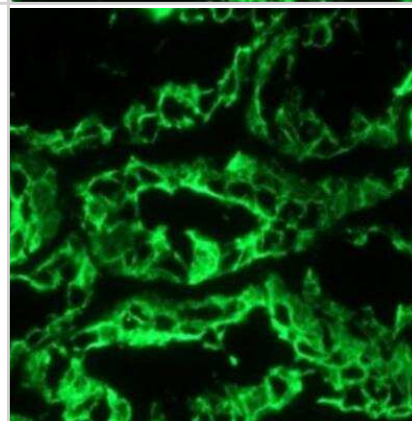
Immunohistochemistry-Paraffin: Cytokeratin 18 Antibody (RCK106)  
[NBP1-97714] - Paraffin section of human colon



Immunohistochemistry-Frozen: Cytokeratin 18 Antibody (RCK106)  
[NBP1-97714] - Frozen section of human small intestine



Immunohistochemistry-Frozen: Cytokeratin 18 Antibody (RCK106)  
[NBP1-97714] - Frozen section of human kidney





### **Novus Biologicals USA**

10730 E. Briarwood Avenue  
Centennial, CO 80112  
USA  
Phone: 303.730.1950  
Toll Free: 1.888.506.6887  
Fax: 303.730.1966  
nb-customerservice@bio-techne.com

### **Bio-Techne Canada**

21 Canmotor Ave  
Toronto, ON M8Z 4E6  
Canada  
Phone: 905.827.6400  
Toll Free: 855.668.8722  
Fax: 905.827.6402  
canada.inquires@bio-techne.com

### **Bio-Techne Ltd**

19 Barton Lane  
Abingdon Science Park  
Abingdon, OX14 3NB, United Kingdom  
Phone: (44) (0) 1235 529449  
Free Phone: 0800 37 34 15  
Fax: (44) (0) 1235 533420  
info.EMEA@bio-techne.com

### **General Contact Information**

[www.novusbio.com](http://www.novusbio.com)  
Technical Support: [nb-technical@bio-techne.com](mailto:nb-technical@bio-techne.com)  
Orders: [nb-customerservice@bio-techne.com](mailto:nb-customerservice@bio-techne.com)  
General: [novus@novusbio.com](mailto:novus@novusbio.com)

### **Limitations**

This product is for research use only and is not approved for use in humans or in clinical diagnosis. Primary Antibodies are guaranteed for 1 year from date of receipt.

For more information on our 100% guarantee, please visit [www.novusbio.com/guarantee](http://www.novusbio.com/guarantee)

Earn gift cards/discounts by submitting a review: [www.novusbio.com/reviews/submit/NBP1-97714](http://www.novusbio.com/reviews/submit/NBP1-97714)

Earn gift cards/discounts by submitting a publication using this product:  
[www.novusbio.com/publications](http://www.novusbio.com/publications)

