

Product Datasheet

CTRP7 Antibody (Anna-1) NBP1-97528

Unit Size: 0.1 mg

Store at 4C short term. Aliquot and store at -20C long term. Avoid freeze-thaw cycles.

www.novusbio.com



technical@novusbio.com

Protocols, Publications, Related Products, Reviews, Research Tools and Images at:
www.novusbio.com/NBP1-97528

Updated 1/6/2021 v.20.1

Earn rewards for product
reviews and publications.

Submit a publication at www.novusbio.com/publications

Submit a review at www.novusbio.com/reviews/destination/NBP1-97528



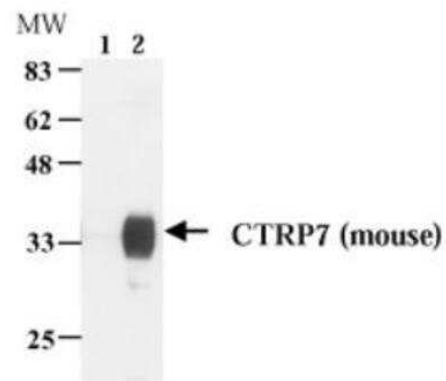
NBP1-97528**CTRP7 Antibody (Anna-1)**

Product Information	
Unit Size	0.1 mg
Concentration	1.0 mg/ml
Storage	Store at 4C short term. Aliquot and store at -20C long term. Avoid freeze-thaw cycles.
Clonality	Monoclonal
Clone	Anna-1
Preservative	0.02% Sodium Azide
Isotype	IgG1
Purity	Protein G purified
Buffer	PBS
Product Description	
Host	Mouse
Gene ID	114905
Gene Symbol	C1QTNF7
Species	Human, Mouse
Reactivity Notes	Human and Mouse. Please note that this antibody is reactive to Mouse and derived from the same host, Mouse. Additional Mouse on Mouse blocking steps may be required for IHC and ICC experiments. Please contact Technical Support for more information.
Immunogen	Recombinant mouse CTRP7 (C1q tumor necrosis factor-alpha-related protein 7) (aa 18-290).
Product Application Details	
Applications	Western Blot, ELISA, Immunohistochemistry, Immunohistochemistry-Paraffin, Immunoprecipitation
Recommended Dilutions	Western Blot 1:1000, ELISA 1:100-1:2000, Immunohistochemistry 1:10-1:500, Immunoprecipitation 1:200, Immunohistochemistry-Paraffin 1:10-1:500

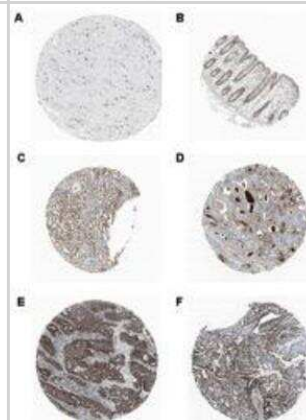


Images

Western Blot: CTRP7 Antibody (Anna-1) [NBP1-97528] - Analysis of mouse CTRP7 using MAb to CTRP7 (Anna-1). Method: Cell extracts (5x105) from HEK 293T(lane1) or HEK293wt transfected with a plasmid coding for mouse CTRP7 (lane 2) were resolved by SDS-PAGE under reducing conditions, transferred to nitrocellulose and incubated with the MAb to CTRP7 (Anna-1) (1:1000) for 2 hours, followed by incubation with HRP-coupled anti-mouse secondary antibody (1:4000).



Immunohistochemistry-Paraffin: CTRP7 Antibody (Anna-1) [NBP1-97528] - Staining of endogenous human CTRP7 in different human tissues (paraffin sections) using MAb to CTRP7 (Anna-1). Method: Different human normal (A: Cerebral cortex; B: Colon; C: Kidney) or cancer (D: Prostate; E: Colo-rectal; F: Pancreatic) tissues were stained with MAb to CTRP7 (Anna-1) by standard immunohistochemistry.





Novus Biologicals USA

10730 E. Briarwood Avenue
Centennial, CO 80112
USA
Phone: 303.730.1950
Toll Free: 1.888.506.6887
Fax: 303.730.1966
nb-customerservice@bio-techne.com

Bio-Techne Canada

21 Canmotor Ave
Toronto, ON M8Z 4E6
Canada
Phone: 905.827.6400
Toll Free: 855.668.8722
Fax: 905.827.6402
canada.inquires@bio-techne.com

Bio-Techne Ltd

19 Barton Lane
Abingdon Science Park
Abingdon, OX14 3NB, United Kingdom
Phone: (44) (0) 1235 529449
Free Phone: 0800 37 34 15
Fax: (44) (0) 1235 533420
info.EMEA@bio-techne.com

General Contact Information

www.novusbio.com
Technical Support: nb-technical@bio-
techne.com
Orders: nb-customerservice@bio-techne.com
General: novus@novusbio.com

Limitations

This product is for research use only and is not approved for use in humans or in clinical diagnosis. Primary Antibodies are guaranteed for 1 year from date of receipt.

For more information on our 100% guarantee, please visit www.novusbio.com/guarantee

Earn gift cards/discounts by submitting a review: www.novusbio.com/reviews/submit/NBP1-97528

Earn gift cards/discounts by submitting a publication using this product:
www.novusbio.com/publications

