

# Product Datasheet

## Mouse IgG F(ab) Isotype Control [Rhodamine] NBP1-97072

Unit Size: 1 mg

Store lyophilized antibody at 4C in the dark. Aliquot reconstituted liquid and store at -20C. Avoid freeze-thaw cycles.

[www.novusbio.com](http://www.novusbio.com)



[technical@novusbio.com](mailto:technical@novusbio.com)

Protocols, Publications, Related Products, Reviews, Research Tools and Images at:  
[www.novusbio.com/NBP1-97072](http://www.novusbio.com/NBP1-97072)

Updated 9/23/2021 v.20.1

Earn rewards for product  
reviews and publications.

Submit a publication at [www.novusbio.com/publications](http://www.novusbio.com/publications)

Submit a review at [www.novusbio.com/reviews/destination/NBP1-97072](http://www.novusbio.com/reviews/destination/NBP1-97072)



**NBP1-97072**

Mouse IgG F(ab) Isotype Control [Rhodamine]

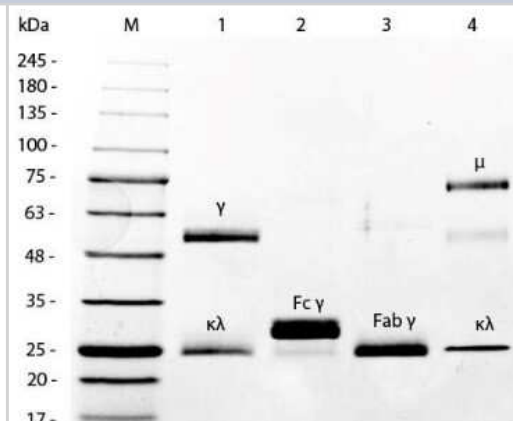
Product Information	
Unit Size	1 mg
Concentration	LYOPH mg/ml
Storage	Store lyophilized antibody at 4C in the dark. Aliquot reconstituted liquid and store at -20C. Avoid freeze-thaw cycles.
Preservative	No Preservative
Reconstitution Instructions	Reconstitute with 1.0 ml deionized water.
Isotype	IgG
Conjugate	Rhodamine
Purity	Ion exchange chromatography
Buffer	Lyophilized from 0.02 M Potassium Phosphate, 0.15 M Sodium Chloride, pH 7.2

Product Description	
Description	This Mouse IgG F(ab) immunoglobulin is useful as an isotype control for Mouse IgG F(ab) antibody.
Host	Mouse
Species	Mouse
Specificity/Sensitivity	Assay by immunoelectrophoresis resulted in a single precipitin arc against anti-Mouse IgG, anti-Mouse IgG F(ab)2 and anti-Mouse Serum. No reaction was observed against anti-Mouse IgG F(c) or anti-Papain.
Notes	Aliquot reconstituted liquid and store at -20C. Avoid freeze-thaw cycles.

Product Application Details	
Applications	SDS-Page
Recommended Dilutions	SDS-Page 1:100 - 1:2000
Application Notes	This product is also suitable for multiplex analysis, including multicolor imaging, utilizing various commercial platforms.

**Images**

SDS-Page: Mouse IgG F(ab) Isotype Control [Rhodamine] [NBP1-97072] - Lane 1: 5 uL Opal Prestained Marker. Lane 2: Reduced Mouse IgG Whole Molecule. Lane 3: Reduced Mouse F(c) Fragment. Lane 4: Reduced Mouse F(ab) Fragment Rhodamine Conjugated. Lane 5: Mouse IgM Kappa Myeloma Protein. Load: 1 ug per lane.





### **Novus Biologicals USA**

10730 E. Briarwood Avenue  
Centennial, CO 80112  
USA  
Phone: 303.730.1950  
Toll Free: 1.888.506.6887  
Fax: 303.730.1966  
nb-customerservice@bio-techne.com

### **Bio-Techne Canada**

21 Canmotor Ave  
Toronto, ON M8Z 4E6  
Canada  
Phone: 905.827.6400  
Toll Free: 855.668.8722  
Fax: 905.827.6402  
canada.inquires@bio-techne.com

### **Bio-Techne Ltd**

19 Barton Lane  
Abingdon Science Park  
Abingdon, OX14 3NB, United Kingdom  
Phone: (44) (0) 1235 529449  
Free Phone: 0800 37 34 15  
Fax: (44) (0) 1235 533420  
info.EMEA@bio-techne.com

### **General Contact Information**

[www.novusbio.com](http://www.novusbio.com)  
Technical Support: nb-technical@bio-techne.com  
Orders: nb-customerservice@bio-techne.com  
General: novus@novusbio.com

### **Limitations**

This product is for research use only and is not approved for use in humans or in clinical diagnosis. Isotype Controls are guaranteed for 1 year from date of receipt.

For more information on our 100% guarantee, please visit [www.novusbio.com/guarantee](http://www.novusbio.com/guarantee)

Earn gift cards/discounts by submitting a review: [www.novusbio.com/reviews/submit/NBP1-97072](http://www.novusbio.com/reviews/submit/NBP1-97072)

Earn gift cards/discounts by submitting a publication using this product:  
[www.novusbio.com/publications](http://www.novusbio.com/publications)

