

# Product Datasheet

## IgG F(ab) Native Protein NBP1-97014

Unit Size: 2 mg

Store at 4C short term. Aliquot and store at -20C long term. Avoid freeze-thaw cycles.

[www.novusbio.com](http://www.novusbio.com)



[technical@novusbio.com](mailto:technical@novusbio.com)

Protocols, Publications, Related Products, Reviews, Research Tools and Images at:  
[www.novusbio.com/NBP1-97014](http://www.novusbio.com/NBP1-97014)

Updated 9/23/2021 v.20.1

Earn rewards for product  
reviews and publications.

Submit a publication at [www.novusbio.com/publications](http://www.novusbio.com/publications)

Submit a review at [www.novusbio.com/reviews/destination/NBP1-97014](http://www.novusbio.com/reviews/destination/NBP1-97014)



**NBP1-97014**

IgG F(ab) Native Protein

**Product Information**

<b>Unit Size</b>	2 mg
<b>Concentration</b>	5.73 mg/ml
<b>Storage</b>	Store at 4C short term. Aliquot and store at -20C long term. Avoid freeze-thaw cycles.
<b>Preservative</b>	0.01% Sodium Azide
<b>Purity</b>	Immunoelectrophoresis (IEP)
<b>Buffer</b>	0.01 M Sodium Phosphate, 0.15 M Sodium Chloride, pH 7.2

**Product Description**

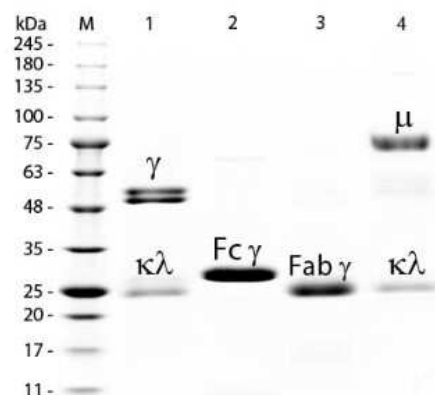
<b>Description</b>	Native Rat IgG, Fab.  <b>Source:</b> <i>Serum</i>
<b>Species</b>	Rat
<b>Preparation Method</b>	This product was prepared from normal serum by a multi-step process which includes delipidation, salt fractionation and ion exchange chromatography followed by papain digestion and extensive dialysis against the buffer stated above. Assay by immunoelectrophoresis resulted in a single precipitin arc against anti-Rat Serum, anti-Rat IgG and anti-Rat IgG F(ab') <sub>2</sub> . No reaction was observed against anti-Rat IgG F(c) or anti- Papain.

**Product Application Details**

<b>Applications</b>	Western Blot, ELISA, Immunoprecipitation, SDS-Page
<b>Recommended Dilutions</b>	Western Blot, ELISA, Immunoprecipitation, SDS-Page

**Images**

SDS-Page: IgG F(ab) Native Protein [NBP1-97014] - SDS-PAGE of Rat IgG Fab Fragment. Lane M: 3 uL Opal Prestained Marker. Lane 1: Reduced Rat IgG Whole Molecule. Lane 2: Reduced Rat IgG F(c) Fragment. Lane 3: Reduced Rat IgG Fab Fragment. Lane 4: Reduced Rat IgM Whole Molecule. Load: 1 ug of IgG, F(c), Fab; 1.5 ug of IgM. Predicted/Observed size: IgG at 55 and 25 kDa; F(c) at 25 kDa; Fab at 25 kDa; IgM at 78 and 25 kDa. Observed F(c) Fragment migrates slightly higher.





### **Novus Biologicals USA**

10730 E. Briarwood Avenue  
Centennial, CO 80112  
USA  
Phone: 303.730.1950  
Toll Free: 1.888.506.6887  
Fax: 303.730.1966  
nb-customerservice@bio-techne.com

### **Bio-Techne Canada**

21 Canmotor Ave  
Toronto, ON M8Z 4E6  
Canada  
Phone: 905.827.6400  
Toll Free: 855.668.8722  
Fax: 905.827.6402  
canada.inquires@bio-techne.com

### **Bio-Techne Ltd**

19 Barton Lane  
Abingdon Science Park  
Abingdon, OX14 3NB, United Kingdom  
Phone: (44) (0) 1235 529449  
Free Phone: 0800 37 34 15  
Fax: (44) (0) 1235 533420  
info.EMEA@bio-techne.com

### **General Contact Information**

www.novusbio.com  
Technical Support: nb-technical@bio-  
techne.com  
Orders: nb-customerservice@bio-techne.com  
General: novus@novusbio.com

### **Limitations**

This product is for research use only and is not approved for use in humans or in clinical diagnosis. Peptides and proteins are guaranteed for 3 months from date of receipt.

For more information on our 100% guarantee, please visit [www.novusbio.com/guarantee](http://www.novusbio.com/guarantee)

Earn gift cards/discounts by submitting a review: [www.novusbio.com/reviews/submit/NBP1-97014](http://www.novusbio.com/reviews/submit/NBP1-97014)

Earn gift cards/discounts by submitting a publication using this product:  
[www.novusbio.com/publications](http://www.novusbio.com/publications)

