

Product Datasheet

Mouse IgG1 Lambda Isotype Control (MG1L) NBP1-96982

Unit Size: 1 mg

Store at 4C short term. For extended storage, add an equal volume of glycerol, aliquot and store at -20C or below. Avoid repeated freeze-thaw cycles.

www.novusbio.com



technical@novusbio.com

Protocols, Publications, Related Products, Reviews, Research Tools and Images at:
www.novusbio.com/NBP1-96982

Updated 10/23/2024 v.20.1

Earn rewards for product
reviews and publications.

Submit a publication at www.novusbio.com/publications

Submit a review at www.novusbio.com/reviews/destination/NBP1-96982



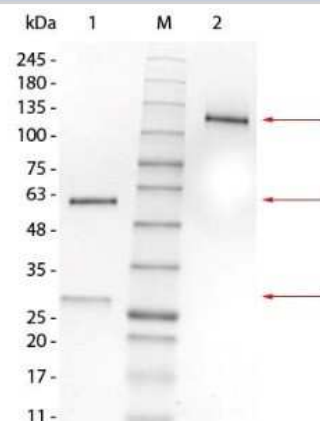
NBP1-96982**Mouse IgG1 Lambda Isotype Control (MG1L)**

Product Information	
Unit Size	1 mg
Concentration	Please contact technical services for concentration.
Storage	Store at 4C short term. For extended storage, add an equal volume of glycerol, aliquot and store at -20C or below. Avoid repeated freeze-thaw cycles.
Clonality	Monoclonal
Clone	MG1L
Preservative	0.01% Sodium Azide
Isotype	IgG1 Lambda
Purity	Protein A purified
Buffer	0.02 M Potassium Phosphate, 0.15 M Sodium Chloride, pH 7.2
Product Description	
Description	<p>This antibody has been prepared from concentrated cell culture supernatant by immunoaffinity chromatography using protein A. Assay by immunoelectrophoresis resulted in a single precipitin arc against anti-Mouse IgG and anti-Mouse serum. Isotyping assay resulted non-reactive with antisera to mouse IgG2a, IgG2b, IgG3, IgA, IgM. Light chain composition has been confirmed by SDS-PAGE.</p> <p>Store vial at 4C prior to opening. Stable 4C as an undiluted liquid. Dilute only prior to immediate use. For extended storage mix with an equal volume of glycerol, aliquot contents and freeze at -20C or below. Avoid cycles of freezing and thawing.</p>
Host	Mouse
Species	Mouse
Specificity/Sensitivity	Isotyping assay resulted non-reactive with antisera to mouse IgG2a, IgG2b, IgG3, IgA, IgM
Product Application Details	
Applications	Western Blot, ELISA, Fluorophore-linked immunosorbent assay, Flow Cytometry, Immunocytochemistry/ Immunofluorescence, SDS-Page
Recommended Dilutions	Western Blot, Flow Cytometry 1:1000-1:5000, ELISA, Immunocytochemistry/ Immunofluorescence 1:10 - 1:500, SDS-Page 1:100 - 1:2000, Fluorophore-linked immunosorbent assay 1:100 - 1:2000
Application Notes	This product has been tested in SDS-Page and ELISA and can be utilized as a control or standard reagent in Flow cytometry, Western Blotting, and ELISA experiments where determination of sample isotype is important.



Images

SDS-Page: Mouse IgG1 Lambda Isotype Control (MG1L) [NBP1-96982]
- SDS-PAGE of Mouse IgG1 Lambda Isotype Control. Lane 1: Mouse IgG1 Lambda Isotype Control, Reduced. M: Opal Pre-stained Ladder. Lane 2: Mouse IgG1 Lambda Isotype Control, Non-reduced. Load: 1.0 ug per lane. Predicted/Observed: 120 kDa Non-reduced, 55 and 25 Reduced.





Novus Biologicals USA

10730 E. Briarwood Avenue
Centennial, CO 80112
USA
Phone: 303.730.1950
Toll Free: 1.888.506.6887
Fax: 303.730.1966
nb-customerservice@bio-techne.com

Bio-Techne Canada

21 Canmotor Ave
Toronto, ON M8Z 4E6
Canada
Phone: 905.827.6400
Toll Free: 855.668.8722
Fax: 905.827.6402
canada.inquires@bio-techne.com

Bio-Techne Ltd

19 Barton Lane
Abingdon Science Park
Abingdon, OX14 3NB, United Kingdom
Phone: (44) (0) 1235 529449
Free Phone: 0800 37 34 15
Fax: (44) (0) 1235 533420
info.EMEA@bio-techne.com

General Contact Information

www.novusbio.com
Technical Support: nb-technical@bio-techne.com
Orders: nb-customerservice@bio-techne.com
General: novus@novusbio.com

Limitations

This product is for research use only and is not approved for use in humans or in clinical diagnosis. Isotype Controls are guaranteed for 1 year from date of receipt.

For more information on our 100% guarantee, please visit www.novusbio.com/guarantee

Earn gift cards/discounts by submitting a review: www.novusbio.com/reviews/submit/NBP1-96982

Earn gift cards/discounts by submitting a publication using this product:
www.novusbio.com/publications

