

# Product Datasheet

## Mouse IgM Lambda Isotype Control (MML) NBP1-96976

Unit Size: 1 mg

Store at 4C short term. For extended storage, add an equal volume of glycerol, aliquot and store at -20C or below. Avoid repeated freeze-thaw cycles.

[www.novusbio.com](http://www.novusbio.com)



[technical@novusbio.com](mailto:technical@novusbio.com)

Protocols, Publications, Related Products, Reviews, Research Tools and Images at:  
[www.novusbio.com/NBP1-96976](http://www.novusbio.com/NBP1-96976)

Updated 10/23/2024 v.20.1

Earn rewards for product  
reviews and publications.

Submit a publication at [www.novusbio.com/publications](http://www.novusbio.com/publications)

Submit a review at [www.novusbio.com/reviews/destination/NBP1-96976](http://www.novusbio.com/reviews/destination/NBP1-96976)

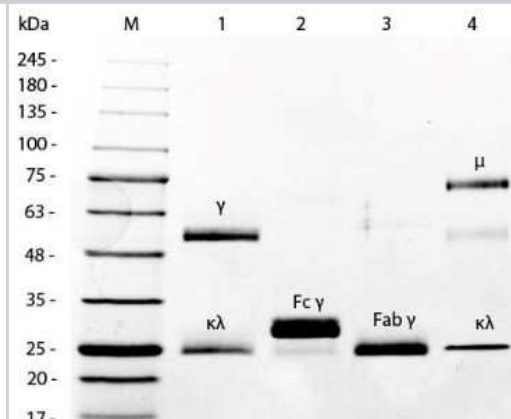


**NBP1-96976****Mouse IgM Lambda Isotype Control (MML)**

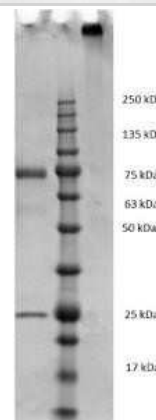
<b>Product Information</b>	
<b>Unit Size</b>	1 mg
<b>Concentration</b>	Please contact technical services for concentration.
<b>Storage</b>	Store at 4C short term. For extended storage, add an equal volume of glycerol, aliquot and store at -20C or below. Avoid repeated freeze-thaw cycles.
<b>Clonality</b>	Monoclonal
<b>Clone</b>	MML
<b>Preservative</b>	0.1% Sodium Azide
<b>Isotype</b>	IgM Lambda
<b>Purity</b>	Protein A purified
<b>Buffer</b>	0.1 M Tris Chloride, 0.5 M Sodium Chloride, pH 8.0
<b>Product Description</b>	
<b>Description</b>	<p>This antibody has been prepared from concentrated cell culture supernatant by immunoaffinity chromatography using protein A. Assay by immunoelectrophoresis resulted in a single precipitin arc against anti-Mouse IgM mu and anti-Mouse serum. Isotyping assay resulted non-reactive with antisera to mouse IgG1, IgG2a, IgG2b, Ig3, IgA. Light chain composition has been confirmed by SDS-PAGE.</p> <p>Store vial at 4C prior to opening. This product is stable 4C as an undiluted liquid. Dilute only prior to immediate use. For extended storage mix with an equal volume of glycerol, aliquot contents and freeze at -20C or below. Avoid cycles of freezing and thawing.</p>
<b>Host</b>	Mouse
<b>Gene ID</b>	3507
<b>Gene Symbol</b>	IGHM
<b>Species</b>	Mouse
<b>Specificity/Sensitivity</b>	Isotyping assay resulted non-reactive with antisera to mouse IgG1, IgG2a, IgG2b, Ig3, IgA
<b>Product Application Details</b>	
<b>Applications</b>	Western Blot, ELISA, Fluorophore-linked immunosorbent assay, Flow Cytometry, Immunocytochemistry/ Immunofluorescence, SDS-Page
<b>Recommended Dilutions</b>	Western Blot 1:100 - 1:2000, Flow Cytometry 1:1000-1:5000, ELISA, Immunocytochemistry/ Immunofluorescence 1:10 - 1:500, SDS-Page, Fluorophore-linked immunosorbent assay 1:100 - 1:2000
<b>Application Notes</b>	This product has been tested in SDS-Page and can be utilized as a control or standard reagent in Flow cytometry, Western Blotting, and ELISA experiments where determination of sample isotype is important.

## Images

SDS-Page: Mouse IgM Lambda Isotype Control (MML) [NBP1-96976] - SDS-PAGE of Mouse IgM Lambda isotype control (38). Lane 1: 5 uL Opal Prestained Marker. Lane 2: Reduced Mouse IgG Whole Molecule. Lane 3: Reduced Mouse F(c) Fragment. Lane 4: Reduced Mouse F(ab) Fragment. Lane 5: Mouse IgM Lambda isotype control (38). Load: 1 ug per lane. Predicted/Observed size: IgG at 50 and 25 kDa; F(c) at 25 kDa; F(ab') at 25 kDa; IgM at 70 and 23 kDa. Observed F(c) Fragment migrates slightly higher.



SDS-Page: Mouse IgM Lambda Isotype Control (MML) [NBP1-96976] - SDS-PAGE of Mouse IgM lambda isotype control. Lane 1: 1x Reduced Mouse IgM lambda. Lane 2: Opal Prestained Standard. Lane 3: 1X Non-reduced Mouse IgM lambda. 4-20% Lonza SDS-PAGE; Coomassie Stained; ChemiDoc Imaged.





### **Novus Biologicals USA**

10730 E. Briarwood Avenue  
Centennial, CO 80112  
USA  
Phone: 303.730.1950  
Toll Free: 1.888.506.6887  
Fax: 303.730.1966  
nb-customerservice@bio-techne.com

### **Bio-Techne Canada**

21 Canmotor Ave  
Toronto, ON M8Z 4E6  
Canada  
Phone: 905.827.6400  
Toll Free: 855.668.8722  
Fax: 905.827.6402  
canada.inquires@bio-techne.com

### **Bio-Techne Ltd**

19 Barton Lane  
Abingdon Science Park  
Abingdon, OX14 3NB, United Kingdom  
Phone: (44) (0) 1235 529449  
Free Phone: 0800 37 34 15  
Fax: (44) (0) 1235 533420  
info.EMEA@bio-techne.com

### **General Contact Information**

[www.novusbio.com](http://www.novusbio.com)  
Technical Support: nb-technical@bio-techne.com  
Orders: nb-customerservice@bio-techne.com  
General: novus@novusbio.com

### **Products Related to NBP1-96976**

---

NB100-524	NOD2 Antibody (2D9) - BSA Free
7268-CT-100	CTLA-4 [Unconjugated]
NB200-541	Complement C4b/d Antibody (16D2)
NBP2-45731	beta-Galactosidase-1/GLB1 Antibody (OTI1C9)

---

### **Limitations**

This product is for research use only and is not approved for use in humans or in clinical diagnosis. Isotype Controls are guaranteed for 1 year from date of receipt.

For more information on our 100% guarantee, please visit [www.novusbio.com/guarantee](http://www.novusbio.com/guarantee)

Earn gift cards/discounts by submitting a review: [www.novusbio.com/reviews/submit/NBP1-96976](http://www.novusbio.com/reviews/submit/NBP1-96976)

Earn gift cards/discounts by submitting a publication using this product:  
[www.novusbio.com/publications](http://www.novusbio.com/publications)

