

# Product Datasheet

## Human IgM Isotype Control [FITC] NBP1-96829

Unit Size: 1 mg

Store lyophilized antibody at 4C in the dark. Aliquot reconstituted liquid and store at -20C. Avoid freeze-thaw cycles.

[www.novusbio.com](http://www.novusbio.com)



[technical@novusbio.com](mailto:technical@novusbio.com)

Protocols, Publications, Related Products, Reviews, Research Tools and Images at:  
[www.novusbio.com/NBP1-96829](http://www.novusbio.com/NBP1-96829)

Updated 10/29/2022 v.20.1

Earn rewards for product  
reviews and publications.

Submit a publication at [www.novusbio.com/publications](http://www.novusbio.com/publications)

Submit a review at [www.novusbio.com/reviews/destination/NBP1-96829](http://www.novusbio.com/reviews/destination/NBP1-96829)



**NBP1-96829****Human IgM Isotype Control [FITC]**

<b>Product Information</b>	
<b>Unit Size</b>	1 mg
<b>Concentration</b>	LYOPH mg/ml
<b>Storage</b>	Store lyophilized antibody at 4C in the dark. Aliquot reconstituted liquid and store at -20C. Avoid freeze-thaw cycles.
<b>Preservative</b>	0.01% Sodium Azide
<b>Reconstitution Instructions</b>	Reconstitute with 1.0 ml deionized water (or equivalent).
<b>Isotype</b>	IgM
<b>Conjugate</b>	FITC
<b>Purity</b>	Multi-step
<b>Buffer</b>	Lyophilized from 0.02 M Potassium Phosphate, 0.15 M Sodium Chloride, pH 7.2, 10 mg/mL Bovine Serum Albumin (BSA) - Immunoglobulin and Protease free

<b>Product Description</b>	
<b>Description</b>	This Human IgM immunoglobulin is useful as an isotype control for Human IgM antibody.
<b>Host</b>	Human
<b>Gene ID</b>	3507
<b>Gene Symbol</b>	IGHM
<b>Species</b>	Human
<b>Notes</b>	<p>This product was prepared from normal serum by delipidation, salt fractionation and ion change chromatography followed by extensive dialysis against the buffer stated above. Assay by immunoelectrophoresis resulted in a single precipitin arc against anti-Fluorescein, anti-Human IgM and anti-Human Serum.</p> <p>Store vial at 4C prior to restoration. For extended storage aliquot contents and freeze at -20C or below. Avoid cycles of freezing and thawing. Centrifuge product if not completely clear after standing at room temperature. This product is stable for several weeks at 4C as an undiluted liquid. Dilute only prior to immediate use.</p> <p>No test method can provide total assurance that the hepatitis B virus, hepatitis C virus, human immunodeficiency virus, or any other infectious agents are absent. Thus, all blood products, including purified proteins derived from human blood sources, should be handled at Biosafety Level 2 as recommended by the CDC \NIH manual entitled Biosafety in Microbiological and Biomedical Laboratories for potentially infectious human serum, blood specimens or proteins derived from same. Source material for the human blood product supplied to your facility has been tested for the detection of HIV antibody, Hepatitis B surface antigen, antibody to Hepatitis C, HIV 1 antigen(s), antibody to HTLV - I/II, and syphilis by FDA guidelines. All units were found to be non-reactive/negative for these tests. All human blood source material is collected in FDA licensed centers and is tested with FDA approved test kits.</p>

<b>Product Application Details</b>	
<b>Applications</b>	Dot Blot, Fluorophore-linked immunosorbent assay, Immunocytochemistry/Immunofluorescence
<b>Recommended Dilutions</b>	Immunocytochemistry/Immunofluorescence, Dot Blot, Fluorophore-linked immunosorbent assay

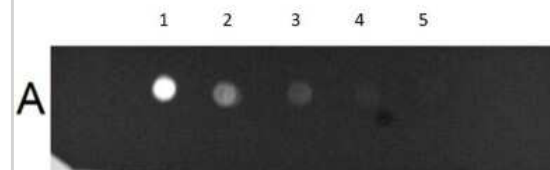


**Application Notes**

This isotype control is suitable for immunofluorescence microscopy, fluorescence based plate assays (FLISA) and fluorescent western blotting. This product is also suitable for multiplex analysis, including multicolor imaging, utilizing various commercial platforms.

**Images**

Dot Blot: Human IgM Isotype Control [FITC] [NBP1-96829] - Dot Blot Results of Human IgM isotype control [FITC]. Human IgM Whole Molecule Fluorescein Conjugate (1) 100ng, (2) 33.33ng, (3) 11.11ng, (4) 3.70ng, (5) 1.23ng. Block: Fluorescent Buffer at RT for 30 mins.





### **Novus Biologicals USA**

10730 E. Briarwood Avenue  
Centennial, CO 80112  
USA  
Phone: 303.730.1950  
Toll Free: 1.888.506.6887  
Fax: 303.730.1966  
nb-customerservice@bio-techne.com

### **Bio-Techne Canada**

21 Canmotor Ave  
Toronto, ON M8Z 4E6  
Canada  
Phone: 905.827.6400  
Toll Free: 855.668.8722  
Fax: 905.827.6402  
canada.inquires@bio-techne.com

### **Bio-Techne Ltd**

19 Barton Lane  
Abingdon Science Park  
Abingdon, OX14 3NB, United Kingdom  
Phone: (44) (0) 1235 529449  
Free Phone: 0800 37 34 15  
Fax: (44) (0) 1235 533420  
info.EMEA@bio-techne.com

### **General Contact Information**

www.novusbio.com  
Technical Support: nb-technical@bio-  
techne.com  
Orders: nb-customerservice@bio-techne.com  
General: novus@novusbio.com

### **Limitations**

This product is for research use only and is not approved for use in humans or in clinical diagnosis. Isotype Controls are guaranteed for 1 year from date of receipt.

For more information on our 100% guarantee, please visit [www.novusbio.com/guarantee](http://www.novusbio.com/guarantee)

Earn gift cards/discounts by submitting a review: [www.novusbio.com/reviews/submit/NBP1-96829](http://www.novusbio.com/reviews/submit/NBP1-96829)

Earn gift cards/discounts by submitting a publication using this product:  
[www.novusbio.com/publications](http://www.novusbio.com/publications)

