

# Product Datasheet

## Chicken IgM Native Protein NBP1-96785

Unit Size: 1 mg

Store at 4C short term. For extended storage, add an equal volume of glycerol, aliquot and store at -20C or below. Avoid repeated freeze-thaw cycles.

[www.novusbio.com](http://www.novusbio.com)



[technical@novusbio.com](mailto:technical@novusbio.com)

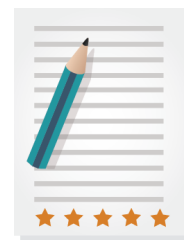
Protocols, Publications, Related Products, Reviews, Research Tools and Images at:  
[www.novusbio.com/NBP1-96785](http://www.novusbio.com/NBP1-96785)

Updated 10/23/2024 v.20.1

Earn rewards for product  
reviews and publications.

Submit a publication at [www.novusbio.com/publications](http://www.novusbio.com/publications)

Submit a review at [www.novusbio.com/reviews/destination/NBP1-96785](http://www.novusbio.com/reviews/destination/NBP1-96785)



**NBP1-96785**

## Chicken IgM Native Protein

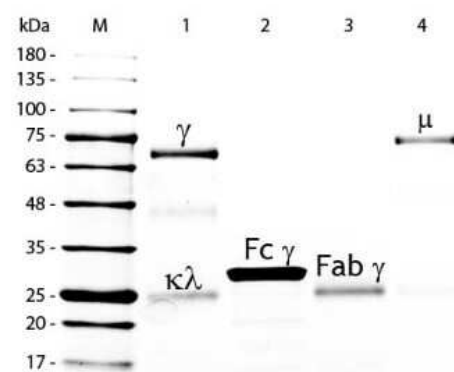
Product Information	
<b>Unit Size</b>	1 mg
<b>Concentration</b>	Please see the vial label for concentration. If unlisted please contact technical services.
<b>Storage</b>	Store at 4C short term. For extended storage, add an equal volume of glycerol, aliquot and store at -20C or below. Avoid repeated freeze-thaw cycles.
<b>Preservative</b>	0.1% Sodium Azide
<b>Purity</b>	Multi-step
<b>Buffer</b>	0.1 M Tris Chloride, 0.5 M Sodium Chloride, pH 8.0

Product Description	
<b>Description</b>	<p>Native Chicken Chicken IgM</p> <p>Source: Normal serum</p> <p>This product is stable for several weeks at 4C as an undiluted liquid. Dilute only prior to immediate use. For extended storage mix with an equal volume of glycerol, aliquot contents and freeze at -20C or below. Avoid cycles of freezing and thawing. Centrifuge product if not completely clear after standing at room temperature.</p>
<b>Species</b>	Chicken
<b>Preparation Method</b>	This product was prepared from normal serum by a multi-step process which includes delipidation, selective precipitation and tandem molecular sieve chromatography followed by extensive dialysis against the buffer stated above. Chicken IgM whole molecule assayed by immunoelectrophoresis resulted in a single precipitin arc against anti-Chicken Serum and anti-Chicken IgM (u chain specific). No reaction was observed against anti-Chicken IgG F(c). Some light chain cross reactivity will occur with anti-Chicken IgG. Analysis by SDS-PAGE was used to show purity at greater than 95%. Some high molecular weight banding may be visible. A minor band at ~50 kDa may also be visible.

Product Application Details	
<b>Applications</b>	Western Blot, ELISA, Immunohistochemistry, SDS-Page
<b>Recommended Dilutions</b>	Western Blot 1:100 - 1:2000, ELISA, Immunohistochemistry 1:10 - 1:500, SDS-Page
<b>Application Notes</b>	This product has been tested in SDS-Page and can be utilized as a control or standard reagent in Western Blotting and ELISA experiments.

**Images**

SDS-Page: Chicken IgM Native Protein [NBP1-96785] - SDS-PAGE of Chicken IgM Whole Molecule. Lane M: 5 uL Opal Prestained Marker. Lane 1: Reduced Chicken IgG Whole Molecule. Lane 2: Reduced Chicken IgG F(c) Fragment. Lane 3: Reduced Chicken IgG Fab Fragment. Lane 4: Reduced Chicken IgM Whole Molecule. Load: 1 ug per lane. Predicted/Observed size: IgG at 72 and 25 kDa; F(c) at 25 kDa; Fab at 25 kDa; IgM at 75 kDa. Observed F(c) Fragment migrates slightly higher. Other bands: Chicken IgG heavy chain alternative splicing variant at approximately 40 kDa in Lane 1.





### **Novus Biologicals USA**

10730 E. Briarwood Avenue  
Centennial, CO 80112

USA

Phone: 303.730.1950

Toll Free: 1.888.506.6887

Fax: 303.730.1966

[nb-customerservice@bio-techne.com](mailto:nb-customerservice@bio-techne.com)

### **Bio-Techne Canada**

21 Canmotor Ave  
Toronto, ON M8Z 4E6

Canada

Phone: 905.827.6400

Toll Free: 855.668.8722

Fax: 905.827.6402

[canada.inquires@bio-techne.com](mailto:canada.inquires@bio-techne.com)

### **Bio-Techne Ltd**

19 Barton Lane

Abingdon Science Park

Abingdon, OX14 3NB, United Kingdom

Phone: (44) (0) 1235 529449

Free Phone: 0800 37 34 15

Fax: (44) (0) 1235 533420

[info.EMEA@bio-techne.com](mailto:info.EMEA@bio-techne.com)

### **General Contact Information**

[www.novusbio.com](http://www.novusbio.com)

Technical Support: [nb-technical@bio-techne.com](mailto:nb-technical@bio-techne.com)

Orders: [nb-customerservice@bio-techne.com](mailto:nb-customerservice@bio-techne.com)

General: [novus@novusbio.com](mailto:novus@novusbio.com)

### **Limitations**

This product is for research use only and is not approved for use in humans or in clinical diagnosis. Peptides and proteins are guaranteed for 3 months from date of receipt.

For more information on our 100% guarantee, please visit [www.novusbio.com/guarantee](http://www.novusbio.com/guarantee)

Earn gift cards/discounts by submitting a review: [www.novusbio.com/reviews/submit/NBP1-96785](http://www.novusbio.com/reviews/submit/NBP1-96785)

Earn gift cards/discounts by submitting a publication using this product:

[www.novusbio.com/publications](http://www.novusbio.com/publications)

