

# Product Datasheet

## SATB2 Antibody - BSA Free

### NBP1-92365

Unit Size: 0.1 ml

Store at 4C short term. Aliquot and store at -20C long term. Avoid freeze-thaw cycles.

[www.novusbio.com](http://www.novusbio.com)



[technical@novusbio.com](mailto:technical@novusbio.com)

#### Publications: 1

Protocols, Publications, Related Products, Reviews, Research Tools and Images at:  
[www.novusbio.com/NBP1-92365](http://www.novusbio.com/NBP1-92365)

Updated 10/28/2025 v.20.1

Earn rewards for product  
reviews and publications.

Submit a publication at [www.novusbio.com/publications](http://www.novusbio.com/publications)

Submit a review at [www.novusbio.com/reviews/destination/NBP1-92365](http://www.novusbio.com/reviews/destination/NBP1-92365)



**NBP1-92365**

SATB2 Antibody - BSA Free

**Product Information**

<b>Unit Size</b>	0.1 ml
<b>Concentration</b>	Concentrations vary lot to lot. See vial label for concentration. If unlisted please contact technical services.
<b>Storage</b>	Store at 4C short term. Aliquot and store at -20C long term. Avoid freeze-thaw cycles.
<b>Clonality</b>	Polyclonal
<b>Preservative</b>	0.02% Sodium Azide
<b>Isotype</b>	IgG
<b>Purity</b>	Immunogen affinity purified
<b>Buffer</b>	PBS (pH 7.2) and 40% Glycerol

**Product Description**

<b>Description</b>	Novus Biologicals Rabbit SATB2 Antibody - BSA Free (NBP1-92365) is a polyclonal antibody validated for use in IHC, WB and ICC/IF. Anti-SATB2 Antibody: Cited in 1 publication. All Novus Biologicals antibodies are covered by our 100% guarantee.
<b>Host</b>	Rabbit
<b>Gene ID</b>	23314
<b>Gene Symbol</b>	SATB2
<b>Species</b>	Human
<b>Immunogen</b>	This antibody was developed against Recombinant Protein corresponding to amino acids: KECPLSQSMISSIVNSTYYANVSATKCQEFGRWYKKYKKIKVERVERENLSDYC VLGQRPMHLPNMNQLASLGKTNEQSPHSQIHHSTPIRNQVPALQPIMSPGLLS PQLSPQLV

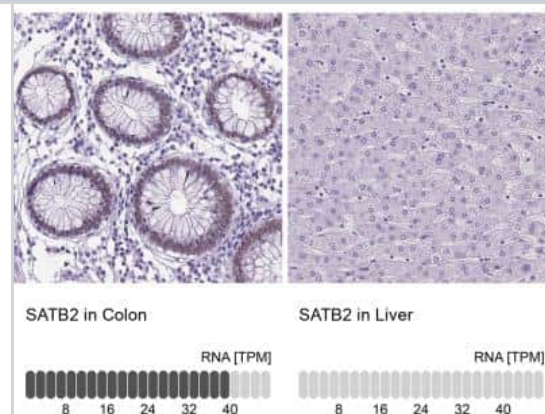
**Product Application Details**

<b>Applications</b>	Western Blot, Immunohistochemistry-Paraffin, Immunocytochemistry/Immunofluorescence, Immunohistochemistry
<b>Recommended Dilutions</b>	Western Blot 0.04-0.4 ug/ml, Immunohistochemistry 1:1000 - 1:2500, Immunocytochemistry/ Immunofluorescence 0.25-2 ug/ml, Immunohistochemistry-Paraffin 1:1000 - 1:2500
<b>Application Notes</b>	For IHC-Paraffin, HIER pH 6 retrieval is recommended. ICC/IF Fixation Permeabilization: Use PFA/Triton X-100.

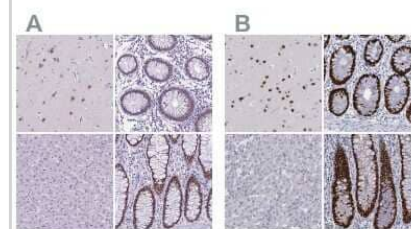


## Images

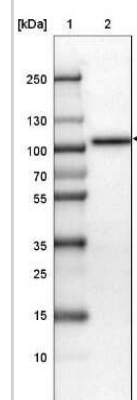
Immunohistochemistry-Paraffin: SATB2 Antibody [NBP1-92365] - Analysis in human colon and liver tissues. Corresponding SATB2 RNA-seq data are presented for the same tissues.



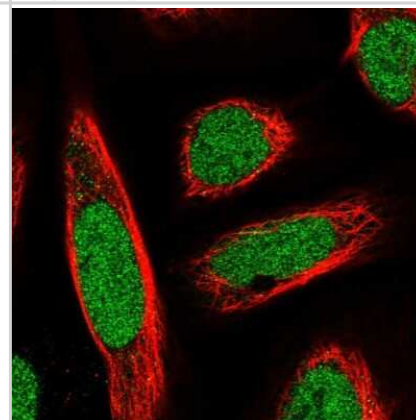
Immunohistochemistry-Paraffin: SATB2 Antibody [NBP1-92365] - Staining of human cerebral cortex, colon, liver and rectum using Anti-SATB2 antibody NBP1-92365 (A) shows similar protein distribution across tissues to independent antibody NBP1-83619 (B).



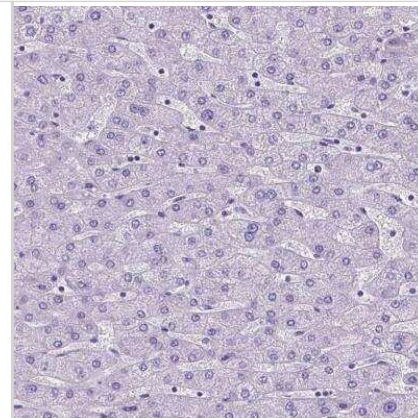
Western Blot: SATB2 Antibody [NBP1-92365] - Lane 1: Marker [kDa] 250, 130, 100, 70, 55, 35, 25, 15, 10. Lane 2: HELA



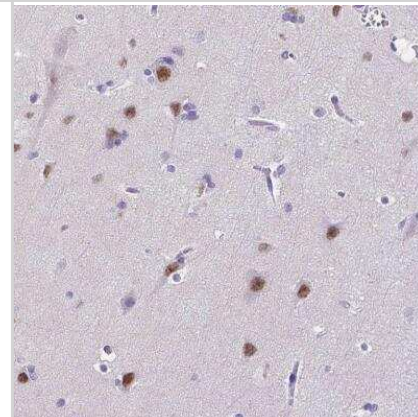
Immunocytochemistry/Immunofluorescence: SATB2 Antibody [NBP1-92365] - Staining of human cell line U-2 OS shows localization to nucleoplasm. Antibody staining is shown in green.



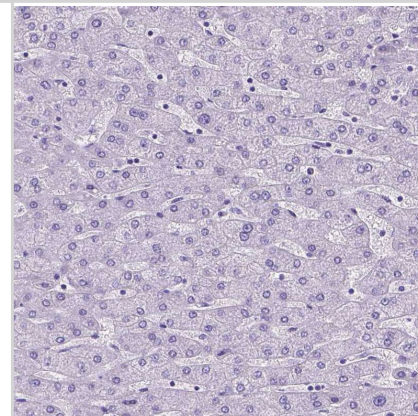
Immunohistochemistry-Paraffin: SATB2 Antibody [NBP1-92365] -  
Staining of human liver shows no positivity in hepatocytes as expected.



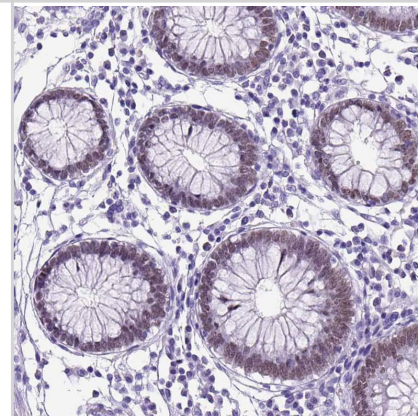
Immunohistochemistry-Paraffin: SATB2 Antibody [NBP1-92365] -  
Staining of human cerebral cortex shows moderate nuclear positivity in  
neurons.



Staining of human liver shows no positivity in hepatocytes as expected.

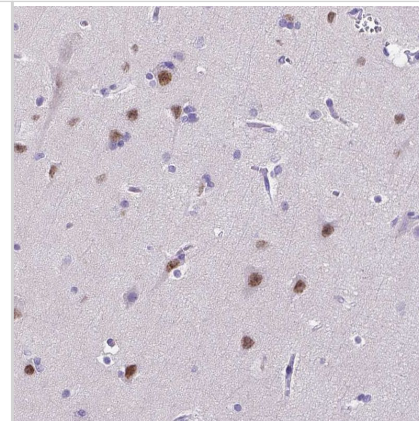


Staining of human colon shows strong nuclear positivity in glandular  
cells.

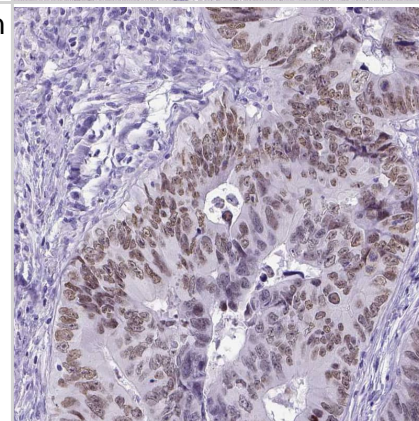




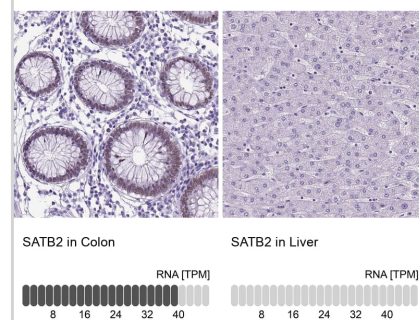
Staining of human cerebral cortex shows moderate nuclear positivity in neurons.



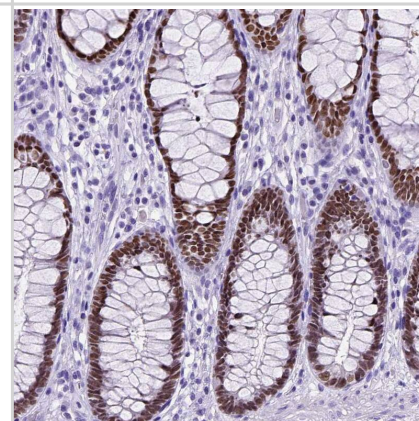
Staining of human colorectal cancer shows moderate nuclear positivity in tumor cells.



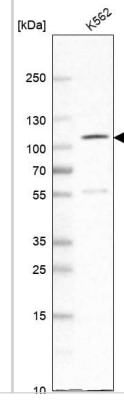
Analysis in human colon and liver tissues using NBP1-92365 antibody. Corresponding SATB2 RNA-seq data are presented for the same tissues.



Staining of human rectum shows strong nuclear positivity in glandular cells.



Analysis in human cell line K562.



## Publications

Nodin B, Johannesson H, Wangefjord S et al. Molecular correlates and prognostic significance of SATB1 expression in colorectal cancer. *Diagn Pathol* 2012-08-30 [PMID: 22935204]





### **Novus Biologicals USA**

10730 E. Briarwood Avenue  
Centennial, CO 80112  
USA  
Phone: 303.730.1950  
Toll Free: 1.888.506.6887  
Fax: 303.730.1966  
nb-customerservice@bio-techne.com

### **Bio-Techne Canada**

21 Canmotor Ave  
Toronto, ON M8Z 4E6  
Canada  
Phone: 905.827.6400  
Toll Free: 855.668.8722  
Fax: 905.827.6402  
canada.inquires@bio-techne.com

### **Bio-Techne Ltd**

19 Barton Lane  
Abingdon Science Park  
Abingdon, OX14 3NB, United Kingdom  
Phone: (44) (0) 1235 529449  
Free Phone: 0800 37 34 15  
Fax: (44) (0) 1235 533420  
info.EMEA@bio-techne.com

### **General Contact Information**

www.novusbio.com  
Technical Support: nb-technical@bio-techne.com  
Orders: nb-customerservice@bio-techne.com  
General: novus@novusbio.com

### **Products Related to NBP1-92365**

---

NBP1-92365PEP	SATB2 Recombinant Protein Antigen
HAF008	Goat anti-Rabbit IgG Secondary Antibody [HRP]
NB7160	Goat anti-Rabbit IgG (H+L) Secondary Antibody [HRP]
NBP2-24891	Rabbit IgG Isotype Control

---

### **Limitations**

This product is for research use only and is not approved for use in humans or in clinical diagnosis. Primary Antibodies are guaranteed for 1 year from date of receipt.

For more information on our 100% guarantee, please visit [www.novusbio.com/guarantee](http://www.novusbio.com/guarantee)

Earn gift cards/discounts by submitting a review: [www.novusbio.com/reviews/submit/NBP1-92365](http://www.novusbio.com/reviews/submit/NBP1-92365)

Earn gift cards/discounts by submitting a publication using this product:  
[www.novusbio.com/publications](http://www.novusbio.com/publications)

