

# Product Datasheet

## SGPP1 Antibody - BSA Free

### NBP1-91353

Unit Size: 100 ul

Store at 4C short term. Aliquot and store at -20C long term. Avoid freeze-thaw cycles.

[www.novusbio.com](http://www.novusbio.com)



[technical@novusbio.com](mailto:technical@novusbio.com)

#### Publications: 3

Protocols, Publications, Related Products, Reviews, Research Tools and Images at:  
[www.novusbio.com/NBP1-91353](http://www.novusbio.com/NBP1-91353)

Updated 2/21/2025 v.20.1

Earn rewards for product  
reviews and publications.

Submit a publication at [www.novusbio.com/publications](http://www.novusbio.com/publications)

Submit a review at [www.novusbio.com/reviews/destination/NBP1-91353](http://www.novusbio.com/reviews/destination/NBP1-91353)



**NBP1-91353**

SGPP1 Antibody - BSA Free

Product Information	
Unit Size	100 ul
Concentration	0.5 mg/ml
Storage	Store at 4C short term. Aliquot and store at -20C long term. Avoid freeze-thaw cycles.
Clonality	Polyclonal
Preservative	0.09% Sodium Azide
Isotype	IgG
Purity	Affinity purified
Buffer	PBS, 2% Sucrose

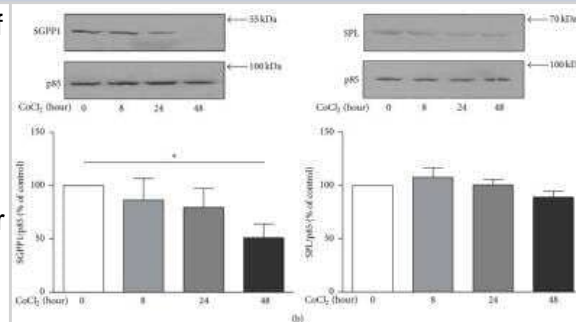
Product Description	
Description	The addition of 50% glycerol is optional for those storing this antibody at -20C and not aliquoting smaller units. However, please note that glycerol may interrupt some downstream antibody applications and should be added with caution.
Host	Rabbit
Gene ID	81537
Gene Symbol	SGPP1
Species	Human, Mouse
Reactivity Notes	Mouse reactivity reported in scientific literature (PMID: 25908616).
Immunogen	Synthetic peptide directed towards the middle region of human SGPP1. Peptide sequence THKYAPFIIIGLHLALGIFSFTLDTWSTSRGDTAEILGSGAGIACGSHVT. The peptide sequence for this immunogen was taken from within the described region.

Product Application Details	
Applications	Western Blot
Recommended Dilutions	Western Blot 1.0 ug/ml

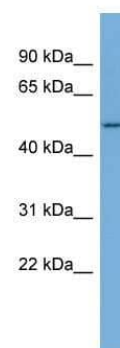


## Images

Western Blot: SGPP1 Antibody [NBP1-91353] - Differential expression of SGPP1 and SPL in normal FLS and RAFLS. Proteins from whole cell lysates were prepared for Western blot. Total PI3-kinase p85 subunit was used as a control for protein loading. Data presented are from a representative blot (upper panel) or the means  $\pm$  SE from three experiments (lower panel). For statistical comparative analyses, the samples stimulated with CoCl<sub>2</sub> at 0 h were compared to those treated for indicated times.  $p < 0.05$ . Image collected and cropped by CiteAb from the following publication (<https://www.hindawi.com/journals/mi/2015/436525/>) licensed under a CC-BY license.



Western Blot: SGPP1 Antibody [NBP1-91353] - Jurkat cell lysate, concentration 0.2-1 ug/ml.



## Publications

Bartłomiej Łukaszuk, Elżbieta Supruniuk, Adrian Chabowski, Agnieszka Mikłosz Adipose tissue place of origin and obesity influence sphingolipid signaling pathway in the adipocytes differentiated from ADMSCs isolated from morbidly obese women. *Biochemical pharmacology* 2024-03-21 [PMID: 38521475]

Zhao Chenqi, Moreno-Nieves Uriel, Di Battista John A et al. Chemical Hypoxia Brings to Light Altered Autocrine Sphingosine-1-Phosphate Signalling in Rheumatoid Arthritis Synovial Fibroblasts. *Mediators of Inflammation* 2015-01-01 [PMID: 26556954] (WB, Human)

Dulneva A, Lee S, Oliver PL et al. The mutant Moonwalker TRPC3 channel links calcium signaling to lipid metabolism in the developing cerebellum *Hum. Mol. Genet.* 2015-04-23 [PMID: 25908616] (WB, Mouse)



### **Novus Biologicals USA**

10730 E. Briarwood Avenue  
Centennial, CO 80112  
USA  
Phone: 303.730.1950  
Toll Free: 1.888.506.6887  
Fax: 303.730.1966  
nb-customerservice@bio-techne.com

### **Bio-Techne Canada**

21 Canmotor Ave  
Toronto, ON M8Z 4E6  
Canada  
Phone: 905.827.6400  
Toll Free: 855.668.8722  
Fax: 905.827.6402  
canada.inquires@bio-techne.com

### **Bio-Techne Ltd**

19 Barton Lane  
Abingdon Science Park  
Abingdon, OX14 3NB, United Kingdom  
Phone: (44) (0) 1235 529449  
Free Phone: 0800 37 34 15  
Fax: (44) (0) 1235 533420  
info.EMEA@bio-techne.com

### **General Contact Information**

[www.novusbio.com](http://www.novusbio.com)  
Technical Support: nb-technical@bio-techne.com  
Orders: nb-customerservice@bio-techne.com  
General: novus@novusbio.com

### **Products Related to NBP1-91353**

---

HAF008	Goat anti-Rabbit IgG Secondary Antibody [HRP]
NB7160	Goat anti-Rabbit IgG (H+L) Secondary Antibody [HRP]
NBP2-24891	Rabbit IgG Isotype Control
NBP2-76561PEP	SGPP1 Recombinant Protein Antigen

---

### **Limitations**

This product is for research use only and is not approved for use in humans or in clinical diagnosis. Primary Antibodies are guaranteed for 1 year from date of receipt.

For more information on our 100% guarantee, please visit [www.novusbio.com/guarantee](http://www.novusbio.com/guarantee)

Earn gift cards/discounts by submitting a review: [www.novusbio.com/reviews/submit/NBP1-91353](http://www.novusbio.com/reviews/submit/NBP1-91353)

Earn gift cards/discounts by submitting a publication using this product:  
[www.novusbio.com/publications](http://www.novusbio.com/publications)

