

Product Datasheet

Human Cathepsin L ELISA Kit (Colorimetric) NBP1-91259

Unit Size: 96 Tests

Storage of components varies. See protocol for specific instructions.

www.novusbio.com



technical@novusbio.com

Protocols, Publications, Related Products, Reviews, Research Tools and Images at:
www.novusbio.com/NBP1-91259

Updated 10/23/2024 v.20.1

Earn rewards for product
reviews and publications.

Submit a publication at www.novusbio.com/publications

Submit a review at www.novusbio.com/reviews/destination/NBP1-91259



NBP1-91259**Human Cathepsin L ELISA Kit (Colorimetric)**

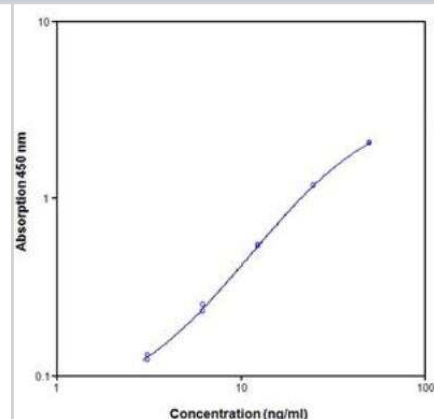
Product Information	
Unit Size	96 Tests
Concentration	Concentration is not relevant for this product. Please see the protocols for proper use of this product.
Storage	Storage of components varies. See protocol for specific instructions.

Product Description	
Description	The human Cathepsin L ELISA is an enzyme-linked immunosorbent assay for the quantitative detection of human Cathepsin L
Gene ID	1514
Gene Symbol	CTSL
Species	Human
Specificity/Sensitivity	The interference of circulating factors of the immune system was evaluated by spiking these proteins at physiologically relevant concentrations into a human Cathepsin L positive serum. No crossreactivity was detected, namely not with Cathepsin V (80% aa homology).
Kit Components	Wash Buffer Concentrate 20x (PBS with 1% Tween 20), Substrate Solution (tetramethyl-benzidine), Stop Solution (1M Phosphoric acid), Adhesive Films, Aluminium pouch(es) with a Microwell Plate coated with monoclonal antibody to human Cathepsin L, Biotin-Conjugate anti-human Cathepsin L monoclonal antibody, Streptavidin-HRP, Human Cathepsin L Standard lyophilized, 100 ng/ml upon reconstitution, Sample Diluent, Assay Buffer Concentrate 20x (PBS with 1% Tween 20 and 10% BSA)
Standard Curve Range	3.1 - 50 ng/mL
Sensitivity	1.7 ng/mL
Inter Assay	CV% < 6.20%
Intra Assay	CV% < 6.00%
Assay Type	Sandwich ELISA
Suitable Sample Type	Cell culture supernatant, serum
Sample Volume	50 uL

Product Application Details	
Applications	ELISA
Recommended Dilutions	ELISA

Images

Human Cathepsin L ELISA Kit [NBP1-91259] - Data for Human Cathepsin L Platinum ELISA





Novus Biologicals USA

10730 E. Briarwood Avenue
Centennial, CO 80112
USA

Phone: 303.730.1950

Toll Free: 1.888.506.6887

Fax: 303.730.1966

nb-customerservice@bio-techne.com

Bio-Techne Canada

21 Canmotor Ave
Toronto, ON M8Z 4E6
Canada

Phone: 905.827.6400

Toll Free: 855.668.8722

Fax: 905.827.6402

canada.inquires@bio-techne.com

Bio-Techne Ltd

19 Barton Lane
Abingdon Science Park
Abingdon, OX14 3NB, United Kingdom

Phone: (44) (0) 1235 529449

Free Phone: 0800 37 34 15

Fax: (44) (0) 1235 533420

info.EMEA@bio-techne.com

General Contact Information

www.novusbio.com

Technical Support: nb-technical@bio-techne.com

Orders: nb-customerservice@bio-techne.com

General: novus@novusbio.com

Products Related to NBP1-91259

NBP3-21333PEP	Cathepsin L Recombinant Protein Antigen
NBP1-78977	ASC/TMS1 Antibody - BSA Free
AF1515	Cathepsin L Antibody [Unconjugated]
AF965	Cathepsin B Antibody [Unconjugated]

Limitations

This product is for research use only and is not approved for use in humans or in clinical diagnosis. ELISA Kits are guaranteed for 6 months from date of receipt.

For more information on our 100% guarantee, please visit www.novusbio.com/guarantee

Earn gift cards/discounts by submitting a review: www.novusbio.com/reviews/submit/NBP1-91259

Earn gift cards/discounts by submitting a publication using this product:
www.novusbio.com/publications

