

Product Datasheet

LRH-1/NR5A2 Antibody NBP1-90048

Unit Size: 0.1 ml

Store at 4C short term. Aliquot and store at -20C long term. Avoid freeze-thaw cycles.

www.novusbio.com



technical@novusbio.com

Protocols, Publications, Related Products, Reviews, Research Tools and Images at:
www.novusbio.com/NBP1-90048

Updated 11/19/2022 v.20.1

Earn rewards for product
reviews and publications.

Submit a publication at www.novusbio.com/publications

Submit a review at www.novusbio.com/reviews/destination/NBP1-90048



NBP1-90048

LRH-1/NR5A2 Antibody

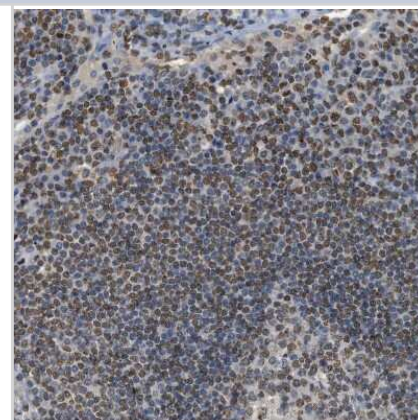
Product Information	
Unit Size	0.1 ml
Concentration	Concentrations vary lot to lot. See vial label for concentration. If unlisted please contact technical services.
Storage	Store at 4C short term. Aliquot and store at -20C long term. Avoid freeze-thaw cycles.
Clonality	Polyclonal
Preservative	0.02% Sodium Azide
Isotype	IgG
Purity	Immunogen affinity purified
Buffer	PBS (pH 7.2) and 40% Glycerol

Product Description	
Host	Rabbit
Gene ID	2494
Gene Symbol	NR5A2
Species	Human
Reactivity Notes	Immunogen displays the following percentage of sequence identity for non-tested species: Mouse (84%), Rat (85%)
Immunogen	This antibody was developed against Recombinant Protein corresponding to amino acids: RQVVHGKEGSIFLVTGQQVDYSIIASQAGATLNNLMSHAQELVAKLRSLQFDQ REFVCLKFLVLFSLDVKNLENFQLVEGVQEQVNAALLDYTMCNYPQQTEKFGQ LLLRLPEIRAISMQAEEYLYYKHLNGDVPYNNL

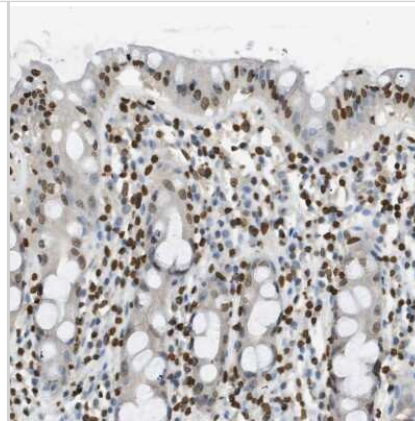
Product Application Details	
Applications	Immunohistochemistry, Immunohistochemistry-Paraffin
Recommended Dilutions	Immunohistochemistry 1:20 - 1:50, Immunohistochemistry-Paraffin 1:20 - 1:50
Application Notes	For IHC-Paraffin, HIER pH 6 retrieval is recommended.

Images

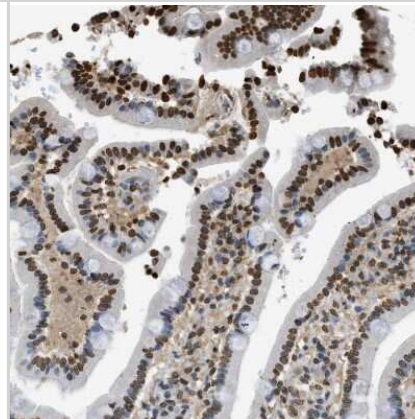
Immunohistochemistry-Paraffin: LRH-1/NR5A2 Antibody [NBP1-90048] - Staining of human Lymph node shows strong nuclear positivity in germinal and non-germinal center cells.



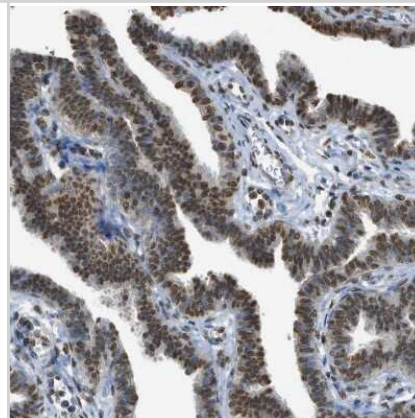
Immunohistochemistry-Paraffin: LRH-1/NR5A2 Antibody [NBP1-90048] - Staining of human rectum shows nuclear positivity in glandular cells.



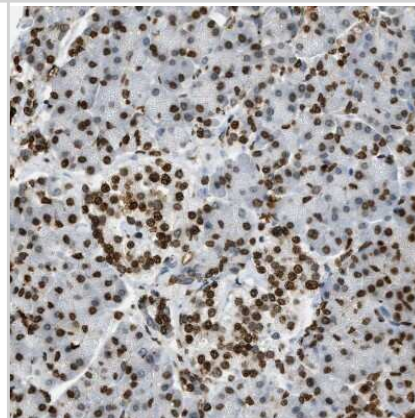
Immunohistochemistry-Paraffin: LRH-1/NR5A2 Antibody [NBP1-90048] - Staining of human Duodenum shows strong nuclear positivity in glandular cells.



Immunohistochemistry-Paraffin: LRH-1/NR5A2 Antibody [NBP1-90048] - Staining of human Fallopian tube shows strong nuclear positivity in glandular cells.



Immunohistochemistry-Paraffin: LRH-1/NR5A2 Antibody [NBP1-90048] - Staining of human Pancreas shows strong nuclear positivity in exocrine glandular cells and Islets of Langerhans.





Novus Biologicals USA

10730 E. Briarwood Avenue
Centennial, CO 80112
USA
Phone: 303.730.1950
Toll Free: 1.888.506.6887
Fax: 303.730.1966
nb-customerservice@bio-techne.com

Bio-Techne Canada

21 Canmotor Ave
Toronto, ON M8Z 4E6
Canada
Phone: 905.827.6400
Toll Free: 855.668.8722
Fax: 905.827.6402
canada.inquires@bio-techne.com

Bio-Techne Ltd

19 Barton Lane
Abingdon Science Park
Abingdon, OX14 3NB, United Kingdom
Phone: (44) (0) 1235 529449
Free Phone: 0800 37 34 15
Fax: (44) (0) 1235 533420
info.EMEA@bio-techne.com

General Contact Information

www.novusbio.com
Technical Support: nb-technical@bio-techne.com
Orders: nb-customerservice@bio-techne.com
General: novus@novusbio.com

Limitations

This product is for research use only and is not approved for use in humans or in clinical diagnosis. Primary Antibodies are guaranteed for 1 year from date of receipt.

For more information on our 100% guarantee, please visit www.novusbio.com/guarantee

Earn gift cards/discounts by submitting a review: www.novusbio.com/reviews/submit/NBP1-90048

Earn gift cards/discounts by submitting a publication using this product:
www.novusbio.com/publications

