

Product Datasheet

PSMA/FOLH1/NAALADase I Antibody - BSA Free NBP1-89822

Unit Size: 0.1 ml

Store at 4C short term. Aliquot and store at -20C long term. Avoid freeze-thaw cycles.

www.novusbio.com



technical@novusbio.com

Publications: 3

Protocols, Publications, Related Products, Reviews, Research Tools and Images at:
www.novusbio.com/NBP1-89822

Updated 10/1/2025 v.20.1

Earn rewards for product
reviews and publications.

Submit a publication at www.novusbio.com/publications

Submit a review at www.novusbio.com/reviews/destination/NBP1-89822



NBP1-89822**PSMA/FOLH1/NAALADase I Antibody - BSA Free****Product Information**

Unit Size	0.1 ml
Concentration	Concentrations vary lot to lot. See vial label for concentration. If unlisted please contact technical services.
Storage	Store at 4C short term. Aliquot and store at -20C long term. Avoid freeze-thaw cycles.
Clonality	Polyclonal
Preservative	0.02% Sodium Azide
Isotype	IgG
Purity	Immunogen affinity purified
Buffer	PBS (pH 7.2) and 40% Glycerol

Product Description

Description	Novus Biologicals Rabbit PSMA/FOLH1/NAALADase I Antibody - BSA Free (NBP1-89822) is a polyclonal antibody validated for use in IHC. Anti-PSMA/FOLH1/NAALADase I Antibody: Cited in 3 publications. All Novus Biologicals antibodies are covered by our 100% guarantee.
Host	Rabbit
Gene ID	2346
Gene Symbol	FOLH1
Species	Human, Rat
Reactivity Notes	Immunogen displays the following percentage of sequence identity for non-tested species: Mouse (86%) Use in Rat reported in scientific publication (PMID: 32451793).
Immunogen	This antibody was developed against Recombinant Protein corresponding to amino acids: ADYFAPGVKSYPDGWNLPGGGVQQRGNILNLNGAGDPLTPGYPAN EYAYRRGI AEAVGLPSIPVHPIGYYYDAQKLLEKMGG SAPPDSSWRGSLKVPYNVGP GFTGN F

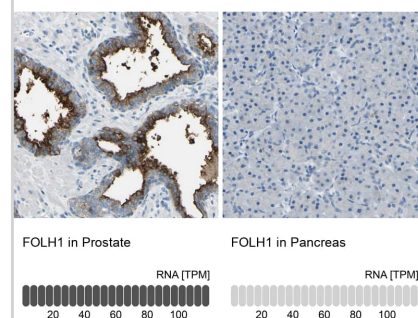
Product Application Details

Applications	Immunohistochemistry-Paraffin, Immunohistochemistry
Recommended Dilutions	Immunohistochemistry 1:200 - 1:500, Immunohistochemistry-Paraffin 1:200 - 1:500
Application Notes	Retrieval method: HIER pH6

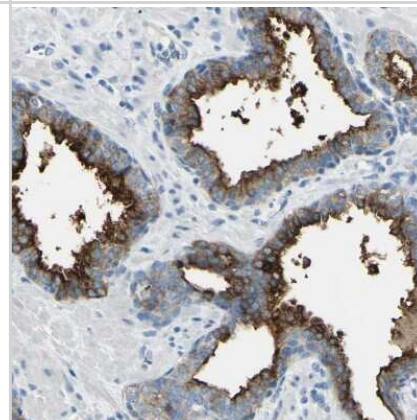


Images

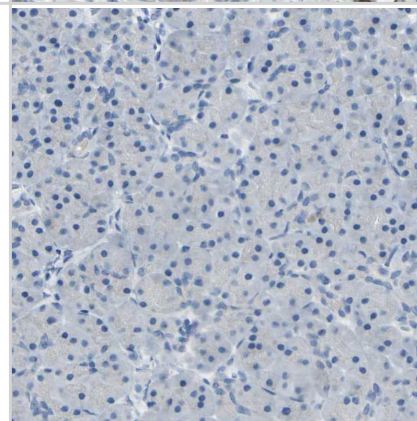
Analysis in human prostate and pancreas tissues using NBP1-89822 antibody. Corresponding FOLH1 RNA-seq data are presented for the same tissues.



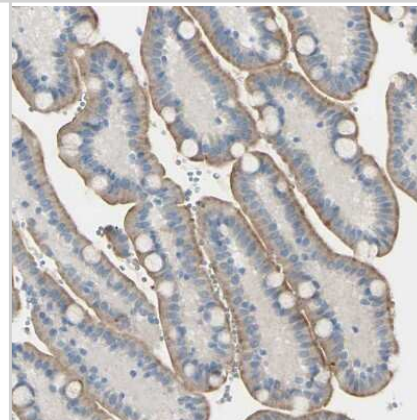
Immunohistochemistry-Paraffin: PSMA/FOLH1/NAALADase I Antibody [NBP1-89822] - Staining of human prostate shows strong positivity in apical membrane in glandular cells.



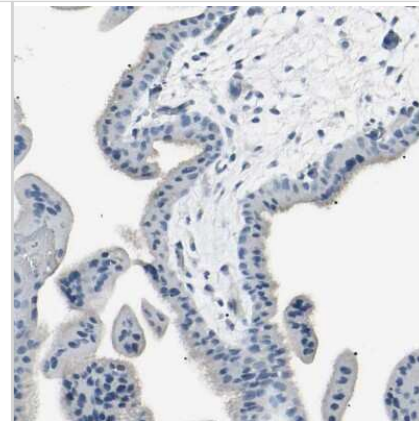
Staining of human pancreas shows no positivity in exocrine glandular cells as expected.



Immunohistochemistry-Paraffin: PSMA/FOLH1/NAALADase I Antibody [NBP1-89822] - Staining of human duodenum shows moderate positivity in apical membrane in glandular cells.



Immunohistochemistry-Paraffin: PSMA/FOLH1/NAALADase I Antibody [NBP1-89822] - Staining of human placenta shows no positivity in trophoblastic cells as expected.



Publications

Oliveira D, Stegmayr C, Heinzl A et al. High uptake of ^{68}Ga -PSMA and ^{18}F -DCFPyL in the peritumoral area of rat gliomas due to activated astrocytes EJNMMI Res 2020-05-25 [PMID: 32451793] (IF/IHC, Rat)

Hudson EP, Uhlen M, Rockberg J. Multiplex epitope mapping using bacterial surface display reveals both linear and conformational epitopes. Sci Rep 2012-01-01 [PMID: 23050090]

Jaraj SJ, Augsten M, Haggarth L et al. GAD1 is a biomarker for benign and malignant prostatic tissue. Scand J Urol Nephrol 2011-02-01 [PMID: 21091088]



Novus Biologicals USA

10730 E. Briarwood Avenue
Centennial, CO 80112
USA
Phone: 303.730.1950
Toll Free: 1.888.506.6887
Fax: 303.730.1966
nb-customerservice@bio-techne.com

Bio-Techne Canada

21 Canmotor Ave
Toronto, ON M8Z 4E6
Canada
Phone: 905.827.6400
Toll Free: 855.668.8722
Fax: 905.827.6402
canada.inquires@bio-techne.com

Bio-Techne Ltd

19 Barton Lane
Abingdon Science Park
Abingdon, OX14 3NB, United Kingdom
Phone: (44) (0) 1235 529449
Free Phone: 0800 37 34 15
Fax: (44) (0) 1235 533420
info.EMEA@bio-techne.com

General Contact Information

www.novusbio.com
Technical Support: nb-technical@bio-techne.com
Orders: nb-customerservice@bio-techne.com
General: novus@novusbio.com

Products Related to NBP1-89822

NBP1-89822PEP	PSMA/FOLH1/NAALADase I Recombinant Protein Antigen
HAF008	Goat anti-Rabbit IgG Secondary Antibody [HRP]
NB7160	Goat anti-Rabbit IgG (H+L) Secondary Antibody [HRP]
NBP2-24891	Rabbit IgG Isotype Control

Limitations

This product is for research use only and is not approved for use in humans or in clinical diagnosis. Primary Antibodies are guaranteed for 1 year from date of receipt.

For more information on our 100% guarantee, please visit www.novusbio.com/guarantee

Earn gift cards/discounts by submitting a review: www.novusbio.com/reviews/submit/NBP1-89822

Earn gift cards/discounts by submitting a publication using this product:
www.novusbio.com/publications

