

Product Datasheet

SLC1A5 Antibody - BSA Free

NBP1-89327

Unit Size: 0.1 ml

Store at 4C short term. Aliquot and store at -20C long term. Avoid freeze-thaw cycles.

www.novusbio.com



technical@novusbio.com

Reviews: 1 Publications: 5

Protocols, Publications, Related Products, Reviews, Research Tools and Images at:
www.novusbio.com/NBP1-89327

Updated 2/21/2025 v.20.1

Earn rewards for product reviews and publications.

Submit a publication at www.novusbio.com/publications

Submit a review at www.novusbio.com/reviews/destination/NBP1-89327



NBP1-89327

SLC1A5 Antibody - BSA Free

Product Information

Unit Size	0.1 ml
Concentration	Concentrations vary lot to lot. See vial label for concentration. If unlisted please contact technical services.
Storage	Store at 4C short term. Aliquot and store at -20C long term. Avoid freeze-thaw cycles.
Clonality	Polyclonal
Preservative	0.02% Sodium Azide
Isotype	IgG
Purity	Immunogen affinity purified
Buffer	PBS (pH 7.2) and 40% Glycerol

Product Description

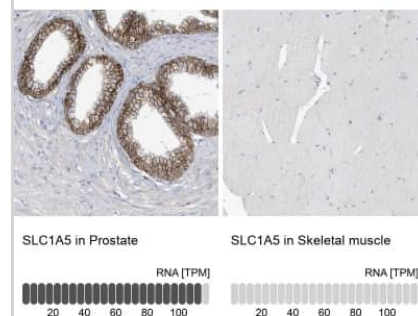
Host	Rabbit
Gene ID	6510
Gene Symbol	SLC1A5
Species	Human, Mouse, Porcine
Reactivity Notes	Use in Porcine reported in scientific literature (PMID:34488623). Mouse reactivity reported in scientific literature (PMID: 31387898).
Immunogen	This antibody was developed against Recombinant Protein corresponding to amino acids: VDRTESRSTEPELIQVKSELPLDPLVPVPTTEEGNPLLKHYRGPAGDATVASEKES VM

Product Application Details

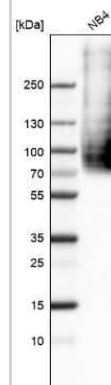
Applications	Western Blot, Immunocytochemistry/ Immunofluorescence, Immunohistochemistry, Immunohistochemistry-Paraffin
Recommended Dilutions	Western Blot 0.04-0.4 ug/ml, Immunohistochemistry 1:500 - 1:1000, Immunocytochemistry/ Immunofluorescence 0.25-2 ug/ml, Immunohistochemistry-Paraffin 1:500 - 1:1000
Application Notes	For IHC-Paraffin, HIER pH 6 retrieval is recommended. ICC/IF Fixation Permeabilization: Use PFA/Triton X-100.

Images

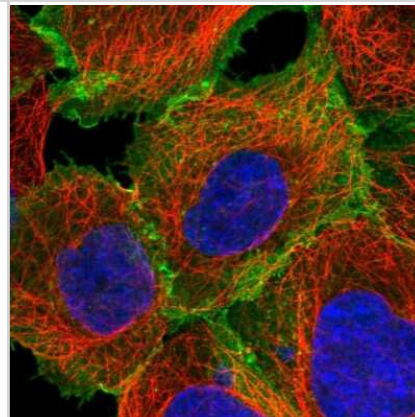
Immunohistochemistry-Paraffin: SLC1A5 Antibody [NBP1-89327] - Staining in human prostate and skeletal muscle tissues . Corresponding SLC1A5 RNA-seq data are presented for the same tissues.



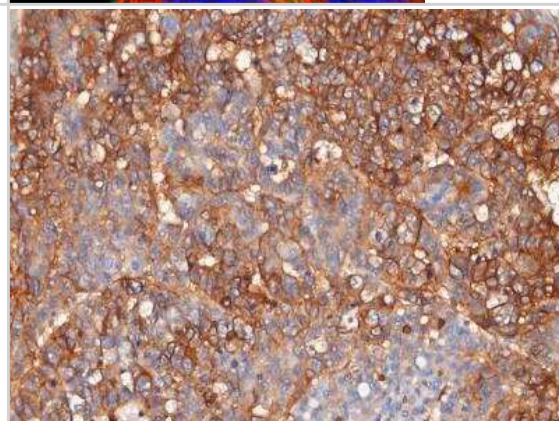
Western Blot: SLC1A5 Antibody [NBP1-89327] - Analysis in human cell line NB4.



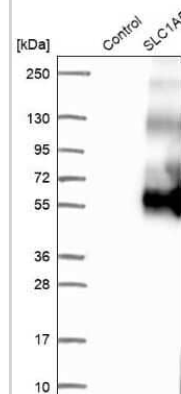
Immunocytochemistry/Immunofluorescence: SLC1A5 Antibody [NBP1-89327] - Staining of human cell line A-431 shows localization to plasma membrane. Antibody staining is shown in green.



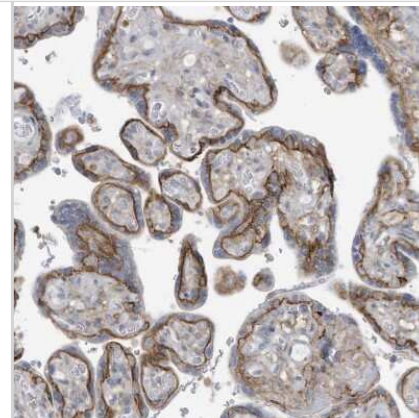
Immunohistochemistry-Paraffin: SLC1A5 Antibody [NBP1-89327] - Staining in human hepatocellular carcinoma. Image from a verified customer review.



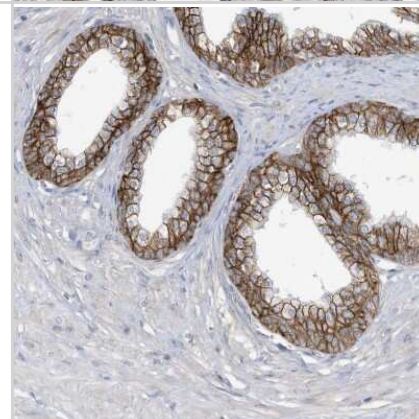
Western Blot: SLC1A5 Antibody [NBP1-89327] - Analysis in control (vector only transfected HEK293T lysate) and SLC1A5 over-expression lysate (Co-expressed with a C-terminal myc-DDK tag (3.1 kDa) in mammalian HEK293T cells).



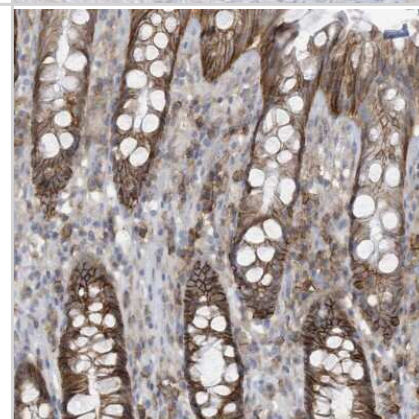
Immunohistochemistry-Paraffin: SLC1A5 Antibody [NBP1-89327] - Staining of human placenta shows strong membranous positivity in trophoblastic cells.



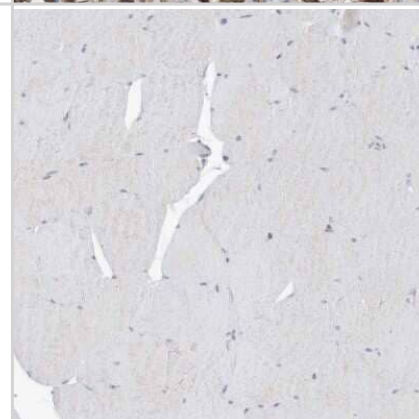
Immunohistochemistry-Paraffin: SLC1A5 Antibody [NBP1-89327] - Staining of human prostate shows strong membranous positivity in glandular cells.



Immunohistochemistry-Paraffin: SLC1A5 Antibody [NBP1-89327] - Staining of human rectum shows moderate to strong membranous positivity in glandular cells.



Immunohistochemistry-Paraffin: SLC1A5 Antibody [NBP1-89327] - Staining of human skeletal muscle shows no positivity in striated muscle fibers as expected.



Publications

Emmanuel Benichou, Bolaji Seffou, Selin Topçu, Ophélie Renoult, Véronique Lenoir, Julien Planchais, Caroline Bonner, Catherine Postic, Carina Prip-Buus, Claire Pecqueur, Sandra Guilmeau, Marie-Clotilde Alves-Guerra, Renaud Dentin The transcription factor ChREBP Orchestrates liver carcinogenesis by coordinating the PI3K/AKT signaling and cancer metabolism Nature Communications 2024-02-29 [PMID: 38424041]

Liu Y, Liu T, Zhou Y et al. Impeding the combination of astrocytic ASCT2 and NLRP3 by talniflumate alleviates neuroinflammation in experimental models of Parkinson's disease Acta Pharmaceutica Sinica B 2022-08-01 [PMID: 36873178] (ICC/IF, PLA, WB)

Romanet S, Aschenbach JR, Pieper R et al. Expression of proposed methionine transporters along the gastrointestinal tract of pigs and their regulation by dietary methionine sources Genes & nutrition 2021-09-06 [PMID: 34488623] (WB, Porcine)

Wu WC, Sun HW, Chen J et al. Immunosuppressive immature myeloid cell generation is controlled by glutamine metabolism in human cancer Cancer Immunol Res 2019-08-06 [PMID: 31387898] (IHC-P, ICC/IF, Mouse)

Sun HW, Yu XJ, Wu WC et al. GLUT1 and ASCT2 as Predictors for Prognosis of Hepatocellular Carcinoma. PLoS ONE. 2016-12-30 [PMID: 28036362] (IF/IHC, Human)





Novus Biologicals USA

10730 E. Briarwood Avenue
Centennial, CO 80112
USA
Phone: 303.730.1950
Toll Free: 1.888.506.6887
Fax: 303.730.1966
nb-customerservice@bio-techne.com

Bio-Techne Canada

21 Canmotor Ave
Toronto, ON M8Z 4E6
Canada
Phone: 905.827.6400
Toll Free: 855.668.8722
Fax: 905.827.6402
canada.inquires@bio-techne.com

Bio-Techne Ltd

19 Barton Lane
Abingdon Science Park
Abingdon, OX14 3NB, United Kingdom
Phone: (44) (0) 1235 529449
Free Phone: 0800 37 34 15
Fax: (44) (0) 1235 533420
info.EMEA@bio-techne.com

General Contact Information

www.novusbio.com
Technical Support: nb-technical@bio-techne.com
Orders: nb-customerservice@bio-techne.com
General: novus@novusbio.com

Products Related to NBP1-89327

NBP1-89327PEP	SLC1A5 Recombinant Protein Antigen
HAF008	Goat anti-Rabbit IgG Secondary Antibody [HRP]
NB7160	Goat anti-Rabbit IgG (H+L) Secondary Antibody [HRP]
NBP2-24891	Rabbit IgG Isotype Control

Limitations

This product is for research use only and is not approved for use in humans or in clinical diagnosis. Primary Antibodies are guaranteed for 1 year from date of receipt.

For more information on our 100% guarantee, please visit www.novusbio.com/guarantee

Earn gift cards/discounts by submitting a review: www.novusbio.com/reviews/submit/NBP1-89327

Earn gift cards/discounts by submitting a publication using this product:
www.novusbio.com/publications

