

# Product Datasheet

## MEF2D Antibody - BSA Free

### NBP1-85788

Unit Size: 0.1 ml

Store at 4C short term. Aliquot and store at -20C long term. Avoid freeze-thaw cycles.

[www.novusbio.com](http://www.novusbio.com)



[technical@novusbio.com](mailto:technical@novusbio.com)

Reviews: 2

Protocols, Publications, Related Products, Reviews, Research Tools and Images at:  
[www.novusbio.com/NBP1-85788](http://www.novusbio.com/NBP1-85788)

Updated 2/21/2025 v.20.1

Earn rewards for product reviews and publications.

Submit a publication at [www.novusbio.com/publications](http://www.novusbio.com/publications)

Submit a review at [www.novusbio.com/reviews/destination/NBP1-85788](http://www.novusbio.com/reviews/destination/NBP1-85788)



**NBP1-85788**

MEF2D Antibody - BSA Free

**Product Information**

<b>Unit Size</b>	0.1 ml
<b>Concentration</b>	Concentrations vary lot to lot. See vial label for concentration. If unlisted please contact technical services.
<b>Storage</b>	Store at 4C short term. Aliquot and store at -20C long term. Avoid freeze-thaw cycles.
<b>Clonality</b>	Polyclonal
<b>Preservative</b>	0.02% Sodium Azide
<b>Isotype</b>	IgG
<b>Purity</b>	Immunogen affinity purified
<b>Buffer</b>	PBS (pH 7.2) and 40% Glycerol

**Product Description**

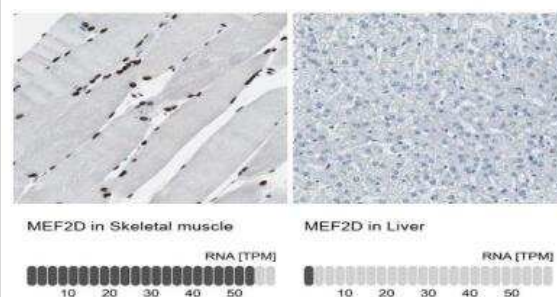
<b>Host</b>	Rabbit
<b>Gene ID</b>	4209
<b>Gene Symbol</b>	MEF2D
<b>Species</b>	Human, Mouse, Rat
<b>Immunogen</b>	This antibody was developed against Recombinant Protein corresponding to amino acids: QPQPPQQPPQPQQPQPQQPQQPQQPPQQSHLVPVSLSNLIPGSPLPHVG AALTVTTHPHISIKSEPVSPSRERSPPPPPAVFPAARPEPGDGLSSPAGGSYE TGDRDDGRGDFGPTLGLLRPAPEPEAEGS AVKRMRLDTWTL

**Product Application Details**

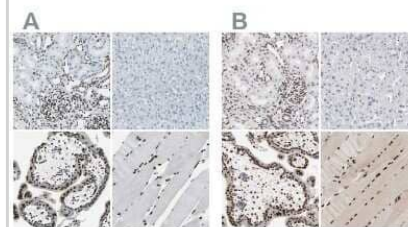
<b>Applications</b>	Western Blot, Simple Western, ELISA, Immunocytochemistry/ Immunofluorescence, Immunohistochemistry, Immunohistochemistry-Paraffin
<b>Recommended Dilutions</b>	Western Blot 0.04-0.4 ug/ml, Simple Western 1:50 - 1:1000, ELISA, Immunohistochemistry 1:50 - 1:200, Immunocytochemistry/ Immunofluorescence 0.25-2 ug/ml, Immunohistochemistry-Paraffin 1:50 - 1:200
<b>Application Notes</b>	For IHC-Paraffin, HIER pH 6 retrieval is recommended. ICC/IF Fixation Permeabilization: Use PFA/Triton X-100. MEF2D antibody validated for ELISA from a verified customer review. See <a href="#">Simple Western Antibody Database</a> for Simple Western validation: Mouse Brain lysate as sample; separated by size; antibody dilution of 1:50 - 1:1000; matrix was 12-230 kDa; detected by Chemiluminescence.

**Images**

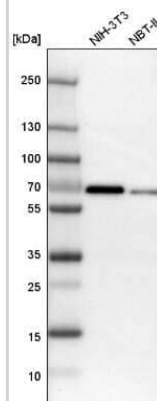
Immunohistochemistry-Paraffin: MEF2D Antibody [NBP1-85788] - Analysis in human skeletal muscle and liver tissues using NBP1-85788 antibody. Corresponding MEF2D RNA-seq data are presented for the same tissues.



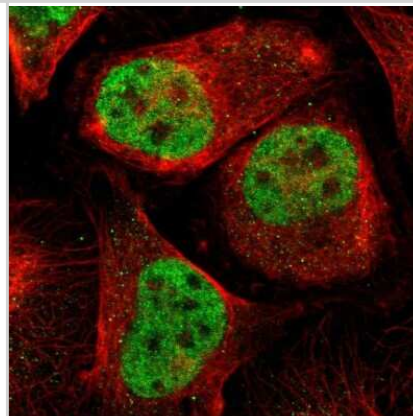
**Immunohistochemistry-Paraffin: MEF2D Antibody [NBP1-85788] -** Staining of human kidney, liver, placenta and skeletal muscle using Anti-MEF2D antibody NBP1-85788 (A) shows similar protein distribution across tissues to independent antibody NBP1-85795 (B).



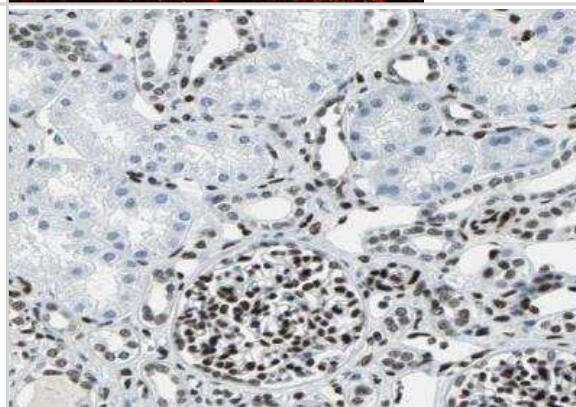
**Western Blot: MEF2D Antibody [NBP1-85788] -** Analysis in mouse cell line NIH-3T3 and rat cell line NBT-II.



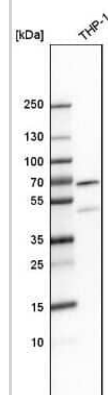
**Immunocytochemistry/Immunofluorescence: MEF2D Antibody [NBP1-85788] -** Immunofluorescent staining of human cell line U-2 OS shows localization to nucleoplasm. Antibody staining is shown in green.



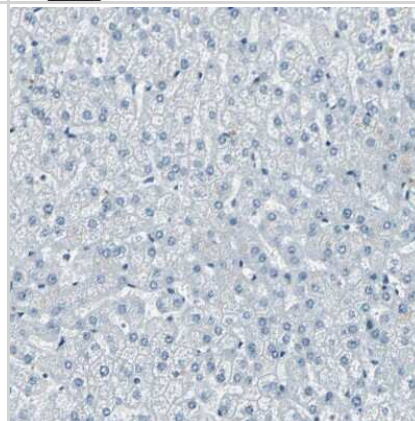
**Immunohistochemistry-Paraffin: MEF2D Antibody [NBP1-85788] -** Staining of human kidney shows strong nuclear positivity in cells in glomeruli.



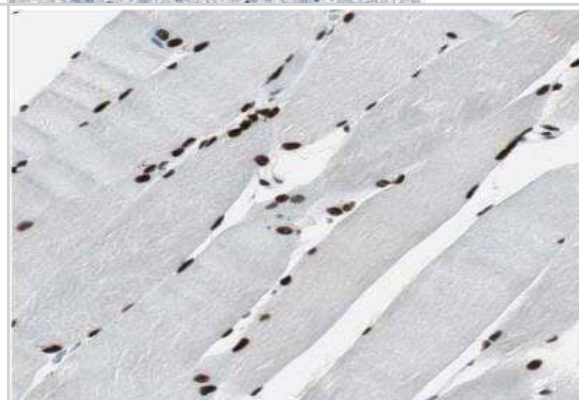
Western Blot: MEF2D Antibody [NBP1-85788] - Analysis in human cell line THP-1.



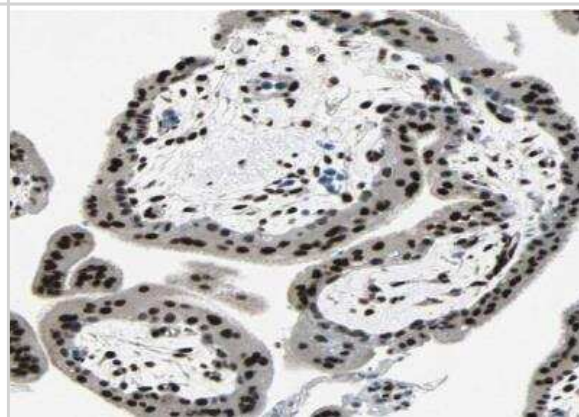
Immunohistochemistry-Paraffin: MEF2D Antibody [NBP1-85788] - Staining of human liver shows no positivity in hepatocytes as expected.



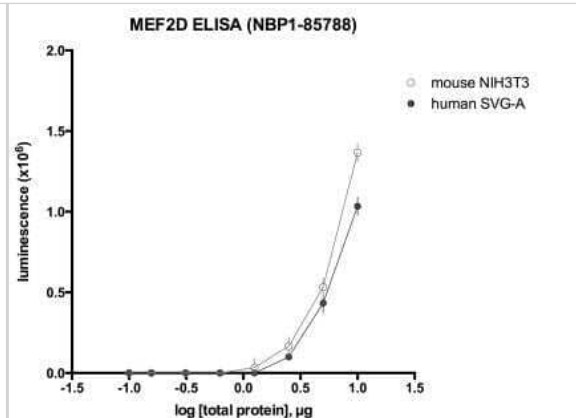
Immunohistochemistry-Paraffin: MEF2D Antibody [NBP1-85788] - Staining of human skeletal muscle shows strong nuclear positivity in myocytes.



Immunohistochemistry-Paraffin: MEF2D Antibody [NBP1-85788] - Staining of human placenta shows strong nuclear positivity in trophoblastic cells.



ELISA: MEF2D Antibody [NBP1-85788] - Lysates from NIH3T3 and SVG-A cells assessed by ELISA, loading the indicated mass of total protein per well. Antibody was diluted 1:250, and used in conjunction with an HRP-conjugated secondary antibody. Signal was detected by luminescence. Image from verified customer review.





### **Novus Biologicals USA**

10730 E. Briarwood Avenue  
Centennial, CO 80112  
USA  
Phone: 303.730.1950  
Toll Free: 1.888.506.6887  
Fax: 303.730.1966  
nb-customerservice@bio-techne.com

### **Bio-Techne Canada**

21 Canmotor Ave  
Toronto, ON M8Z 4E6  
Canada  
Phone: 905.827.6400  
Toll Free: 855.668.8722  
Fax: 905.827.6402  
canada.inquires@bio-techne.com

### **Bio-Techne Ltd**

19 Barton Lane  
Abingdon Science Park  
Abingdon, OX14 3NB, United Kingdom  
Phone: (44) (0) 1235 529449  
Free Phone: 0800 37 34 15  
Fax: (44) (0) 1235 533420  
info.EMEA@bio-techne.com

### **General Contact Information**

www.novusbio.com  
Technical Support: nb-technical@bio-techne.com  
Orders: nb-customerservice@bio-techne.com  
General: novus@novusbio.com

### **Products Related to NBP1-85788**

---

NBP1-85788PEP	MEF2D Recombinant Protein Antigen
HAF008	Goat anti-Rabbit IgG Secondary Antibody [HRP]
NB7160	Goat anti-Rabbit IgG (H+L) Secondary Antibody [HRP]
NBP2-24891	Rabbit IgG Isotype Control

---

### **Limitations**

This product is for research use only and is not approved for use in humans or in clinical diagnosis. Primary Antibodies are guaranteed for 1 year from date of receipt.

For more information on our 100% guarantee, please visit [www.novusbio.com/guarantee](http://www.novusbio.com/guarantee)

Earn gift cards/discounts by submitting a review: [www.novusbio.com/reviews/submit/NBP1-85788](http://www.novusbio.com/reviews/submit/NBP1-85788)

Earn gift cards/discounts by submitting a publication using this product:  
[www.novusbio.com/publications](http://www.novusbio.com/publications)

