

Product Datasheet

CRLF1 Antibody NBP1-85606

Unit Size: 0.1 ml

Store at 4C short term. Aliquot and store at -20C long term. Avoid freeze-thaw cycles.

www.novusbio.com



technical@novusbio.com

Publications: 2

Protocols, Publications, Related Products, Reviews, Research Tools and Images at:
www.novusbio.com/NBP1-85606

Updated 9/12/2023 v.20.1

Earn rewards for product
reviews and publications.

Submit a publication at www.novusbio.com/publications

Submit a review at www.novusbio.com/reviews/destination/NBP1-85606



NBP1-85606

CRLF1 Antibody

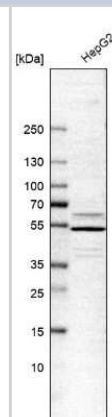
Product Information	
Unit Size	0.1 ml
Concentration	Concentrations vary lot to lot. See vial label for concentration. If unlisted please contact technical services.
Storage	Store at 4C short term. Aliquot and store at -20C long term. Avoid freeze-thaw cycles.
Clonality	Polyclonal
Preservative	0.02% Sodium Azide
Isotype	IgG
Purity	Immunogen affinity purified
Buffer	PBS (pH 7.2) and 40% Glycerol

Product Description	
Host	Rabbit
Gene ID	9244
Gene Symbol	CRLF1
Species	Human
Immunogen	This antibody was developed against Recombinant Protein corresponding to amino acids: VLTLDILDVVTTDPPPDVHVS RVGGLEDQLSVRWVSPALKDFLFQAKYQIRYR VEDSDWKVVDDVSNQTSCRLAGLKP GTVY

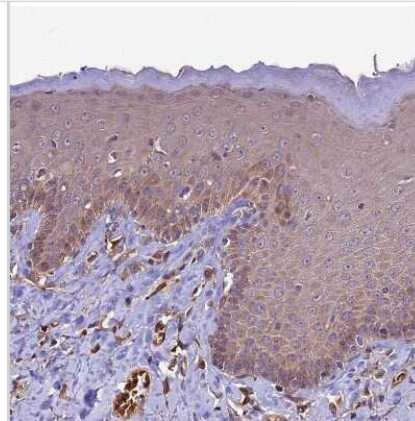
Product Application Details	
Applications	Western Blot, Immunohistochemistry, Immunohistochemistry-Paraffin
Recommended Dilutions	Western Blot 0.04-0.4 ug/ml, Immunohistochemistry 1:50 - 1:200, Immunohistochemistry-Paraffin 1:50 - 1:200
Application Notes	For IHC-Paraffin, HIER pH 6 retrieval is recommended.

Images

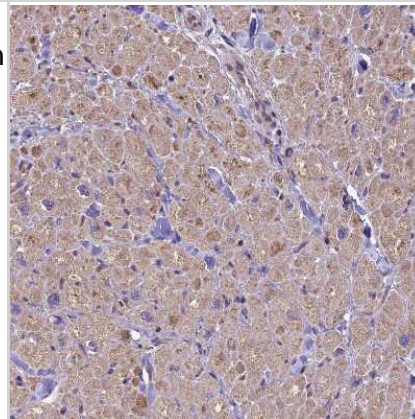
Western Blot: CRLF1 Antibody [NBP1-85606] - Analysis in human cell line HepG2.



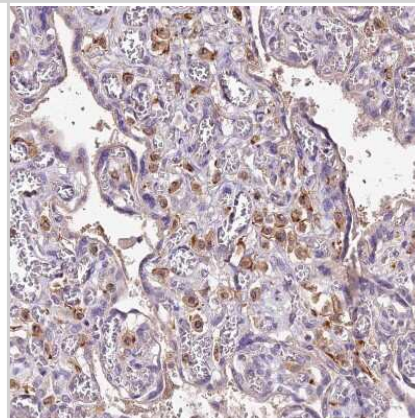
Immunohistochemistry-Paraffin: CRLF1 Antibody [NBP1-85606] - Staining of human skin shows weak cytoplasmic positivity in squamous epithelial cells.



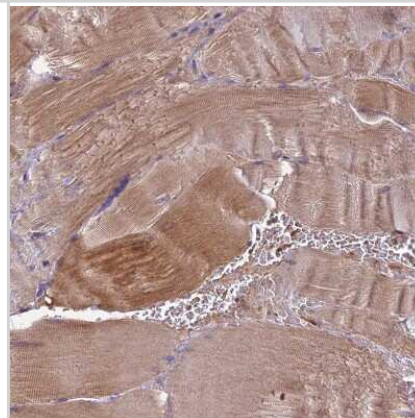
Immunohistochemistry-Paraffin: CRLF1 Antibody [NBP1-85606] - Staining of human heart muscle shows moderate cytoplasmic positivity in cardiomyocytes.



Immunohistochemistry-Paraffin: CRLF1 Antibody [NBP1-85606] - Staining of human placenta shows moderate cytoplasmic positivity in Hofbauer cells.



Immunohistochemistry-Paraffin: CRLF1 Antibody [NBP1-85606] - Staining of human skeletal muscle shows moderate cytoplasmic positivity in myocytes.



Publications

Nalbach K, Schifferer M, Bhattacharya D et al. Spatial proteomics reveals secretory pathway disturbances caused by neuropathy-associated TECPR2 Nature communications 2023-02-16 [PMID: 36797266] (WB, Human)

Nalbach K, Schifferer M, Lichtenthaler S et al. Spatial Proteomics Reveals Disturbances in Trafficking and Interactions Along the Secretory Pathway Upon Loss of Neuropathy-Associated TECPR4 SSRN Electronic Journal 2022-03-16 (WB, Human)



Novus Biologicals USA

10730 E. Briarwood Avenue
Centennial, CO 80112
USA

Phone: 303.730.1950

Toll Free: 1.888.506.6887

Fax: 303.730.1966

nb-customerservice@bio-techne.com

Bio-Techne Canada

21 Canmotor Ave
Toronto, ON M8Z 4E6
Canada

Phone: 905.827.6400

Toll Free: 855.668.8722

Fax: 905.827.6402

canada.inquires@bio-techne.com

Bio-Techne Ltd

19 Barton Lane
Abingdon Science Park
Abingdon, OX14 3NB, United Kingdom

Phone: (44) (0) 1235 529449

Free Phone: 0800 37 34 15

Fax: (44) (0) 1235 533420

info.EMEA@bio-techne.com

General Contact Information

www.novusbio.com

Technical Support: nb-technical@bio-techne.com

Orders: nb-customerservice@bio-techne.com

General: novus@novusbio.com

Limitations

This product is for research use only and is not approved for use in humans or in clinical diagnosis. Primary Antibodies are guaranteed for 1 year from date of receipt.

For more information on our 100% guarantee, please visit www.novusbio.com/guarantee

Earn gift cards/discounts by submitting a review: www.novusbio.com/reviews/submit/NBP1-85606

Earn gift cards/discounts by submitting a publication using this product:

www.novusbio.com/publications

