

Product Datasheet

CCDC6 Antibody - BSA Free

NBP1-85351

Unit Size: 0.1 ml

Store at 4C short term. Aliquot and store at -20C long term. Avoid freeze-thaw cycles.

www.novusbio.com



technical@novusbio.com

Protocols, Publications, Related Products, Reviews, Research Tools and Images at:
www.novusbio.com/NBP1-85351

Updated 2/21/2025 v.20.1

Earn rewards for product
reviews and publications.

Submit a publication at www.novusbio.com/publications

Submit a review at www.novusbio.com/reviews/destination/NBP1-85351



NBP1-85351

CCDC6 Antibody - BSA Free

Product Information

Unit Size	0.1 ml
Concentration	Concentrations vary lot to lot. See vial label for concentration. If unlisted please contact technical services.
Storage	Store at 4C short term. Aliquot and store at -20C long term. Avoid freeze-thaw cycles.
Clonality	Polyclonal
Preservative	0.02% Sodium Azide
Isotype	IgG
Purity	Immunogen affinity purified
Buffer	PBS (pH 7.2) and 40% Glycerol

Product Description

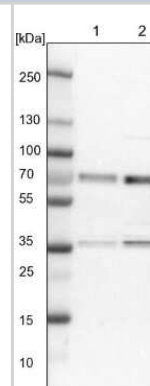
Host	Rabbit
Gene ID	8030
Gene Symbol	CCDC6
Species	Human, Mouse, Rat
Immunogen	This antibody was developed against Recombinant Protein corresponding to amino acids: FKKIQALQKEKETLAVNYEKEEEFLTNELSRKLMQLQHEKAELEQHLEQEQEFQ VNKLMKKIKKLENDTISKQLTLEQLRREKI

Product Application Details

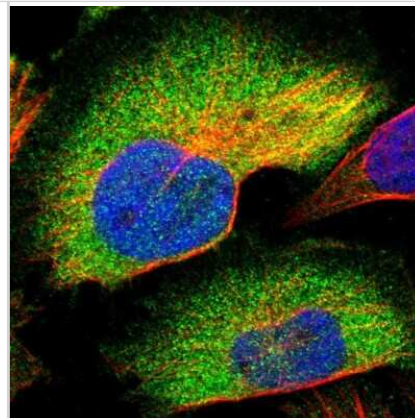
Applications	Western Blot, Immunocytochemistry/ Immunofluorescence, Immunohistochemistry, Immunohistochemistry-Paraffin
Recommended Dilutions	Western Blot 0.04-0.4 ug/ml, Immunohistochemistry 1:200 - 1:500, Immunocytochemistry/ Immunofluorescence 0.25-2 ug/ml, Immunohistochemistry-Paraffin 1:200 - 1:500
Application Notes	For IHC-Paraffin, HIER pH 6 retrieval is recommended. ICC/IF Fixation Permeabilization: Use PFA/Triton X-100.

Images

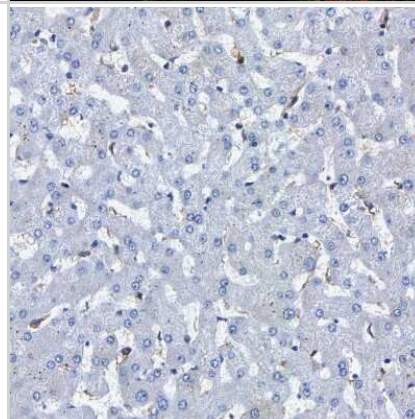
Western Blot: CCDC6 Antibody [NBP1-85351] - Lane 1: NIH-3T3 cell lysate (Mouse embryonic fibroblast cells). Lane 2: NBT-II cell lysate (Rat Wistar bladder tumor cells).



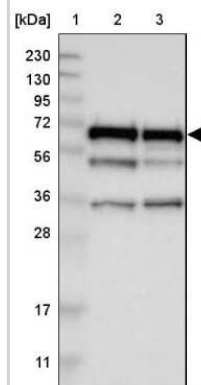
Immunocytochemistry/Immunofluorescence: CCDC6 Antibody [NBP1-85351] - Staining of human cell line U-251 MG shows localization to cytosol. Antibody staining is shown in green.



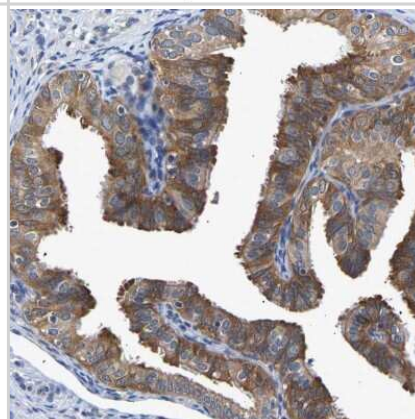
Immunohistochemistry-Paraffin: CCDC6 Antibody [NBP1-85351] - Staining of human liver shows no positivity in hepatocytes as expected.



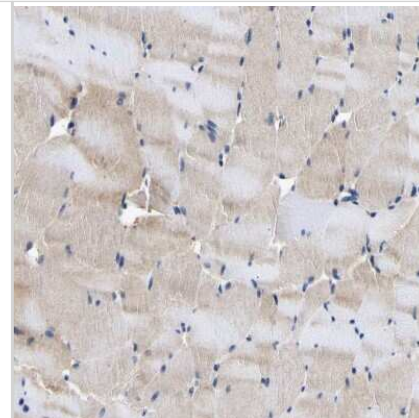
Western Blot: CCDC6 Antibody [NBP1-85351] - Lane 1: Marker [kDa] 230, 130, 95, 72, 56, 36, 28, 17, 11. Lane 2: Human cell line RT-4. Lane 3: Human cell line U-251MG sp



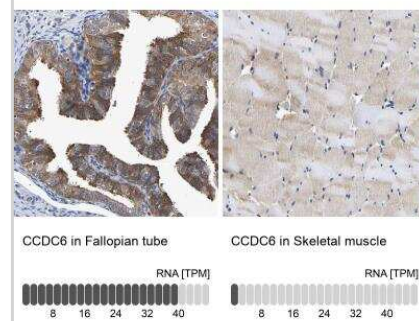
Immunohistochemistry-Paraffin: CCDC6 Antibody [NBP1-85351] - Staining of human fallopian tube shows high expression.



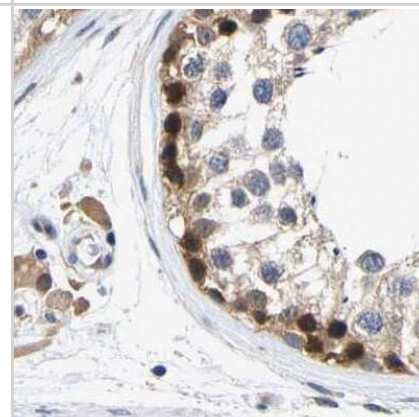
Immunohistochemistry-Paraffin: CCDC6 Antibody [NBP1-85351] - Staining of human skeletal muscle shows low expression as expected.



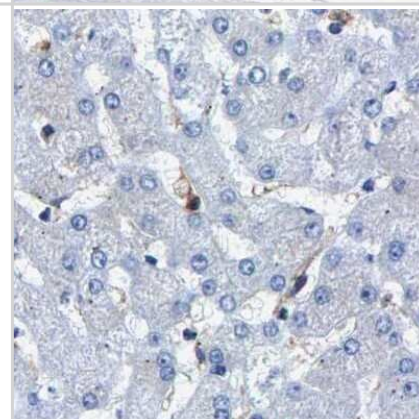
Immunohistochemistry-Paraffin: CCDC6 Antibody [NBP1-85351] - Staining in human fallopian tube and skeletal muscle tissues using anti-CCDC6 antibody. Corresponding CCDC6 RNA-seq data are presented for the same tissues.



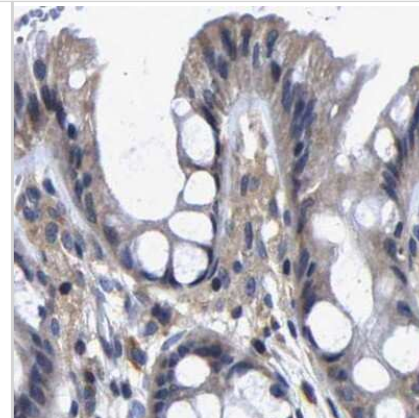
Immunohistochemistry-Paraffin: CCDC6 Antibody [NBP1-85351] - Staining of human testis.



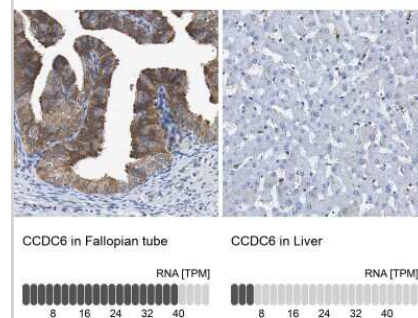
Immunohistochemistry-Paraffin: CCDC6 Antibody [NBP1-85351] - Staining of human liver.



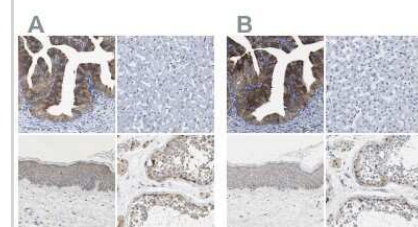
Immunohistochemistry-Paraffin: CCDC6 Antibody [NBP1-85351] - Staining of human colon.



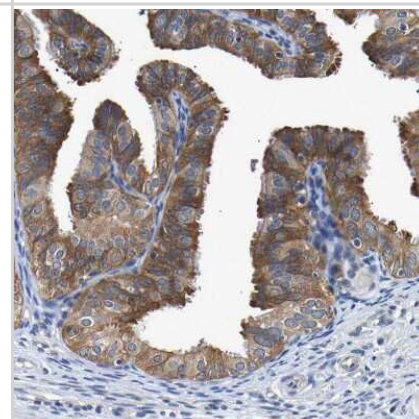
Immunohistochemistry-Paraffin: CCDC6 Antibody [NBP1-85351] - Analysis in human fallopian tube and liver tissues. Corresponding CCDC6 RNA-seq data are presented for the same tissues.



Immunohistochemistry-Paraffin: CCDC6 Antibody [NBP1-85351] - Staining of human fallopian tube, liver, skin and testis using Anti-CCDC6 antibody NBP1-85351 (A) shows similar protein distribution across tissues to independent antibody NBP1-85350 (B).



Immunohistochemistry-Paraffin: CCDC6 Antibody [NBP1-85351] - Staining of human Fallopian tube shows strong cytoplasmic positivity in glandular cells.





Novus Biologicals USA

10730 E. Briarwood Avenue
Centennial, CO 80112
USA
Phone: 303.730.1950
Toll Free: 1.888.506.6887
Fax: 303.730.1966
nb-customerservice@bio-techne.com

Bio-Techne Canada

21 Canmotor Ave
Toronto, ON M8Z 4E6
Canada
Phone: 905.827.6400
Toll Free: 855.668.8722
Fax: 905.827.6402
canada.inquires@bio-techne.com

Bio-Techne Ltd

19 Barton Lane
Abingdon Science Park
Abingdon, OX14 3NB, United Kingdom
Phone: (44) (0) 1235 529449
Free Phone: 0800 37 34 15
Fax: (44) (0) 1235 533420
info.EMEA@bio-techne.com

General Contact Information

www.novusbio.com
Technical Support: nb-technical@bio-techne.com
Orders: nb-customerservice@bio-techne.com
General: novus@novusbio.com

Products Related to NBP1-85351

NBP1-85351PEP	CCDC6 Recombinant Protein Antigen
HAF008	Goat anti-Rabbit IgG Secondary Antibody [HRP]
NB7160	Goat anti-Rabbit IgG (H+L) Secondary Antibody [HRP]
NBP2-24891	Rabbit IgG Isotype Control

Limitations

This product is for research use only and is not approved for use in humans or in clinical diagnosis. Primary Antibodies are guaranteed for 1 year from date of receipt.

For more information on our 100% guarantee, please visit www.novusbio.com/guarantee

Earn gift cards/discounts by submitting a review: www.novusbio.com/reviews/submit/NBP1-85351

Earn gift cards/discounts by submitting a publication using this product:
www.novusbio.com/publications

