

# Product Datasheet

## GPSM2 Antibody NBP1-85232

Unit Size: 0.1 ml

Store at 4C short term. Aliquot and store at -20C long term. Avoid freeze-thaw cycles.

[www.novusbio.com](http://www.novusbio.com)



[technical@novusbio.com](mailto:technical@novusbio.com)

### Publications: 2

Protocols, Publications, Related Products, Reviews, Research Tools and Images at:  
[www.novusbio.com/NBP1-85232](http://www.novusbio.com/NBP1-85232)

Updated 10/23/2023 v.20.1

Earn rewards for product  
reviews and publications.

Submit a publication at [www.novusbio.com/publications](http://www.novusbio.com/publications)

Submit a review at [www.novusbio.com/reviews/destination/NBP1-85232](http://www.novusbio.com/reviews/destination/NBP1-85232)



**NBP1-85232**

GPSM2 Antibody

**Product Information**

<b>Unit Size</b>	0.1 ml
<b>Concentration</b>	Concentrations vary lot to lot. See vial label for concentration. If unlisted please contact technical services.
<b>Storage</b>	Store at 4C short term. Aliquot and store at -20C long term. Avoid freeze-thaw cycles.
<b>Clonality</b>	Polyclonal
<b>Preservative</b>	0.02% Sodium Azide
<b>Isotype</b>	IgG
<b>Purity</b>	Immunogen affinity purified
<b>Buffer</b>	PBS (pH 7.2) and 40% Glycerol

**Product Description**

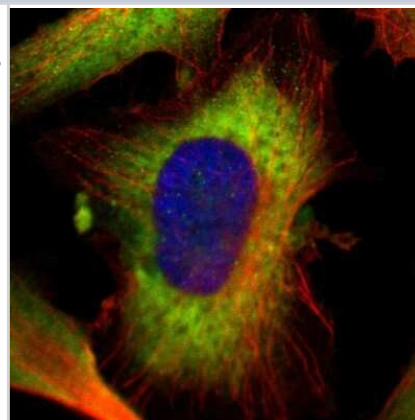
<b>Host</b>	Rabbit
<b>Gene ID</b>	29899
<b>Gene Symbol</b>	GPSM2
<b>Species</b>	Human
<b>Reactivity Notes</b>	Mouse (88%), Rat (81%). Reactivity reported in scientific literature (PMID: 23027904)
<b>Immunogen</b>	This antibody was developed against Recombinant Protein corresponding to amino acids: REVGDKSGELTARLNLSLDLQMVGLGSYSTNNSIMSENTEIDSSLNGVRPKLGR RHSMENMELMKLTPEKVQNWNSEILAKQKPLIAKPSAKLLFVNRLKGKKYKTN SSTKVLQDASNSIDHRIPNSQRKISADTIGDEGFFDL

**Product Application Details**

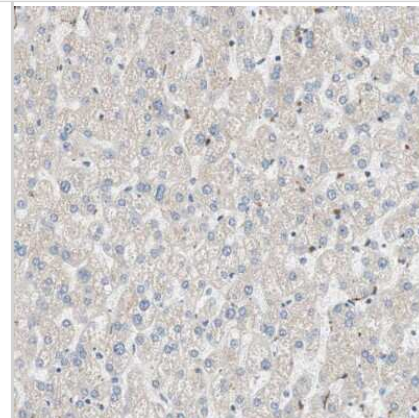
<b>Applications</b>	Immunocytochemistry/Immunofluorescence, Immunohistochemistry, Immunohistochemistry-Paraffin
<b>Recommended Dilutions</b>	Immunohistochemistry 1:500 - 1:1000, Immunocytochemistry/Immunofluorescence 0.25-2 ug/ml, Immunohistochemistry-Paraffin 1:500 - 1:1000
<b>Application Notes</b>	ICC/IF reported in scientific literature (PMID: 24996901). For IHC-Paraffin, HIER pH 6 retrieval is recommended. ICC/IF, Fixation Permeabilization: Use PFA/Triton X-100.

**Images**

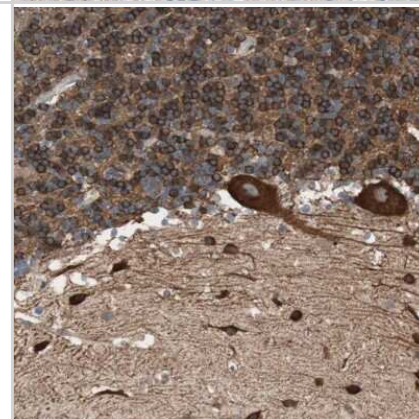
Immunocytochemistry/Immunofluorescence: GPSM2 Antibody [NBP1-85232] - Immunofluorescent staining of human cell line U-251 MG shows localization to cytosol.



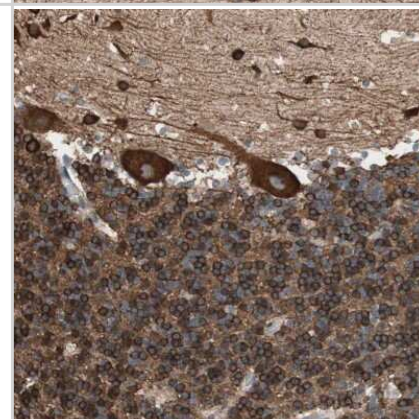
Immunohistochemistry-Paraffin: GPSM2 Antibody [NBP1-85232] -  
Staining of human liver shows no positivity in hepatocytes as expected.



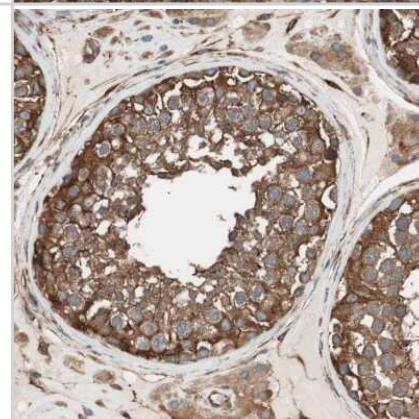
Immunohistochemistry-Paraffin: GPSM2 Antibody [NBP1-85232] -  
Staining of human cerebellum shows strong cytoplasmic positivity in  
Purkinje cells in molecular layer and granular layer.



Immunohistochemistry-Paraffin: GPSM2 Antibody [NBP1-85232] -  
Staining of human cerebellum shows strong cytoplasmic and  
membranous positivity in Purkinje cells as well as in cells in molecular  
and granular layer.



Immunohistochemistry-Paraffin: GPSM2 Antibody [NBP1-85232] -  
Staining of human testis shows strong cytoplasmic positivity in cells in  
seminiferous ducts.



## Publications

Kotak S, Busso C, Gonczy P. NuMA interacts with phosphoinositides and links the mitotic spindle with the plasma membrane. EMBO J 2014-08-18 [PMID: 24996901] (ICC/IF, Human)

Kotak S, Busso C, Gonczy P et al. Cortical dynein is critical for proper spindle positioning in human cells. J Cell Biol 2012-10-01 [PMID: 23027904]



### **Novus Biologicals USA**

10730 E. Briarwood Avenue  
Centennial, CO 80112  
USA

Phone: 303.730.1950

Toll Free: 1.888.506.6887

Fax: 303.730.1966

[nb-customerservice@bio-techne.com](mailto:nb-customerservice@bio-techne.com)

### **Bio-Techne Canada**

21 Canmotor Ave  
Toronto, ON M8Z 4E6  
Canada

Phone: 905.827.6400

Toll Free: 855.668.8722

Fax: 905.827.6402

[canada.inquires@bio-techne.com](mailto:canada.inquires@bio-techne.com)

### **Bio-Techne Ltd**

19 Barton Lane  
Abingdon Science Park  
Abingdon, OX14 3NB, United Kingdom

Phone: (44) (0) 1235 529449

Free Phone: 0800 37 34 15

Fax: (44) (0) 1235 533420

[info.EMEA@bio-techne.com](mailto:info.EMEA@bio-techne.com)

### **General Contact Information**

[www.novusbio.com](http://www.novusbio.com)

Technical Support: [nb-technical@bio-techne.com](mailto:nb-technical@bio-techne.com)

Orders: [nb-customerservice@bio-techne.com](mailto:nb-customerservice@bio-techne.com)

General: [novus@novusbio.com](mailto:novus@novusbio.com)

### **Limitations**

This product is for research use only and is not approved for use in humans or in clinical diagnosis. Primary Antibodies are guaranteed for 1 year from date of receipt.

For more information on our 100% guarantee, please visit [www.novusbio.com/guarantee](http://www.novusbio.com/guarantee)

Earn gift cards/discounts by submitting a review: [www.novusbio.com/reviews/submit/NBP1-85232](http://www.novusbio.com/reviews/submit/NBP1-85232)

Earn gift cards/discounts by submitting a publication using this product:  
[www.novusbio.com/publications](http://www.novusbio.com/publications)

