

Product Datasheet

Human L-Selectin/CD62L ELISA Kit (Colorimetric) NBP1-84821

Unit Size: 96 Tests

Storage of components varies. See protocol for specific instructions.

www.novusbio.com



technical@novusbio.com

Protocols, Publications, Related Products, Reviews, Research Tools and Images at:
www.novusbio.com/NBP1-84821

Updated 10/23/2024 v.20.1

Earn rewards for product
reviews and publications.

Submit a publication at www.novusbio.com/publications

Submit a review at www.novusbio.com/reviews/destination/NBP1-84821



NBP1-84821**Human L-Selectin/CD62L ELISA Kit (Colorimetric)**

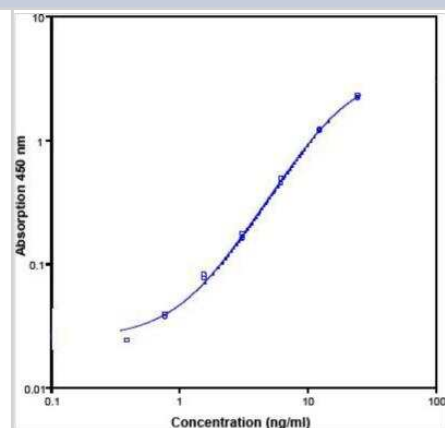
Product Information	
Unit Size	96 Tests
Concentration	Concentration is not relevant for this product. Please see the protocols for proper use of this product.
Storage	Storage of components varies. See protocol for specific instructions.

Product Description	
Description	The human sL-selectin ELISA is an enzyme-linked immunosorbent assay for the quantitative detection of human sL-selectin
Gene ID	6402
Gene Symbol	SELL
Species	Human
Specificity/Sensitivity	The assay detects both natural and recombinant human L-Selectin/CD62L. The interference of IL-8, ICAM-1, TNF-R, TNF alpha, TNF beta, CD8, IL-2, IL-2R, IL-6, IL-6R, IL-10, and E-selectin, CD44 and HER-2 was evaluated by spiking these proteins at physiologically relevant concentrations into a human L-Selectin/CD62L positive serum. There was no crossreactivity detected.
Kit Components	Aluminium pouch(es) with a Microwell Plate coated with antibody against human HGF, Biotin-Conjugate (anti-human HGF antibody), Streptavidin-HRP and Sample Diluent, lyophilized, Aluminium pouch(es) with a human HGF Standard curve (coloured), 1 bottle (25 ml) Wash Buffer Concentrate 20x
Standard Curve Range	0.4 - 25.0 ng/mL
Sensitivity	0.2 ng/mL
Inter Assay	CV% < 4.2%
Intra Assay	CV% < 3.7%
Assay Type	Sandwich ELISA
Spiking Recovery	99%
Suitable Sample Type	Cell culture supernatant, serum, plasma (EDTA, heparin)
Sample Volume	50 uL

Product Application Details	
Applications	ELISA
Recommended Dilutions	ELISA

Images

ELISA: Human L-Selectin/CD62L ELISA Kit (Colorimetric) [NBP1-84821]
- Standard curve





Novus Biologicals USA

10730 E. Briarwood Avenue
Centennial, CO 80112
USA
Phone: 303.730.1950
Toll Free: 1.888.506.6887
Fax: 303.730.1966
nb-customerservice@bio-techne.com

Bio-Techne Canada

21 Canmotor Ave
Toronto, ON M8Z 4E6
Canada
Phone: 905.827.6400
Toll Free: 855.668.8722
Fax: 905.827.6402
canada.inquires@bio-techne.com

Bio-Techne Ltd

19 Barton Lane
Abingdon Science Park
Abingdon, OX14 3NB, United Kingdom
Phone: (44) (0) 1235 529449
Free Phone: 0800 37 34 15
Fax: (44) (0) 1235 533420
info.EMEA@bio-techne.com

General Contact Information

www.novusbio.com
Technical Support: nb-technical@bio-techne.com
Orders: nb-customerservice@bio-techne.com
General: novus@novusbio.com

Products Related to NBP1-84821

NBP2-76545PEP	L-Selectin/CD62L Recombinant Protein Antigen
210-TA-005	TNF-alpha [Unconjugated]
BBA24	L-Selectin/CD62L Antibody (4G8) [Unconjugated]
6507-IL-010/CF	IL-4 [Unconjugated]

Limitations

This product is for research use only and is not approved for use in humans or in clinical diagnosis. ELISA Kits are guaranteed for 6 months from date of receipt.

For more information on our 100% guarantee, please visit www.novusbio.com/guarantee

Earn gift cards/discounts by submitting a review: www.novusbio.com/reviews/submit/NBP1-84821

Earn gift cards/discounts by submitting a publication using this product:
www.novusbio.com/publications

