

Product Datasheet

Human E-Selectin/CD62E ELISA Kit (Colorimetric) NBP1-84820

Unit Size: 96 Tests

Storage of components varies. See protocol for specific instructions.

www.novusbio.com



technical@novusbio.com

Protocols, Publications, Related Products, Reviews, Research Tools and Images at:
www.novusbio.com/NBP1-84820

Updated 5/9/2023 v.20.1

Earn rewards for product
reviews and publications.

Submit a publication at www.novusbio.com/publications

Submit a review at www.novusbio.com/reviews/destination/NBP1-84820



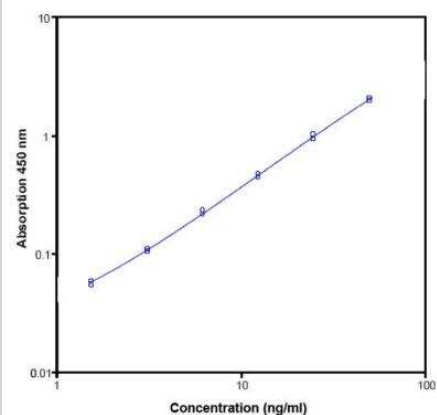
NBP1-84820**Human E-Selectin/CD62E ELISA Kit (Colorimetric)**

Product Information	
Unit Size	96 Tests
Concentration	Concentration is not relevant for this product. Please see the protocols for proper use of this product.
Storage	Storage of components varies. See protocol for specific instructions.
Product Description	
Gene ID	6401
Gene Symbol	SELE
Species	Human
Specificity/Sensitivity	This antibody targets the soluble protein. The assay detects both natural and recombinant human sE-selectin. The interference of circulating factors of the immune system was evaluated by spiking these proteins at physiologically relevant concentrations into a human sEselectin positive serum. There was no crossreactivity detected, namely not with IL-8, ICAM-1, TNF-R, TNF beta, CD8, IL-2R, IL-6, Lselectin and P-selectin.
Kit Components	Aluminium pouch(es) with a Microwell Plate coated with monoclonal antibody to human sE-selectin, HRP-Conjugate (human sE-selectin monoclonal antibody) and Sample Diluent, lyophilized, Aluminium pouch(es) with a human sE-selectin Standard curve (coloured), Wash Buffer Concentrate 20x (phosphate-buffered saline with 1% Tween 20), Sample Diluent (Use when an external predilution of the samples is needed), Substrate Solution (tetramethyl-benzidine), Stop Solution (1M Phosphoric acid), Lyophilized Control, Adhesive Films
Standard Curve Range	0.8 - 50 ng/mL
Sensitivity	0.3 ng/mL
Inter Assay	CV% < 6.0%
Intra Assay	CV% < 5.4%
Assay Type	Sandwich ELISA
Spiking Recovery	The amount of endogenous human sE-selectin in unspiked serum was subtracted from the spike values. The recovery ranged from 71% to 95% with an overall mean recovery of 86%.
Suitable Sample Type	Cell culture supernatant, serum, plasma (EDTA, citrate, heparin), buffered solution
Sample Volume	20 uL
Product Application Details	
Applications	ELISA
Recommended Dilutions	ELISA
Application Notes	This kit is an enzyme-linked immunosorbent assay for quantitative detection.



Images

ELISA: Human E-Selectin/CD62E ELISA Kit (Colorimetric) [NBP1-84820] - Representative standard curve for human sE-selectin ELISA. Human sE-selectin was diluted in serial 2-fold steps in Sample Diluent. Do not use this standard curve to derive test results. A standard curve must be run for each group of microwell strips assayed.





Novus Biologicals USA

10730 E. Briarwood Avenue
Centennial, CO 80112
USA
Phone: 303.730.1950
Toll Free: 1.888.506.6887
Fax: 303.730.1966
nb-customerservice@bio-techne.com

Bio-Techne Canada

21 Canmotor Ave
Toronto, ON M8Z 4E6
Canada
Phone: 905.827.6400
Toll Free: 855.668.8722
Fax: 905.827.6402
canada.inquires@bio-techne.com

Bio-Techne Ltd

19 Barton Lane
Abingdon Science Park
Abingdon, OX14 3NB, United Kingdom
Phone: (44) (0) 1235 529449
Free Phone: 0800 37 34 15
Fax: (44) (0) 1235 533420
info.EMEA@bio-techne.com

General Contact Information

www.novusbio.com
Technical Support: nb-technical@bio-techne.com
Orders: nb-customerservice@bio-techne.com
General: novus@novusbio.com

Limitations

This product is for research use only and is not approved for use in humans or in clinical diagnosis. ELISA Kits are guaranteed for 6 months from date of receipt.

For more information on our 100% guarantee, please visit www.novusbio.com/guarantee

Earn gift cards/discounts by submitting a review: www.novusbio.com/reviews/submit/NBP1-84820

Earn gift cards/discounts by submitting a publication using this product:
www.novusbio.com/publications

