

Product Datasheet

Human Serpin E1/PAI-1 ELISA Kit (Colorimetric) NBP1-83740

Unit Size: 96 Tests

Storage of components varies. See protocol for specific instructions.

www.novusbio.com



technical@novusbio.com

Protocols, Publications, Related Products, Reviews, Research Tools and Images at:
www.novusbio.com/NBP1-83740

Updated 10/23/2024 v.20.1

Earn rewards for product
reviews and publications.

Submit a publication at www.novusbio.com/publications

Submit a review at www.novusbio.com/reviews/destination/NBP1-83740



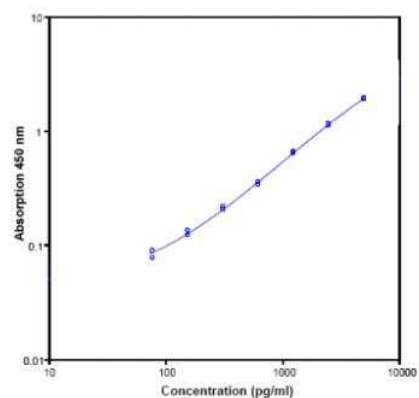
NBP1-83740**Human Serpin E1/PAI-1 ELISA Kit (Colorimetric)**

Product Information	
Unit Size	96 Tests
Concentration	Concentration is not relevant for this product. Please see the protocols for proper use of this product.
Storage	Storage of components varies. See protocol for specific instructions.
Product Description	
Description	This kit is an enzyme-linked immunosorbent assay for quantitative detection.
Gene ID	5054
Gene Symbol	SERPINE1
Species	Human
Specificity/Sensitivity	The interference of circulating factors of the immune system was evaluated by spiking these proteins at physiologically relevant concentrations into serum. There was no crossreactivity detected.
Kit Components	Aluminium pouch(es) with a Microwell Plate coated with monoclonal antibody to human PAI-1, Biotin-Conjugate anti-human PAI-1 polyclonal antibody, Streptavidin-HRP, Human PAI-1 Standard lyophilized, 10000 pg/mL upon reconstitution, Assay Buffer Concentrate 20x (PBS with 1% Tween 20 and 10% BSA), Wash Buffer Concentrate 20x (PBS with 1% Tween 20), Substrate Solution (tetramethyl-benzidine), Stop Solution (1M Phosphoric acid), Adhesive Films
Standard Curve Range	78 - 5,000 pg/mL
Sensitivity	29.0 pg/mL
Inter Assay	CV% < 5.0%
Intra Assay	CV% < 4.7%
Assay Type	Sandwich ELISA
Spiking Recovery	The recovery ranged from 64.5% to 84.8% with an overall mean recovery of 72.2% for serum and from 44.8% to 68.4% with an overall mean recovery of 58.7% for plasma samples.
Suitable Sample Type	Cell culture supernatant, serum, plasma (EDTA, citrate, heparin), buffered solution
Sample Volume	50 uL
Product Application Details	
Applications	ELISA
Recommended Dilutions	ELISA



Images

ELISA: Human Serpin E1/PAI-1 ELISA Kit (Colorimetric) [NBP1-83740] - Representative standard curve for human PAI-1 ELISA. Human PAI-1 was diluted in serial 2-fold steps in Assay Buffer (1x). Do not use this standard curve to derive test results. A standard curve must be run for each group of microwell strips assayed.





Novus Biologicals USA

10730 E. Briarwood Avenue
Centennial, CO 80112
USA
Phone: 303.730.1950
Toll Free: 1.888.506.6887
Fax: 303.730.1966
nb-customerservice@bio-techne.com

Bio-Techne Canada

21 Canmotor Ave
Toronto, ON M8Z 4E6
Canada
Phone: 905.827.6400
Toll Free: 855.668.8722
Fax: 905.827.6402
canada.inquires@bio-techne.com

Bio-Techne Ltd

19 Barton Lane
Abingdon Science Park
Abingdon, OX14 3NB, United Kingdom
Phone: (44) (0) 1235 529449
Free Phone: 0800 37 34 15
Fax: (44) (0) 1235 533420
info.EMEA@bio-techne.com

General Contact Information

www.novusbio.com
Technical Support: nb-technical@bio-techne.com
Orders: nb-customerservice@bio-techne.com
General: novus@novusbio.com

Products Related to NBP1-83740

NBP1-19773PEP	Serpin E1/PAI-1 Antibody Blocking Peptide
210-TA-005	TNF-alpha [Unconjugated]
NBP1-19773	Serpin E1/PAI-1 Antibody - BSA Free
M6000B-1	IL-6 [HRP]

Limitations

This product is for research use only and is not approved for use in humans or in clinical diagnosis. ELISA Kits are guaranteed for 6 months from date of receipt.

For more information on our 100% guarantee, please visit www.novusbio.com/guarantee

Earn gift cards/discounts by submitting a review: www.novusbio.com/reviews/submit/NBP1-83740

Earn gift cards/discounts by submitting a publication using this product:
www.novusbio.com/publications

