

Product Datasheet

Human VEGFR2/KDR/FIk-1 ELISA Kit (Colorimetric) NBP1-83729

Unit Size: 96 Tests

Storage of components varies. See protocol for specific instructions.

www.novusbio.com



technical@novusbio.com

Protocols, Publications, Related Products, Reviews, Research Tools and Images at:
www.novusbio.com/NBP1-83729

Updated 10/23/2024 v.20.1

Earn rewards for product
reviews and publications.

Submit a publication at www.novusbio.com/publications

Submit a review at www.novusbio.com/reviews/destination/NBP1-83729



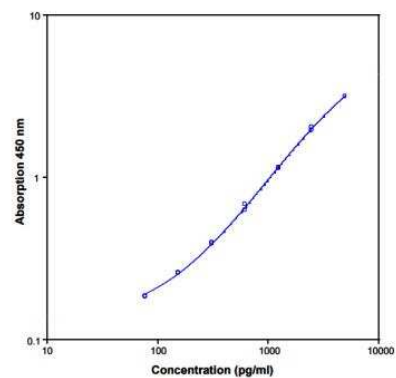
NBP1-83729**Human VEGFR2/KDR/FIk-1 ELISA Kit (Colorimetric)**

Product Information	
Unit Size	96 Tests
Concentration	Concentration is not relevant for this product. Please see the protocols for proper use of this product.
Storage	Storage of components varies. See protocol for specific instructions.
Product Description	
Description	The human VEGF-R2/KDR ELISA is an enzyme-linked immunosorbent assay for the quantitative detection of human VEGF-R2/KDR.
Gene ID	3791
Gene Symbol	KDR
Species	Human
Specificity/Sensitivity	The assay detects both natural and recombinant human VEGFR2/KDR/FIk-1. Cross reactivity and interference of circulating factors of the immune system was evaluated by spiking these proteins at physiologically relevant concentrations into a human VEGFR2/KDR/FIk-1 positive sample. There was no cross reactivity detected, notably not with VEGF-R1 at physiological concentrations and not with VEGF-R3/FLT-4. There was no interference detected, notably not for VEGF-A and VEGF-C.
Kit Components	Aluminium pouch(es) with a Microwell Plate coated with monoclonal antibody to human VEGF-R2/KDR, Biotin-Conjugate anti-human VEGF-R2/KDR monoclonal antibody, Streptavidin-HRP, Human VEGF-R2/KDR Standard lyophilized, 10 ng/mL upon reconstitution, Assay Buffer Concentrate 20x (PBS with 1% Tween 20 and 10% BSA), Wash Buffer Concentrate 20x (PBS with 1% Tween 20), Substrate Solution (tetramethyl-benzidine), Stop Solution (1M Phosphoric acid), Adhesive Films
Standard Curve Range	78 - 5000 pg/mL
Sensitivity	7.0 pg/mL
Inter Assay	CV% < 9.8%
Intra Assay	CV% < 5.3%
Assay Type	Sandwich ELISA
Spiking Recovery	Refer to manual
Suitable Sample Type	Cell culture supernatant, serum, plasma (EDTA, citrate, heparin), buffered solution
Sample Volume	50 uL (prediluted 1:25)
Product Application Details	
Applications	ELISA
Recommended Dilutions	ELISA



Images

ELISA: VEGF R2/KDR/FIk-1 ELISA Kit [NBP1-83729] - Standard curve





Novus Biologicals USA

10730 E. Briarwood Avenue
Centennial, CO 80112
USA
Phone: 303.730.1950
Toll Free: 1.888.506.6887
Fax: 303.730.1966
nb-customerservice@bio-techne.com

Bio-Techne Canada

21 Canmotor Ave
Toronto, ON M8Z 4E6
Canada
Phone: 905.827.6400
Toll Free: 855.668.8722
Fax: 905.827.6402
canada.inquires@bio-techne.com

Bio-Techne Ltd

19 Barton Lane
Abingdon Science Park
Abingdon, OX14 3NB, United Kingdom
Phone: (44) (0) 1235 529449
Free Phone: 0800 37 34 15
Fax: (44) (0) 1235 533420
info.EMEA@bio-techne.com

General Contact Information

www.novusbio.com
Technical Support: nb-technical@bio-techne.com
Orders: nb-customerservice@bio-techne.com
General: novus@novusbio.com

Products Related to NBP1-83729

NB100-530PEP	VEGFR2/KDR/Flk-1 Antibody Blocking Peptide
DVE00	VEGF [HRP]
AF644	VEGFR2/KDR/Flk-1 Antibody [Unconjugated]
233-FB-025	FGF basic/FGF2/bFGF [Unconjugated]

Limitations

This product is for research use only and is not approved for use in humans or in clinical diagnosis. ELISA Kits are guaranteed for 6 months from date of receipt.

For more information on our 100% guarantee, please visit www.novusbio.com/guarantee

Earn gift cards/discounts by submitting a review: www.novusbio.com/reviews/submit/NBP1-83729

Earn gift cards/discounts by submitting a publication using this product:
www.novusbio.com/publications

