

# Product Datasheet

## PA28 Activator alpha Subunit/PSME1 Antibody - BSA Free NBP1-83121

Unit Size: 0.1 ml

Store at 4C short term. Aliquot and store at -20C long term. Avoid freeze-thaw cycles.

[www.novusbio.com](http://www.novusbio.com)



[technical@novusbio.com](mailto:technical@novusbio.com)

### Publications: 4

Protocols, Publications, Related Products, Reviews, Research Tools and Images at:  
[www.novusbio.com/NBP1-83121](http://www.novusbio.com/NBP1-83121)

Updated 2/21/2025 v.20.1

Earn rewards for product  
reviews and publications.

Submit a publication at [www.novusbio.com/publications](http://www.novusbio.com/publications)

Submit a review at [www.novusbio.com/reviews/destination/NBP1-83121](http://www.novusbio.com/reviews/destination/NBP1-83121)



**NBP1-83121**

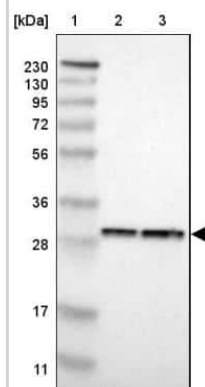
PA28 Activator alpha Subunit/PSME1 Antibody - BSA Free

Product Information	
Unit Size	0.1 ml
Concentration	Concentrations vary lot to lot. See vial label for concentration. If unlisted please contact technical services.
Storage	Store at 4C short term. Aliquot and store at -20C long term. Avoid freeze-thaw cycles.
Clonality	Polyclonal
Preservative	0.02% Sodium Azide
Isotype	IgG
Purity	Immunogen affinity purified
Buffer	PBS (pH 7.2) and 40% Glycerol
Product Description	
Host	Rabbit
Gene ID	5720
Gene Symbol	PSME1
Species	Human
Immunogen	This antibody was developed against Recombinant Protein corresponding to amino acids: AVQEKVFELMTSLHTKLEGFHTQISKYFSERGDAVTAAKQPHVGDYRQLVHE LDEAEYRDIRLMVMEIRNAYAVLYDIILKNFEKLKKPRGETKGMIIY
Product Application Details	
Applications	Western Blot, Simple Western, Immunohistochemistry, Immunohistochemistry-Paraffin
Recommended Dilutions	Western Blot 0.04-0.4 ug/ml, Simple Western 1:50, Immunohistochemistry 1:1000 - 1:2500, Immunohistochemistry-Paraffin 1:1000 - 1:2500
Application Notes	IHC reported in scientific literature (PMID: 25918340). For IHC-Paraffin, HIER pH 6 retrieval is recommended. See <a href="#">Simple Western Antibody Database</a> for Simple Western validation: Human Multiple Myeloma as sample; separated by size; antibody dilution of 1:50; observed molecular weight was 37 kDa; detected by Chemiluminescence.

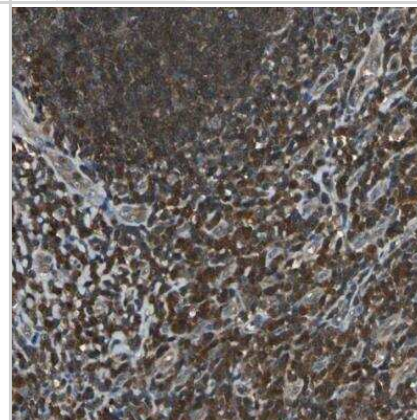


## Images

Western Blot: PA28 Activator alpha Subunit/PSME1 Antibody [NBP1-83121] - Lane 1: Marker [kDa] 230, 130, 95, 72, 56, 36, 28, 17, 11. Lane 2: Human cell line RT-4. Lane 3: Human cell line U-251MG sp



Immunohistochemistry-Paraffin: PA28 Activator alpha Subunit/PSME1 Antibody [NBP1-83121] - Staining of human tonsil shows strong cytoplasmic positivity in germinal and non-germinal center cells.



## Publications

Mamrosh JL, Sherman DJ, Cohen JR et al. Quantitative measurement of the requirement of diverse protein degradation pathways in MHC class I peptide presentation Science advances 2023-06-23 [PMID: 37352349] (WB, Human)

Misiewicz-Krzeminska, I, de Ramon, C Et al. Quantitative expression of Ikaros, IRF4, and PSMD10 proteins predicts survival in VRD-treated patients with multiple myeloma. Blood Adv 2020-12-08 [PMID: 33284947] (WB, Human)

Artyomov MN, Munk A, Gorvel L et al. Modular expression analysis reveals functional conservation between human Langerhans cells and mouse cross-priming dendritic cells J. Exp. Med. 2015-04-27 [PMID: 25918340] (IF/IHC, Human)

Kamper P, Ludvigsen M, Bendix K et al. Proteomic analysis identifies galectin-1 as a predictive biomarker for relapsed/refractory disease in classical Hodgkin lymphoma. Blood 2011-06-01 [PMID: 21505194]



### **Novus Biologicals USA**

10730 E. Briarwood Avenue  
Centennial, CO 80112  
USA  
Phone: 303.730.1950  
Toll Free: 1.888.506.6887  
Fax: 303.730.1966  
nb-customerservice@bio-techne.com

### **Bio-Techne Canada**

21 Canmotor Ave  
Toronto, ON M8Z 4E6  
Canada  
Phone: 905.827.6400  
Toll Free: 855.668.8722  
Fax: 905.827.6402  
canada.inquires@bio-techne.com

### **Bio-Techne Ltd**

19 Barton Lane  
Abingdon Science Park  
Abingdon, OX14 3NB, United Kingdom  
Phone: (44) (0) 1235 529449  
Free Phone: 0800 37 34 15  
Fax: (44) (0) 1235 533420  
info.EMEA@bio-techne.com

### **General Contact Information**

www.novusbio.com  
Technical Support: nb-technical@bio-techne.com  
Orders: nb-customerservice@bio-techne.com  
General: novus@novusbio.com

### **Products Related to NBP1-83121**

---

NBP1-83121PEP	PA28 Activator alpha Subunit/PSME1 Recombinant Protein Antigen
HAF008	Goat anti-Rabbit IgG Secondary Antibody [HRP]
NB7160	Goat anti-Rabbit IgG (H+L) Secondary Antibody [HRP]
NBP2-24891	Rabbit IgG Isotype Control

---

### **Limitations**

This product is for research use only and is not approved for use in humans or in clinical diagnosis. Primary Antibodies are guaranteed for 1 year from date of receipt.

For more information on our 100% guarantee, please visit [www.novusbio.com/guarantee](http://www.novusbio.com/guarantee)

Earn gift cards/discounts by submitting a review: [www.novusbio.com/reviews/submit/NBP1-83121](http://www.novusbio.com/reviews/submit/NBP1-83121)

Earn gift cards/discounts by submitting a publication using this product:  
[www.novusbio.com/publications](http://www.novusbio.com/publications)

