

Product Datasheet

Human IL-12/IL-23 p40 ELISA Kit (Colorimetric) NBP1-82421

Unit Size: 96 Tests

Storage of components varies. See protocol for specific instructions.

www.novusbio.com



technical@novusbio.com

Protocols, Publications, Related Products, Reviews, Research Tools and Images at:
www.novusbio.com/NBP1-82421

Updated 10/23/2024 v.20.1

Earn rewards for product
reviews and publications.

Submit a publication at www.novusbio.com/publications

Submit a review at www.novusbio.com/reviews/destination/NBP1-82421



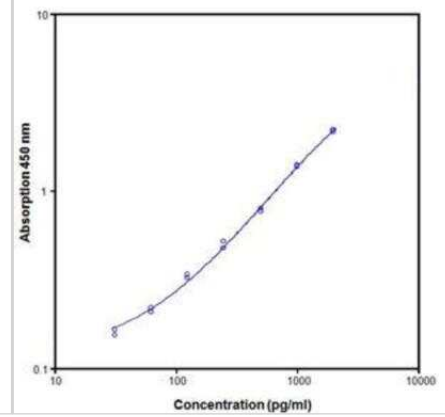
NBP1-82421**Human IL-12/IL-23 p40 ELISA Kit (Colorimetric)**

Product Information	
Unit Size	96 Tests
Concentration	Concentration is not relevant for this product. Please see the protocols for proper use of this product.
Storage	Storage of components varies. See protocol for specific instructions.
Product Description	
Gene ID	3593
Gene Symbol	IL12B
Species	Human
Specificity/Sensitivity	The assay detects both natural and recombinant human IL12B. The interference of circulating factors of the immune system was evaluated by spiking these proteins at physiologically relevant concentrations. There was no crossreactivity observed with IL-1 beta, IL- 2, IL-4, IL-5, IL-6, IL-8, IL-10, IFN gamma, TNF alpha and TNF beta. BMS2013 also detects IL/23and IL12p70.
Kit Components	Aluminium pouch(es) with a Microwell Plate coated with polyclonal antibody to human IL-12/IL-23 p40, Biotin-Conjugate anti-human IL-12/IL-23 p40 monoclonal antibody Streptavidin-HRP, Human IL-12/IL-23 p40 Standard lyophilized, 4ng/mL upon reconstitution, Sample Diluent, Assay Buffer Concentrate 20x (PBS with 1% Tween 20 and 10% BSA), Wash Buffer Concentrate 20x (PBS with 1% Tween 20), Substrate Solution (tetramethyl-benzidine), Stop Solution (1M Phosphoric acid), Blue-Dye, Green-Dye, Red-Dye, Adhesive Films
Standard Curve Range	31.3 - 2000 pg/mL
Sensitivity	< 10 pg/mL
Inter Assay	CV% < 6.4%
Intra Assay	CV% < 4.7%
Assay Type	Sandwich ELISA
Spiking Recovery	The recovery ranged from 65% to 75% with an overall mean recovery of 71%.
Suitable Sample Type	Cell culture supernatant, serum, plasma (citrate, heparin), buffered solution
Sample Volume	50 uL
Product Application Details	
Applications	ELISA
Recommended Dilutions	ELISA



Images

ELISA: Human IL12B ELISA Kit (Colorimetric) [NBP1-82421] -
Representative standard curve for human IL12B ELISA





Novus Biologicals USA

10730 E. Briarwood Avenue
Centennial, CO 80112
USA
Phone: 303.730.1950
Toll Free: 1.888.506.6887
Fax: 303.730.1966
nb-customerservice@bio-techne.com

Bio-Techne Canada

21 Canmotor Ave
Toronto, ON M8Z 4E6
Canada
Phone: 905.827.6400
Toll Free: 855.668.8722
Fax: 905.827.6402
canada.inquires@bio-techne.com

Bio-Techne Ltd

19 Barton Lane
Abingdon Science Park
Abingdon, OX14 3NB, United Kingdom
Phone: (44) (0) 1235 529449
Free Phone: 0800 37 34 15
Fax: (44) (0) 1235 533420
info.EMEA@bio-techne.com

General Contact Information

www.novusbio.com
Technical Support: nb-technical@bio-
techne.com
Orders: nb-customerservice@bio-techne.com
General: novus@novusbio.com

Products Related to NBP1-82421

210-TA-005	TNF-alpha [Unconjugated]
DY499-05	IL-12/IL-23 p40 [Biotin]
M6000B-1	IL-6 [HRP]
6507-IL-010/CF	IL-4 [Unconjugated]

Limitations

This product is for research use only and is not approved for use in humans or in clinical diagnosis. ELISA Kits are guaranteed for 6 months from date of receipt.

For more information on our 100% guarantee, please visit www.novusbio.com/guarantee

Earn gift cards/discounts by submitting a review: www.novusbio.com/reviews/submit/NBP1-82421

Earn gift cards/discounts by submitting a publication using this product:
www.novusbio.com/publications

