

Product Datasheet

SCEL Antibody - BSA Free NBP1-82138

Unit Size: 0.1 ml

Store at 4C short term. Aliquot and store at -20C long term. Avoid freeze-thaw cycles.

www.novusbio.com



technical@novusbio.com

Protocols, Publications, Related Products, Reviews, Research Tools and Images at:
www.novusbio.com/NBP1-82138

Updated 9/9/2025 v.20.1

Earn rewards for product
reviews and publications.

Submit a publication at www.novusbio.com/publications

Submit a review at www.novusbio.com/reviews/destination/NBP1-82138



NBP1-82138

SCEL Antibody - BSA Free

Product Information

Unit Size	0.1 ml
Concentration	Concentrations vary lot to lot. See vial label for concentration. If unlisted please contact technical services.
Storage	Store at 4C short term. Aliquot and store at -20C long term. Avoid freeze-thaw cycles.
Clonality	Polyclonal
Preservative	0.02% Sodium Azide
Isotype	IgG
Purity	Immunogen affinity purified
Buffer	PBS (pH 7.2) and 40% Glycerol

Product Description

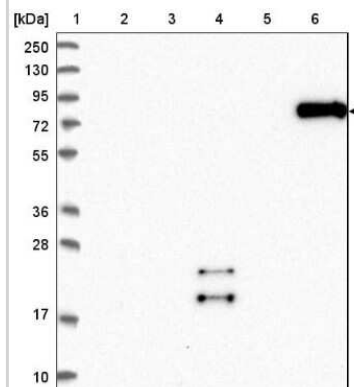
Description	Novus Biologicals Rabbit SCEL Antibody - BSA Free (NBP1-82138) is a polyclonal antibody validated for use in IHC and WB. All Novus Biologicals antibodies are covered by our 100% guarantee.
Host	Rabbit
Gene ID	8796
Gene Symbol	SCEL
Species	Human
Immunogen	This antibody was developed against Recombinant Protein corresponding to amino acids: KMSPTGNEMKSTTQGTTTRKQQDFHEVNKRRTFLQDNSWIKKRPEEEKDENYG RVVLNRHNSHDALDRKVNERDVPKATISRYS

Product Application Details

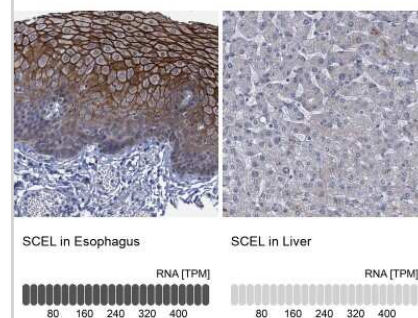
Applications	Western Blot, Immunohistochemistry-Paraffin, Immunohistochemistry
Recommended Dilutions	Western Blot 0.04-0.4 ug/ml, Immunohistochemistry 1:50 - 1:200, Immunohistochemistry-Paraffin 1:50 - 1:200
Application Notes	For IHC-Paraffin, HIER pH 6 retrieval is recommended.

Images

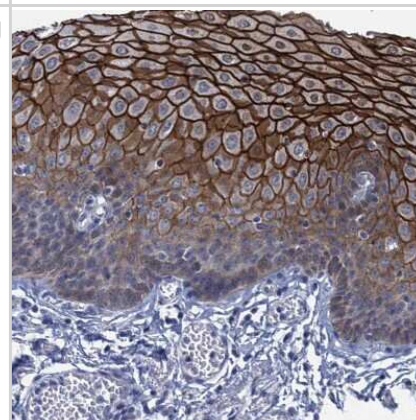
Western Blot: SCEL Antibody [NBP1-82138] - Lane 1: Marker [kDa] 250, 130, 95, 72, 55, 36, 28, 17, 10. Lane 2: Human cell line RT-4. Lane 3: Human cell line U-251MG sp. Lane 4: Human plasma (IgG/HSA depleted). Lane 5: Human liver tissue. Lane 6: Human tonsil tissue



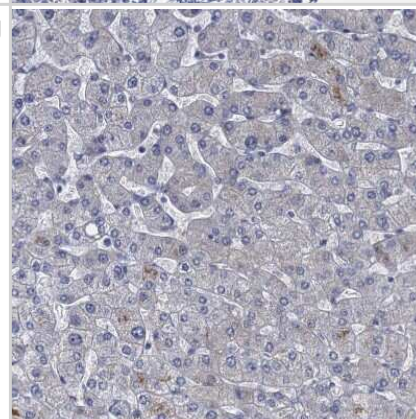
Immunohistochemistry-Paraffin: SCEL Antibody [NBP1-82138] - Analysis in human esophagus and liver tissues using NBP1-82138 antibody. Corresponding SCEL RNA-seq data are presented for the same tissues.



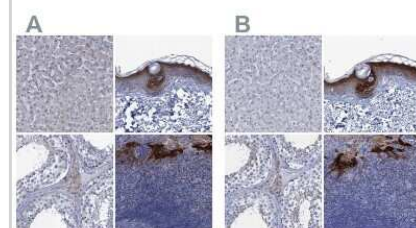
Immunohistochemistry-Paraffin: SCEL Antibody [NBP1-82138] - Staining of human esophagus shows strong membranous positivity in squamous epithelial cells.



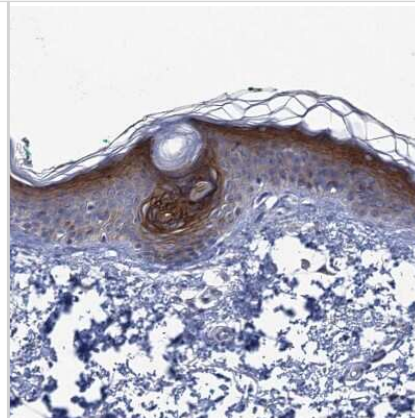
Immunohistochemistry-Paraffin: SCEL Antibody [NBP1-82138] - Staining of human liver shows no positivity in hepatocytes as expected.



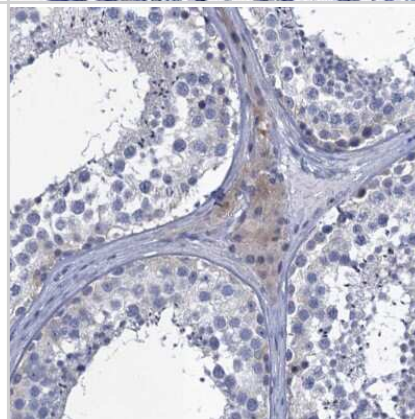
Immunohistochemistry-Paraffin: SCEL Antibody [NBP1-82138] - Staining of human liver, skin, testis and tonsil using Anti-SCEL antibody NBP1-82138 (A) shows similar protein distribution across tissues to independent antibody NBP1-82137 (B).



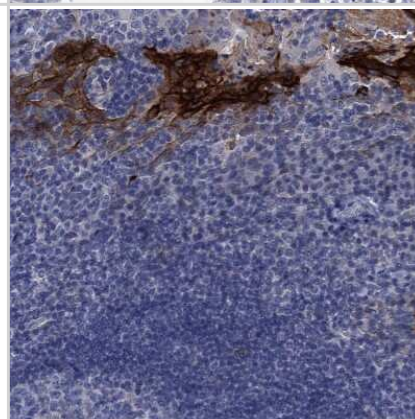
Immunohistochemistry-Paraffin: SCEL Antibody [NBP1-82138] - Staining of human skin shows moderate to strong cytoplasmic and membranous positivity in squamous epithelial cells.



Immunohistochemistry-Paraffin: SCEL Antibody [NBP1-82138] - Staining of human testis shows weak cytoplasmic positivity in Leydig cells.



Immunohistochemistry-Paraffin: SCEL Antibody [NBP1-82138] - Staining of human tonsil shows strong cytoplasmic and membranous positivity in squamous epithelial cells.





Novus Biologicals USA

10730 E. Briarwood Avenue
Centennial, CO 80112
USA
Phone: 303.730.1950
Toll Free: 1.888.506.6887
Fax: 303.730.1966
nb-customerservice@bio-techne.com

Bio-Techne Canada

21 Canmotor Ave
Toronto, ON M8Z 4E6
Canada
Phone: 905.827.6400
Toll Free: 855.668.8722
Fax: 905.827.6402
canada.inquires@bio-techne.com

Bio-Techne Ltd

19 Barton Lane
Abingdon Science Park
Abingdon, OX14 3NB, United Kingdom
Phone: (44) (0) 1235 529449
Free Phone: 0800 37 34 15
Fax: (44) (0) 1235 533420
info.EMEA@bio-techne.com

General Contact Information

www.novusbio.com
Technical Support: nb-technical@bio-techne.com
Orders: nb-customerservice@bio-techne.com
General: novus@novusbio.com

Products Related to NBP1-82138

NBP1-82138PEP	SCEL Recombinant Protein Antigen
HAF008	Goat anti-Rabbit IgG Secondary Antibody [HRP]
NB7160	Goat anti-Rabbit IgG (H+L) Secondary Antibody [HRP]
NBP2-24891	Rabbit IgG Isotype Control

Limitations

This product is for research use only and is not approved for use in humans or in clinical diagnosis. Primary Antibodies are guaranteed for 1 year from date of receipt.

For more information on our 100% guarantee, please visit www.novusbio.com/guarantee

Earn gift cards/discounts by submitting a review: www.novusbio.com/reviews/submit/NBP1-82138

Earn gift cards/discounts by submitting a publication using this product:
www.novusbio.com/publications

