

Product Datasheet

KDM6A Antibody - BSA Free

NBP1-80628

Unit Size: 0.1 ml

Store at 4C short term. Aliquot and store at -20C long term. Avoid freeze-thaw cycles.

www.novusbio.com



technical@novusbio.com

Reviews: 2 Publications: 10

Protocols, Publications, Related Products, Reviews, Research Tools and Images at:
www.novusbio.com/NBP1-80628

Updated 12/2/2025 v.20.1

Earn rewards for product reviews and publications.

Submit a publication at www.novusbio.com/publications

Submit a review at www.novusbio.com/reviews/destination/NBP1-80628



NBP1-80628

KDM6A Antibody - BSA Free

Product Information	
Unit Size	0.1 ml
Concentration	Concentrations vary lot to lot. See vial label for concentration. If unlisted please contact technical services.
Storage	Store at 4C short term. Aliquot and store at -20C long term. Avoid freeze-thaw cycles.
Clonality	Polyclonal
Preservative	0.02% Sodium Azide
Isotype	IgG
Purity	Affinity purified
Buffer	PBS (pH 7.2) and 40% Glycerol

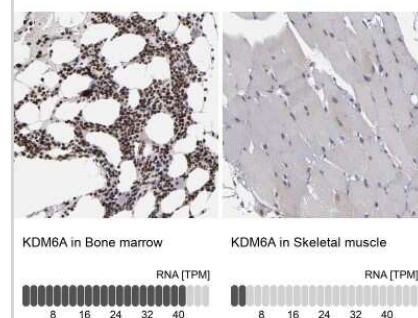
Product Description	
Description	Novus Biologicals Rabbit KDM6A Antibody - BSA Free (NBP1-80628) is a polyclonal antibody validated for use in IHC, WB, ICC/IF and IP. Anti-KDM6A Antibody: Cited in 8 publications. All Novus Biologicals antibodies are covered by our 100% guarantee.
Host	Rabbit
Gene ID	7403
Gene Symbol	KDM6A
Species	Human, Mouse
Reactivity Notes	Mouse reactivity reported from a verified customer review.
Immunogen	This antibody was developed against Recombinant Protein corresponding to amino acids: IGNNHITGSGSNGNVPYLQRNALTLPNRTNLTSSAEEPWKNQLSNSTQGLHK GQSSHSAGPNGERPLSSTGPSQHLQAAGSGIQNQNGHPTLPSNSVTQGAALN HLSSHTATSGGQQGITLTKEKPSGNILTVPETS RHT

Product Application Details	
Applications	Western Blot, Immunohistochemistry-Paraffin, Immunocytochemistry/ Immunofluorescence, Immunohistochemistry
Recommended Dilutions	Western Blot 0.04 - 0.4 ug/mL, Immunohistochemistry 1:200 - 1:500, Immunocytochemistry/ Immunofluorescence Reported in scientific literature (PMID: 32071397)., Immunohistochemistry-Paraffin 1:200 - 1:500
Application Notes	For IHC-Paraffin, HIER pH 6 retrieval is recommended.

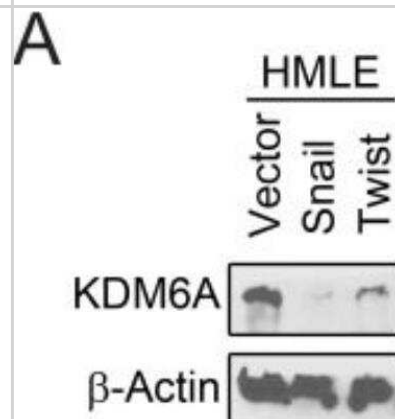


Images

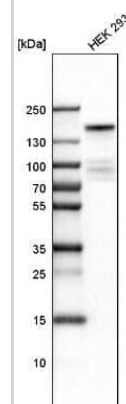
Immunohistochemistry-Paraffin: KDM6A Antibody [NBP1-80628] - Staining in human bone marrow and skeletal muscle tissues using NBP1-80628 antibody. Corresponding KDM6A RNA-seq data are presented for the same tissues.



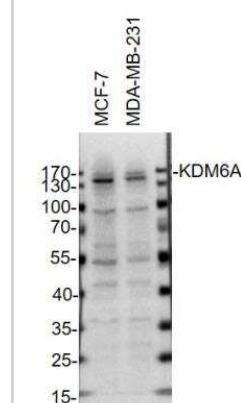
Western Blot: KDM6A Antibody [NBP1-80628] - HMLE cells were transduced with either an empty vector (HMLE-Vector), or genes encoding the EMT-inducing transcription factors Snail (HMLE-Snail) or Twist (HMLE-Twist) [4]. Whole-cell lysates were analyzed by immunoblotting for KDM6A. beta-actin was used as a loading control. Image collected and cropped by CiteAb from the following publication (<https://pubmed.ncbi.nlm.nih.gov/29029452/>) licensed under a CC-BY license.



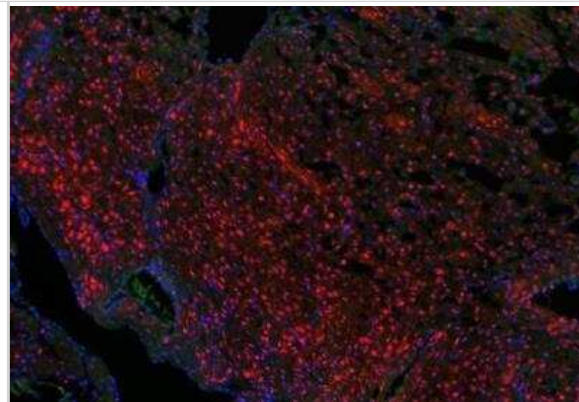
Western Blot: KDM6A Antibody [NBP1-80628] - Analysis in human cell line HEK 293.



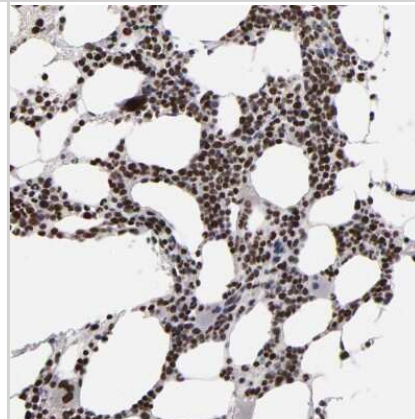
Western Blot: KDM6A Antibody [NBP1-80628] - MCF-7 and MDA-MB-231 whole cell lysates (40 ug/lane). 10% SDS-PAGE. KDM6A Antibody (NBP1-80628) primary antibody at 1:1000, 4C, overnight. Western blot image submitted by a verified customer review.



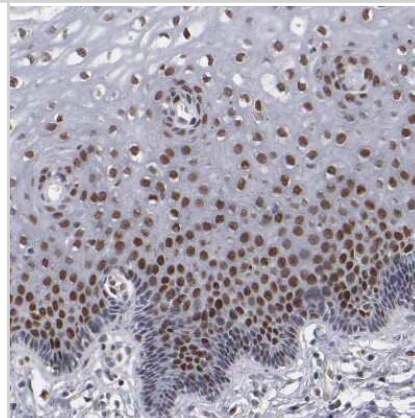
Immunohistochemistry-Paraffin: KDM6A Antibody [NBP1-80628] - Red: UTX nuclear colocalization with DAPI (in blue). Image submitted by a verified customer review.



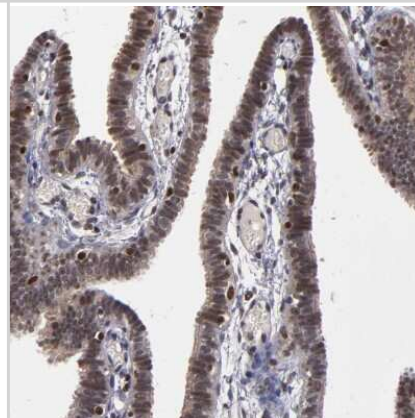
Immunohistochemistry-Paraffin: KDM6A Antibody [NBP1-80628] - Staining of human bone marrow shows high expression.



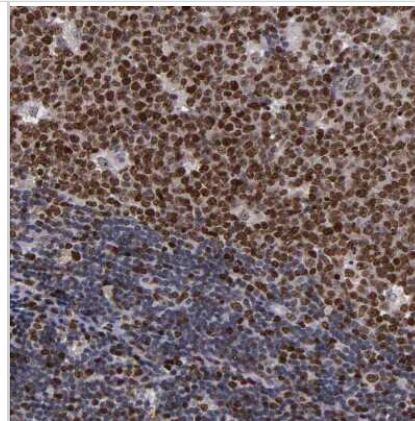
Immunohistochemistry-Paraffin: KDM6A Antibody [NBP1-80628] - Staining of human cervix shows moderate to strong nuclear positivity in squamous epithelial cells.



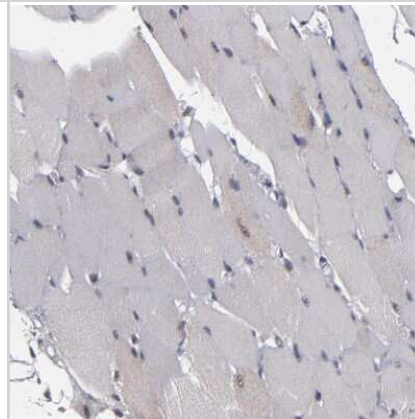
Immunohistochemistry-Paraffin: KDM6A Antibody [NBP1-80628] - Staining of human Fallopian tube shows moderate nuclear positivity in glandular cells.



Immunohistochemistry-Paraffin: KDM6A Antibody [NBP1-80628] - Staining of human lymph node shows moderate to strong nuclear positivity in germinal center cells.



Immunohistochemistry-Paraffin: KDM6A Antibody [NBP1-80628] - Staining of human skeletal muscle shows no positivity in myocytes as expected.



Publications

Zhou J, Chai X, Zhu Y et al. A methyl-to-acetyl switch in H3K27 drives metabolic reprogramming and resistance to BRAF V600E inhibition in melanoma Neoplasia (New York, N.Y.) 2025-10-01 [PMID: 40850308]

Sohn HS, Choi JW, Jhun J Et al. Tolerogenic nanoparticles induce type II collagen-specific regulatory T cells and ameliorate osteoarthritis Sci Adv 2022-11-25 [PMID: 36427299] (IF/IHC, Mouse)

Details:

Citation using the FITC version of this antibody.

Thaler R, Khani F, Sturmlechner I et al. Vitamin C epigenetically controls osteogenesis and bone mineralization Nature communications 2022-10-06 [PMID: 36202795] (WB, Mouse)

Yang Y, Chen C, Zuo Q Et al. NARF is a hypoxia-induced coactivator for OCT4-mediated breast cancer stem cell specification Sci Adv 2022-12-09 [PMID: 36490339] (WB, Chemotaxis, Human)

Details:

Citation using the DyLight 405 version of this antibody.

de Souza AF, Bressan FF, Pieri NCG Et al. Generation of Primordial Germ Cell-like Cells from iPSCs Derived from Turner Syndrome Patients Cells 2021-11-10 [PMID: 34831322] (ICC/IF, Human)

Yassin NYS, AbouZid SF, El-Kalaawy AM Et al. Silybum marianum total extract, silymarin and silibinin abate hepatocarcinogenesis and hepatocellular carcinoma growth via modulation of the HGF/c-Met, Wnt/beta-catenin, and PI3K/Akt/mTOR signaling pathways Biomedicine & pharmacotherapy = Biomedecine & pharmacotherapie 2021-11-12 [PMID: 34781148] (ICC/IF, Human)

Kim J Investigating miR-23a/b Regulation of KDM6A Protein Expression in Epithelial-Mesenchymal Transition Using Breast Cancer Cell Models Thesis 2021-01-01

Lu H, Xie Y, Tran L et al. Chemotherapy-induced S100A10 recruits KDM6A to facilitate OCT4-mediated breast cancer stemness J Clin Invest. 2020-05-19 [PMID: 32427586] (KD, IP, WB, Human)

Kato H, Asamitsu K, Sun W et al. Cancer-derived UTX TPR mutations G137V and D336G impair interaction with MLL3/4 complexes and affect UTX subcellular localization Oncogene 2020-02-18 [PMID: 32071397] (ICC/IF, Human)

Taube JH, Sphyris N, Johnson KS et al. The H3K27me3-demethylase KDM6A is suppressed in breast cancer stem-like cells, and enables the resolution of bivalency during the mesenchymal-epithelial transition. Oncotarget. 2017-09-12 [PMID: 29029452] (WB, Human)



Novus Biologicals USA

10730 E. Briarwood Avenue
Centennial, CO 80112
USA
Phone: 303.730.1950
Toll Free: 1.888.506.6887
Fax: 303.730.1966
nb-customerservice@bio-techne.com

Bio-Techne Canada

21 Canmotor Ave
Toronto, ON M8Z 4E6
Canada
Phone: 905.827.6400
Toll Free: 855.668.8722
Fax: 905.827.6402
canada.inquires@bio-techne.com

Bio-Techne Ltd

19 Barton Lane
Abingdon Science Park
Abingdon, OX14 3NB, United Kingdom
Phone: (44) (0) 1235 529449
Free Phone: 0800 37 34 15
Fax: (44) (0) 1235 533420
info.EMEA@bio-techne.com

General Contact Information

www.novusbio.com
Technical Support: nb-technical@bio-techne.com
Orders: nb-customerservice@bio-techne.com
General: novus@novusbio.com

Products Related to NBP1-80628

NBP1-80628PEP	KDM6A Recombinant Protein Antigen
NBP2-33376H	Blue Marker Antibody (6F4-F6) [HRP]
HAF008	Goat anti-Rabbit IgG Secondary Antibody [HRP]
NB7160	Goat anti-Rabbit IgG (H+L) Secondary Antibody [HRP]
NBP2-24891	Rabbit IgG Isotype Control

Limitations

This product is for research use only and is not approved for use in humans or in clinical diagnosis. Primary Antibodies are guaranteed for 1 year from date of receipt.

For more information on our 100% guarantee, please visit www.novusbio.com/guarantee

Earn gift cards/discounts by submitting a review: www.novusbio.com/reviews/submit/NBP1-80628

Earn gift cards/discounts by submitting a publication using this product:
www.novusbio.com/publications

