

# Product Datasheet

## MTHFSD Antibody NBP1-80462

Unit Size: 100ul

Store at -20C. Avoid freeze-thaw cycles.

[www.novusbio.com](http://www.novusbio.com)



[technical@novusbio.com](mailto:technical@novusbio.com)

Protocols, Publications, Related Products, Reviews, Research Tools and Images at:  
[www.novusbio.com/NBP1-80462](http://www.novusbio.com/NBP1-80462)

Updated 5/11/2021 v.20.1

Earn rewards for product  
reviews and publications.

Submit a publication at [www.novusbio.com/publications](http://www.novusbio.com/publications)

Submit a review at [www.novusbio.com/reviews/destination/NBP1-80462](http://www.novusbio.com/reviews/destination/NBP1-80462)



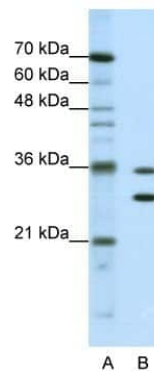
**NBP1-80462**

## MTHFSD Antibody

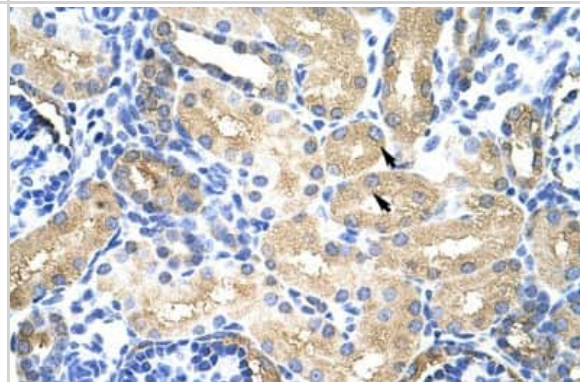
Product Information	
<b>Unit Size</b>	100ul
<b>Concentration</b>	Please see the vial label for concentration. If unlisted please contact technical services.
<b>Storage</b>	Store at -20C. Avoid freeze-thaw cycles.
<b>Clonality</b>	Polyclonal
<b>Preservative</b>	0.09% Sodium Azide
<b>Isotype</b>	IgG
<b>Purity</b>	Protein A purified
<b>Buffer</b>	PBS and 2% Sucrose
<b>Target Molecular Weight</b>	41 kDa
Product Description	
<b>Host</b>	Rabbit
<b>Gene ID</b>	64779
<b>Gene Symbol</b>	MTHFSD
<b>Species</b>	Human
<b>Immunogen</b>	Synthetic peptide directed towards the N terminal of human MTHFSD. Peptide sequence EVKVDPKPLEGVRLVLQSKKTLVPTPRLRTGLFNKITPPPGATKDIL. The peptide sequence for this immunogen was taken from within the described region.
<b>Notes</b>	The addition of 50% glycerol is optional for those storing this antibody at -20C and not aliquoting smaller units. However, please note that glycerol may interrupt some downstream antibody applications and should be added with caution.
Product Application Details	
<b>Applications</b>	Western Blot, Immunohistochemistry, Immunohistochemistry-Paraffin
<b>Recommended Dilutions</b>	Western Blot 1:1000, Immunohistochemistry 1:10-1:500, Immunohistochemistry-Paraffin 1:10-1:500
<b>Application Notes</b>	This is a rabbit polyclonal antibody against MTHFSD and was validated on Western Blot and immunohistochemistry.

## Images

Western Blot: MTHFSD Antibody [NBP1-80462] - Jurkat cell lysate,  
Antibody Titration: 0.625ug/ml



Immunohistochemistry-Paraffin: MTHFSD Antibody [NBP1-80462] -  
Human kidney Tissue, antibody concentration 4-8ug/ml. Cells with  
positive label: renal corpuscle cells (indicated with arrows) 400X  
magnification.





### **Novus Biologicals USA**

10730 E. Briarwood Avenue  
Centennial, CO 80112  
USA  
Phone: 303.730.1950  
Toll Free: 1.888.506.6887  
Fax: 303.730.1966  
nb-customerservice@bio-techne.com

### **Bio-Techne Canada**

21 Canmotor Ave  
Toronto, ON M8Z 4E6  
Canada  
Phone: 905.827.6400  
Toll Free: 855.668.8722  
Fax: 905.827.6402  
canada.inquires@bio-techne.com

### **Bio-Techne Ltd**

19 Barton Lane  
Abingdon Science Park  
Abingdon, OX14 3NB, United Kingdom  
Phone: (44) (0) 1235 529449  
Free Phone: 0800 37 34 15  
Fax: (44) (0) 1235 533420  
info.EMEA@bio-techne.com

### **General Contact Information**

www.novusbio.com  
Technical Support: nb-technical@bio-  
techne.com  
Orders: nb-customerservice@bio-techne.com  
General: novus@novusbio.com

### **Limitations**

This product is for research use only and is not approved for use in humans or in clinical diagnosis. Primary Antibodies are guaranteed for 1 year from date of receipt.

For more information on our 100% guarantee, please visit [www.novusbio.com/guarantee](http://www.novusbio.com/guarantee)

Earn gift cards/discounts by submitting a review: [www.novusbio.com/reviews/submit/NBP1-80462](http://www.novusbio.com/reviews/submit/NBP1-80462)

Earn gift cards/discounts by submitting a publication using this product:  
[www.novusbio.com/publications](http://www.novusbio.com/publications)

