

Product Datasheet

SIRT4 Antibody - BSA Free

NBP1-80002

Unit Size: 100 ul

Store at 4C short term. Aliquot and store at -20C long term. Avoid freeze-thaw cycles.

www.novusbio.com



technical@novusbio.com

Protocols, Publications, Related Products, Reviews, Research Tools and Images at:
www.novusbio.com/NBP1-80002

Updated 2/21/2025 v.20.1

Earn rewards for product
reviews and publications.

Submit a publication at www.novusbio.com/publications

Submit a review at www.novusbio.com/reviews/destination/NBP1-80002



NBP1-80002

SIRT4 Antibody - BSA Free

Product Information

Unit Size	100 ul
Concentration	0.5 mg/ml
Storage	Store at 4C short term. Aliquot and store at -20C long term. Avoid freeze-thaw cycles.
Clonality	Polyclonal
Preservative	0.09% Sodium Azide
Isotype	IgG
Purity	Affinity purified
Buffer	PBS, 2% Sucrose
Target Molecular Weight	53 kDa

Product Description

Description	The addition of 50% glycerol is optional for those storing this antibody at -20C and not aliquoting smaller units. However, please note that glycerol may interrupt some downstream antibody applications and should be added with caution.
Host	Rabbit
Gene ID	23409
Gene Symbol	SIRT4
Species	Human
Immunogen	Synthetic peptide directed towards the middle region of human SIRT4. Peptide sequence QVPTCVQC GGHLKPDV VFFGDTV NPDKVDFVHKRVKEAD SLLVVGSSLQV. The peptide sequence for this immunogen was taken from within the described region.

Product Application Details

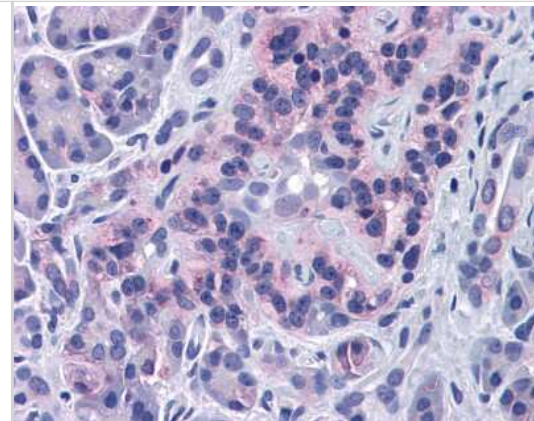
Applications	Western Blot, Immunohistochemistry, Immunohistochemistry-Paraffin
Recommended Dilutions	Western Blot 1.0 ug/ml, Immunohistochemistry 1:10-1:500, Immunohistochemistry-Paraffin 1:10-1:500

Images

Western Blot: SIRT4 Antibody [NBP1-80002] - Recommended Titration: 0.2 - 1 ug/ml ELISA Titer: 1:62500 Positive Control: MCF7 cell lysate



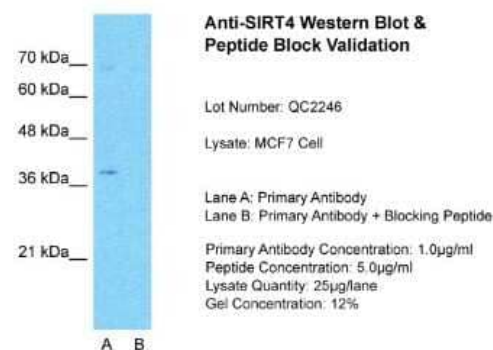
Immunohistochemistry: SIRT4 Antibody [NBP1-80002] - Staining of a pancreas crosssection.



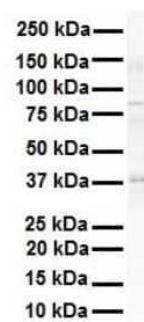
Western Blot: SIRT4 Antibody [NBP1-80002] - Antibody Titration: 1 ug/ml Human Liver.



Western Blot: SIRT4 Antibody [NBP1-80002] - MCF7 Lane A: Primary Antibody Lane B: Primary Antibody + Blocking Peptide Primary Antibody Concentration: 1 ug/ml Peptide Concentration: 5 ug/ml lysate Quantity: 25ug/ Lane/ Lane Gel Concentration: 0.12.

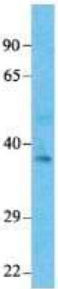


Western Blot: SIRT4 Antibody [NBP1-80002] - Antibody Titration: 1 ug/ml Human Raji.



Western Blot: SIRT4 Antibody [NBP1-80002] - Sample Tissue: Human Fetal Liver Antibody Dilution: 1.0 ug/ml

SIRT4



Host: Rabbit
Target Name: SIRT4
Sample Type: Human Liver
Antibody Dilution: 1 ug/ml





Novus Biologicals USA

10730 E. Briarwood Avenue
Centennial, CO 80112
USA
Phone: 303.730.1950
Toll Free: 1.888.506.6887
Fax: 303.730.1966
nb-customerservice@bio-techne.com

Bio-Techne Canada

21 Canmotor Ave
Toronto, ON M8Z 4E6
Canada
Phone: 905.827.6400
Toll Free: 855.668.8722
Fax: 905.827.6402
canada.inquires@bio-techne.com

Bio-Techne Ltd

19 Barton Lane
Abingdon Science Park
Abingdon, OX14 3NB, United Kingdom
Phone: (44) (0) 1235 529449
Free Phone: 0800 37 34 15
Fax: (44) (0) 1235 533420
info.EMEA@bio-techne.com

General Contact Information

www.novusbio.com
Technical Support: nb-technical@bio-
techne.com
Orders: nb-customerservice@bio-techne.com
General: novus@novusbio.com

Error: Subreport could not be shown.

Limitations

This product is for research use only and is not approved for use in humans or in clinical diagnosis. Primary Antibodies are guaranteed for 1 year from date of receipt.

For more information on our 100% guarantee, please visit www.novusbio.com/guarantee

Earn gift cards/discounts by submitting a review: www.novusbio.com/reviews/submit/NBP1-80002

Earn gift cards/discounts by submitting a publication using this product:
www.novusbio.com/publications

