

# Product Datasheet

## **TTF-1 / NKX2-1 Antibody (G21-G)** **NBP1-79056-100ul**

Unit Size: 100 ul

Store at 4C. Do not freeze.

[www.novusbio.com](http://www.novusbio.com)



[technical@novusbio.com](mailto:technical@novusbio.com)

Protocols, Publications, Related Products, Reviews, Research Tools and Images at:  
[www.novusbio.com/NBP1-79056](http://www.novusbio.com/NBP1-79056)

Updated 10/23/2024 v.20.1

Earn rewards for product  
reviews and publications.

Submit a publication at [www.novusbio.com/publications](http://www.novusbio.com/publications)

Submit a review at [www.novusbio.com/reviews/destination/NBP1-79056](http://www.novusbio.com/reviews/destination/NBP1-79056)



**NBP1-79056-100ul**

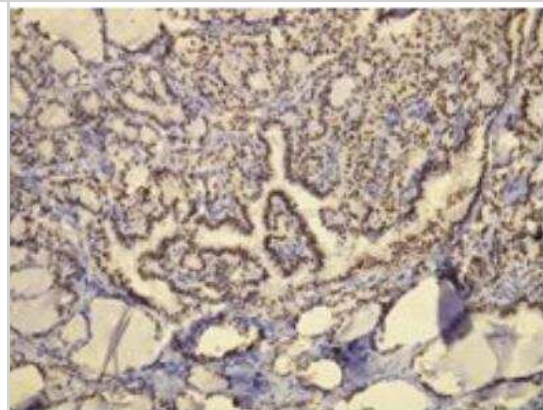
TTF-1 / NKX2-1 Antibody (G21-G)

Product Information	
Unit Size	100 ul
Concentration	Please see the vial label for concentration. If unlisted please contact technical services.
Storage	Store at 4C. Do not freeze.
Clonality	Monoclonal
Clone	G21-G
Preservative	0.05% Sodium Azide
Isotype	IgG
Purity	Immunogen affinity purified
Buffer	20mM Tris-HCl (pH 8.0) and 20mg/ml BSA
Product Description	
Description	This antibody is immunoaffinity purified with immunogenic peptide as a ligand.
Host	Rabbit
Gene ID	7080
Gene Symbol	NKX2-1
Species	Human
Immunogen	Peptide derived from N-terminal sequence of human TTF-1 / NKX2-1. Antibody recognizes the epitope between Leu97 - Gly110.
Notes	This antibody is immunoaffinity purified with immunogenic peptide as a ligand.
Product Application Details	
Applications	Immunohistochemistry, Immunohistochemistry-Paraffin
Recommended Dilutions	Immunohistochemistry 1:10-1:500, Immunohistochemistry-Paraffin 1:100-1:200

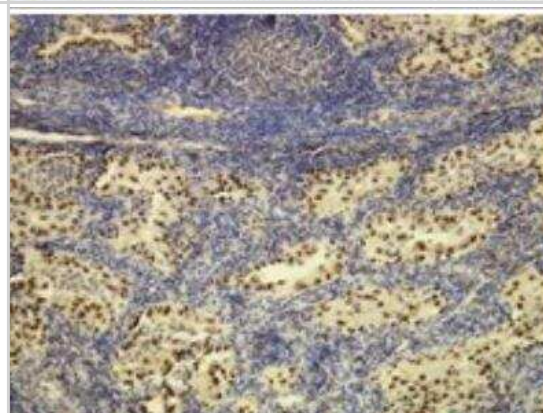


## Images

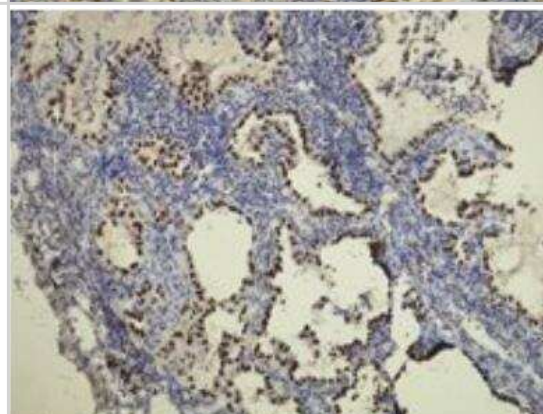
Immunohistochemistry-Paraffin: TTF1 / NKX2.1 Antibody (G21-G) [NBP1-79056] - Thyroid papillary carcinoma. Formalin fixed, paraffin embedded human tissues (4 um sections) stained with anti-TTF1monospecific antibody.



Immunohistochemistry-Paraffin: TTF1 / NKX2.1 Antibody (G21-G) [NBP1-79056] - Nuclear expression of TTF1 in lung adenocarcinoma. Formalin fixed, paraffin embedded human tissues (4 um sections) stained with anti-TTF1 monospecific antibody.



Immunohistochemistry-Paraffin: TTF1 / NKX2.1 Antibody (G21-G) [NBP1-79056] - Nuclear expression of TTF1 in lung adenocarcinoma. Formalin fixed, paraffin embedded human tissues (4 um sections) stained with anti-TTF1 monospecific antibody.





### **Novus Biologicals USA**

10730 E. Briarwood Avenue  
Centennial, CO 80112  
USA  
Phone: 303.730.1950  
Toll Free: 1.888.506.6887  
Fax: 303.730.1966  
nb-customerservice@bio-techne.com

### **Bio-Techne Canada**

21 Canmotor Ave  
Toronto, ON M8Z 4E6  
Canada  
Phone: 905.827.6400  
Toll Free: 855.668.8722  
Fax: 905.827.6402  
canada.inquires@bio-techne.com

### **Bio-Techne Ltd**

19 Barton Lane  
Abingdon Science Park  
Abingdon, OX14 3NB, United Kingdom  
Phone: (44) (0) 1235 529449  
Free Phone: 0800 37 34 15  
Fax: (44) (0) 1235 533420  
info.EMEA@bio-techne.com

### **General Contact Information**

[www.novusbio.com](http://www.novusbio.com)  
Technical Support: nb-technical@bio-techne.com  
Orders: nb-customerservice@bio-techne.com  
General: novus@novusbio.com

### **Products Related to NBP1-79056-100ul**

HAF008	Goat anti-Rabbit IgG Secondary Antibody [HRP]
NB7160	Goat anti-Rabbit IgG (H+L) Secondary Antibody [HRP]
NBP2-24891	Rabbit IgG Isotype Control
H00007080-Q01-10ug	Recombinant Human TTF-1 / NKX2-1 GST (N-Term) Protein

### **Limitations**

This product is for research use only and is not approved for use in humans or in clinical diagnosis. Primary Antibodies are guaranteed for 1 year from date of receipt.

For more information on our 100% guarantee, please visit [www.novusbio.com/guarantee](http://www.novusbio.com/guarantee)

Earn gift cards/discounts by submitting a review: [www.novusbio.com/reviews/submit/NBP1-79056](http://www.novusbio.com/reviews/submit/NBP1-79056)

Earn gift cards/discounts by submitting a publication using this product:  
[www.novusbio.com/publications](http://www.novusbio.com/publications)

