

# Product Datasheet

## Reverse Cholesterol Transport Antibody Pack NBP1-78954

Unit Size: 2 Vials

Aliquot and store at -20C or -80C. Avoid freeze-thaw cycles.

[www.novusbio.com](http://www.novusbio.com)



[technical@novusbio.com](mailto:technical@novusbio.com)

Protocols, Publications, Related Products, Reviews, Research Tools and Images at:  
[www.novusbio.com/NBP1-78954](http://www.novusbio.com/NBP1-78954)

Updated 7/4/2023 v.20.1

Earn rewards for product  
reviews and publications.

Submit a publication at [www.novusbio.com/publications](http://www.novusbio.com/publications)

Submit a review at [www.novusbio.com/reviews/destination/NBP1-78954](http://www.novusbio.com/reviews/destination/NBP1-78954)



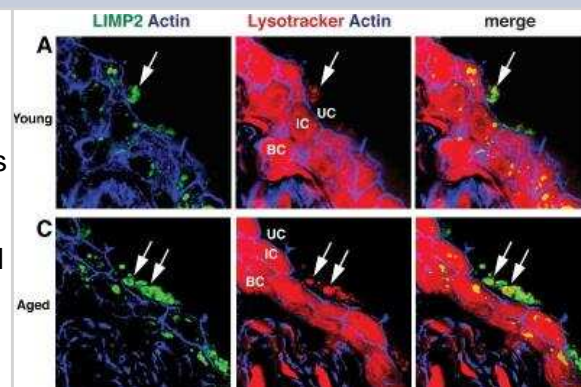
**NBP1-78954****Reverse Cholesterol Transport Antibody Pack**

<b>Product Information</b>	
<b>Unit Size</b>	2 Vials
<b>Concentration</b>	Concentration of individual antibodies may be found on the vial label. If unlisted please contact technical services.
<b>Storage</b>	Aliquot and store at -20C or -80C. Avoid freeze-thaw cycles.
<b>Buffer</b>	See individual datasheets.
<b>Product Description</b>	
<b>Description</b>	This pack contains 1 vial each of: NB110-59724 (25 uL), NB400-129 (25 uL).
<b>Species</b>	Human, Rat
<b>Reactivity Notes</b>	Human and rat, however additional species may be possible for individual products.
<b>Specificity/Sensitivity</b>	This Reverse Cholesterol Transport Antibodies Sample Pack includes antibodies to LIMPII and CD36.
<b>Immunogen</b>	See individual datasheets.
<b>Kit Components</b>	NB110-59724: CD36 Antibody (D-2712) - BSA Free, NB400-129: LIMPII/SR-B2 Antibody
<b>Product Application Details</b>	
<b>Applications</b>	Western Blot, Immunocytochemistry/Immunofluorescence, Immunohistochemistry
<b>Recommended Dilutions</b>	Western Blot, Immunohistochemistry, Immunocytochemistry/Immunofluorescence
<b>Application Notes</b>	Mainly Western blot and immunocytochemistry, however additional applications may be possible for individual products. See individual datasheets for validated applications.

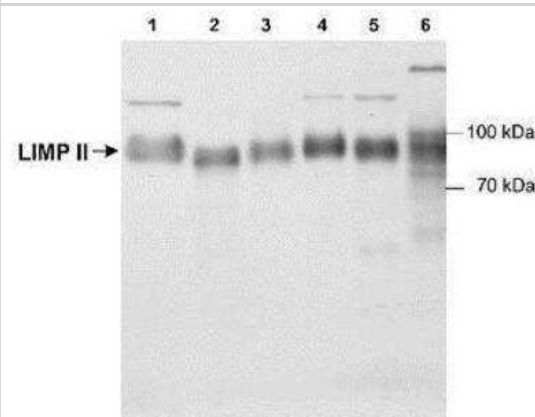


## Images

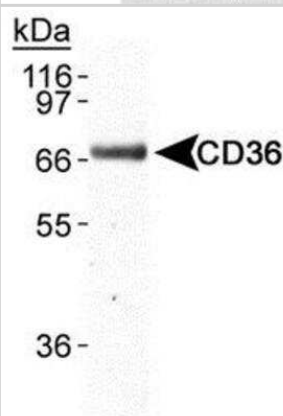
**Immunohistochemistry: Reverse Cholesterol Transport Antibody Pack [NBP1-78954]** - Lysotracker Red accumulates in endolysosomes. Immunofluorescence of young (A) and aged (C) urothelium incubated with Lysotracker Red (red) and co-stained with antibodies to LIMP2 (green structures) and phalloidin (blue), which labels the cortical actin cytoskeleton. Large, Lysotracker Red-positive endolysosomes are marked with white arrows. Underlying intermediate (IC) and basal cells (BC) show non-specific cytoplasmic Lysotracker Red staining that did not appear in umbrella cells (UC). Image collected and cropped by CiteAb from the following publication (<https://dx.plos.org/10.1371/journal.pone.0198817>), licensed under a CC-BY license. LIMP2/SR-B2 Antibody [NB400-129]



**Western Blot: Reverse Cholesterol Transport Antibody Pack 3vials [NBP1-78954]** - Detection of LIMP II (~85 kDa) using NB400-129, in Lane 1: Rat cardiac fibroblasts (RCF), 3T3 mouse fibroblasts (2), canine lung lysate (3), RCF treated with angiotensin II (4), and H2O2 (5), HEPG2 human liver lysate (6).



**Western Blot: Reverse Cholesterol Transport Antibody Pack 3vials [NBP1-78954]** - Detection of CD36 in mouse adipose lysate using NB110-59724.





### **Novus Biologicals USA**

10730 E. Briarwood Avenue  
Centennial, CO 80112  
USA  
Phone: 303.730.1950  
Toll Free: 1.888.506.6887  
Fax: 303.730.1966  
nb-customerservice@bio-techne.com

### **Bio-Techne Canada**

21 Canmotor Ave  
Toronto, ON M8Z 4E6  
Canada  
Phone: 905.827.6400  
Toll Free: 855.668.8722  
Fax: 905.827.6402  
canada.inquires@bio-techne.com

### **Bio-Techne Ltd**

19 Barton Lane  
Abingdon Science Park  
Abingdon, OX14 3NB, United Kingdom  
Phone: (44) (0) 1235 529449  
Free Phone: 0800 37 34 15  
Fax: (44) (0) 1235 533420  
info.EMEA@bio-techne.com

### **General Contact Information**

[www.novusbio.com](http://www.novusbio.com)  
Technical Support: nb-technical@bio-techne.com  
Orders: nb-customerservice@bio-techne.com  
General: novus@novusbio.com

### **Limitations**

This product is for research use only and is not approved for use in humans or in clinical diagnosis. Antibody Packs are guaranteed for 1 year from date of receipt.

For more information on our 100% guarantee, please visit [www.novusbio.com/guarantee](http://www.novusbio.com/guarantee)

Earn gift cards/discounts by submitting a review: [www.novusbio.com/reviews/submit/NBP1-78954](http://www.novusbio.com/reviews/submit/NBP1-78954)

Earn gift cards/discounts by submitting a publication using this product:  
[www.novusbio.com/publications](http://www.novusbio.com/publications)

