

# Product Datasheet

## Lung Cancer Metastasis Antibody Pack NBP1-78949

Unit Size: 2 Vials

Aliquot and store at -20C or -80C. Avoid freeze-thaw cycles.

[www.novusbio.com](http://www.novusbio.com)



[technical@novusbio.com](mailto:technical@novusbio.com)

Protocols, Publications, Related Products, Reviews, Research Tools and Images at:  
[www.novusbio.com/NBP1-78949](http://www.novusbio.com/NBP1-78949)

Updated 7/4/2023 v.20.1

Earn rewards for product  
reviews and publications.

Submit a publication at [www.novusbio.com/publications](http://www.novusbio.com/publications)

Submit a review at [www.novusbio.com/reviews/destination/NBP1-78949](http://www.novusbio.com/reviews/destination/NBP1-78949)



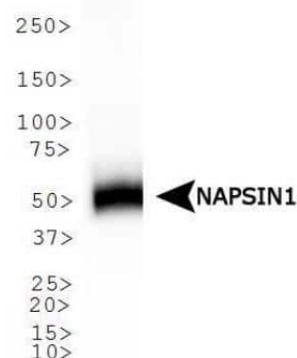
**NBP1-78949****Lung Cancer Metastasis Antibody Pack**

<b>Product Information</b>	
<b>Unit Size</b>	2 Vials
<b>Concentration</b>	Concentration of individual antibodies may be found on the vial label. If unlisted please contact technical services.
<b>Storage</b>	Aliquot and store at -20C or -80C. Avoid freeze-thaw cycles.
<b>Buffer</b>	See individual datasheets.
<b>Product Description</b>	
<b>Description</b>	This pack contains 1 vial each of: NB100-2756 (25 uL), NB110-68133 (25 uL).
<b>Species</b>	Human
<b>Reactivity Notes</b>	Human, however additional species may be possible for individual products.
<b>Specificity/Sensitivity</b>	This Lung Cancer Metastasis Antibodies Sample Pack includes antibodies to NAPSIN1 and Cytokeratin 1.
<b>Immunogen</b>	See individual datasheets.
<b>Kit Components</b>	NB110-68133: Napsin A Antibody (TMU-Ad02), NB100-2756: Cytokeratin 1 Antibody (LHK1) - BSA Free
<b>Product Application Details</b>	
<b>Applications</b>	Western Blot, Immunohistochemistry, Immunohistochemistry-Paraffin
<b>Recommended Dilutions</b>	Western Blot, Immunohistochemistry, Immunohistochemistry-Paraffin
<b>Application Notes</b>	Mainly Western blot and immunohistochemistry, however additional applications may be possible for individual products. See individual datasheets for validated applications.

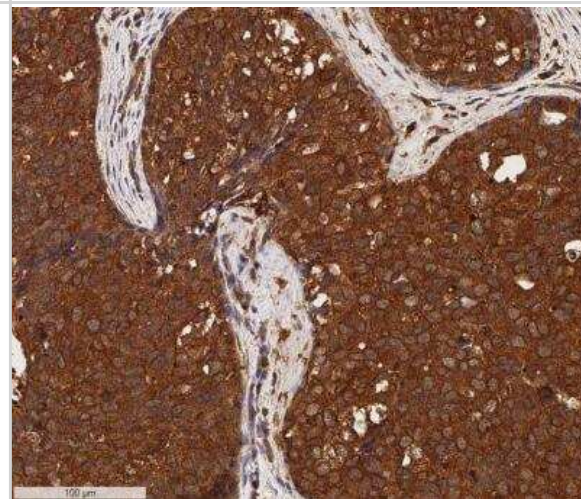


## Images

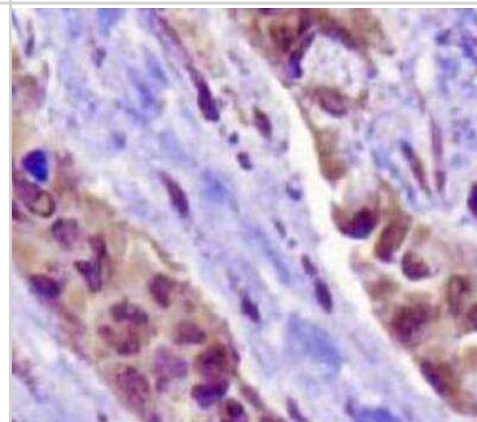
Western Blot: Lung Cancer Metastasis Antibody Pack [NBP1-78949] - Analysis of NAPSA expression in human lung using NB110-68133.



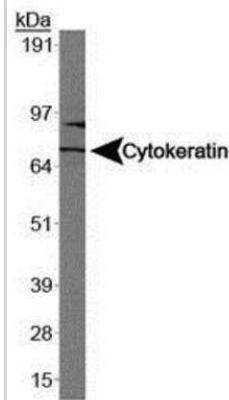
Immunohistochemistry-Paraffin: Lung Cancer Metastasis Antibody Pack [NBP1-78949] - IHC analysis of a formalin fixed paraffin-embedded (FFPE) human breast cancer using 5ug/ml conc. of Cytokeratin 1 antibody (NB100-2756, clone LHK1) on a Bond Rx autostainer (Leica Biosystems). The assay involved 20 minutes of heat induced antigen retrieval (HIER) using 10mM sodium citrate buffer (pH 6.0) and endogenous peroxidase quenching with peroxide block. The sections were incubated with primary antibody for 30 minutes and Bond Polymer Refine Detection (Leica Biosystems) with DAB was used for signal development followed by counterstaining with hematoxylin. Whole slide scanning and capturing of representative images (20X) was performed using Aperio AT2 (Leica Biosystems). A membrane-cytoplasmic staining of Cytokeratin 1 was observed in the cancer cells with signal localized more to the cell membranes. Tumor stroma was mostly negative for Cytokeratin 1. Staining was performed by Histowiz.



Immunohistochemistry: Lung Cancer Metastasis Antibody Pack [NBP1-78949] - 2vials [NBP1-78949] - Immunohistochemical analysis of Napsin1 on human lung adenocarcinoma using NB110-68133.



Western Blot: Lung Cancer Metastasis Antibody Pack 2vials [NBP1-78949] - Western blot analysis of Cytokeratin 1 in Caco-2 using NB100-2756.





### **Novus Biologicals USA**

10730 E. Briarwood Avenue  
Centennial, CO 80112  
USA  
Phone: 303.730.1950  
Toll Free: 1.888.506.6887  
Fax: 303.730.1966  
nb-customerservice@bio-techne.com

### **Bio-Techne Canada**

21 Canmotor Ave  
Toronto, ON M8Z 4E6  
Canada  
Phone: 905.827.6400  
Toll Free: 855.668.8722  
Fax: 905.827.6402  
canada.inquires@bio-techne.com

### **Bio-Techne Ltd**

19 Barton Lane  
Abingdon Science Park  
Abingdon, OX14 3NB, United Kingdom  
Phone: (44) (0) 1235 529449  
Free Phone: 0800 37 34 15  
Fax: (44) (0) 1235 533420  
info.EMEA@bio-techne.com

### **General Contact Information**

[www.novusbio.com](http://www.novusbio.com)  
Technical Support: nb-technical@bio-techne.com  
Orders: nb-customerservice@bio-techne.com  
General: novus@novusbio.com

### **Limitations**

This product is for research use only and is not approved for use in humans or in clinical diagnosis. Antibody Packs are guaranteed for 1 year from date of receipt.

For more information on our 100% guarantee, please visit [www.novusbio.com/guarantee](http://www.novusbio.com/guarantee)

Earn gift cards/discounts by submitting a review: [www.novusbio.com/reviews/submit/NBP1-78949](http://www.novusbio.com/reviews/submit/NBP1-78949)

Earn gift cards/discounts by submitting a publication using this product:  
[www.novusbio.com/publications](http://www.novusbio.com/publications)

