

# Product Datasheet

## Cell Cycle and DNA Repair Antibody Pack NBP1-78941

Unit Size: 3 Vials

Aliquot and store at -20C or -80C. Avoid freeze-thaw cycles.

[www.novusbio.com](http://www.novusbio.com)



[technical@novusbio.com](mailto:technical@novusbio.com)

Protocols, Publications, Related Products, Reviews, Research Tools and Images at:  
[www.novusbio.com/NBP1-78941](http://www.novusbio.com/NBP1-78941)

Updated 7/4/2023 v.20.1

Earn rewards for product  
reviews and publications.

Submit a publication at [www.novusbio.com/publications](http://www.novusbio.com/publications)

Submit a review at [www.novusbio.com/reviews/destination/NBP1-78941](http://www.novusbio.com/reviews/destination/NBP1-78941)



**NBP1-78941****Cell Cycle and DNA Repair Antibody Pack**

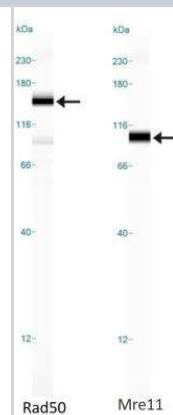
<b>Product Information</b>	
<b>Unit Size</b>	3 Vials
<b>Concentration</b>	Concentration of individual antibodies may be found on the vial label. If unlisted please contact technical services.
<b>Storage</b>	Aliquot and store at -20C or -80C. Avoid freeze-thaw cycles.
<b>Buffer</b>	See individual datasheets.

<b>Product Description</b>	
<b>Description</b>	This pack contains 1 vial each of: NB100-142 (25 uL), NB100-143 (25 uL) and NB100-1487 (25 uL).
<b>Species</b>	Human, Mouse
<b>Reactivity Notes</b>	Human and mouse, however additional species may be possible for individual products.
<b>Specificity/Sensitivity</b>	This Cell Cycle and DNA Repair Antibodies Sample Pack includes antibodies to Mre11, NBS1 and RAD50.
<b>Immunogen</b>	See individual datasheets.
<b>Kit Components</b>	NB100-1487: Rad50 Antibody, NB100-142: Mre11 Antibody, NB100-143: Nbs1 Antibody

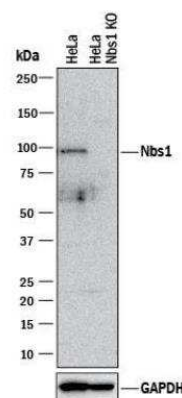
<b>Product Application Details</b>	
<b>Applications</b>	Western Blot, Simple Western, Immunocytochemistry/Immunofluorescence, Immunoprecipitation, Knockout Validated
<b>Recommended Dilutions</b>	Western Blot, Simple Western, Immunocytochemistry/Immunofluorescence, Immunoprecipitation, Knockout Validated
<b>Application Notes</b>	Mainly Immunoprecipitation and Western blot, however additional applications may be possible for individual products. See individual datasheets for validated applications.

**Images**

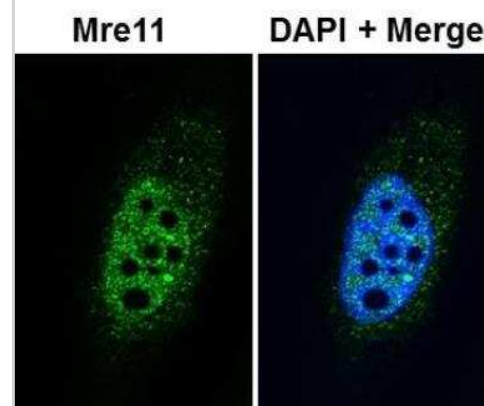
Simple Western: Cell Cycle and DNA Repair Antibody Pack [NBP1-78941] - Simple Western lane view shows a specific band for Rad50 in 0.5 mg/ml of HeLa lysate and a specific band for Mre11 in 0.5 mg/mL of HeLa lysate. These experiments were performed under reducing conditions using the 12-230 kDa separation system.



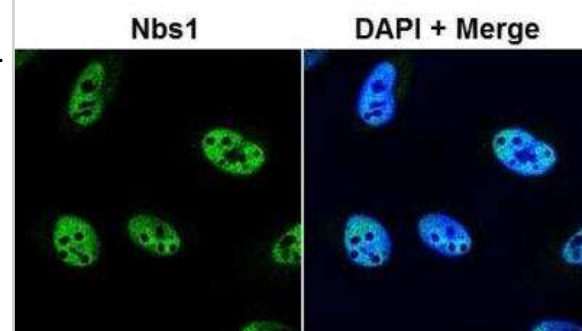
**Knockout Validated: Cell Cycle and DNA Repair Antibody Pack [NBP1-78941]** - Lysates of HeLa human cervical epithelial carcinoma parental cell line and Nbs1 knockout (KO) HeLa cell line. PVDF membrane was probed with 1:1000 of Rabbit Anti-Human Nbs1 Polyclonal Antibody (NB100-143) followed by HRP-conjugated Anti-Rabbit IgG Secondary Antibody (HAF008). Specific band was detected for Nbs1 at approximately 95 kDa (as indicated) in the parental HeLa cell line, but is not detectable in the knockout HeLa cell line. This experiment was conducted under reducing conditions.



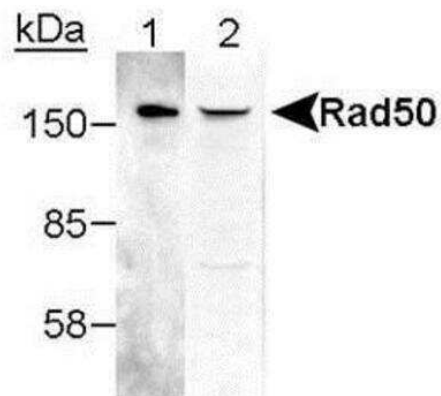
**Immunocytochemistry/Immunofluorescence: Cell Cycle and DNA Repair Antibody Pack [NBP1-78941]** - IF using NB100-142 on HeLa cells. Image from verified customer review.



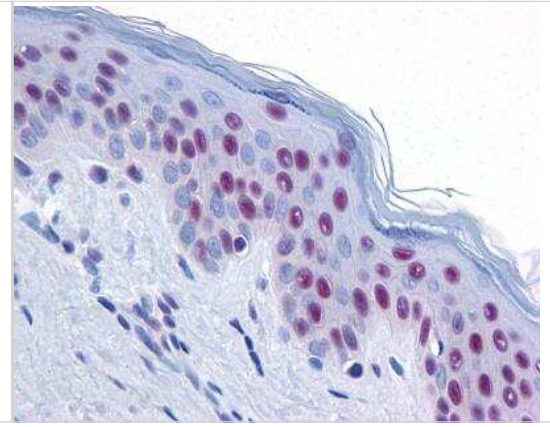
**Immunocytochemistry/Immunofluorescence: Cell Cycle and DNA Repair Antibody Pack [NBP1-78941]** - Nbs1 staining (NB100-143) in HeLa cells. Image from verified customer review.



**Western Blot: Cell Cycle and DNA Repair Antibody Pack 3vials [NBP1-78941]** - Detection of Rad50 using NB100-1487. Lane 1: 25 ng purified hMre11-hRad50 complex Lane 2: 25 ug crude HeLa extract



Immunohistochemistry: Cell Cycle and DNA Repair Antibody Pack [NBP1-78941] - MRE11 staining in the human epidermis detected with NB100-142.





### **Novus Biologicals USA**

10730 E. Briarwood Avenue  
Centennial, CO 80112  
USA  
Phone: 303.730.1950  
Toll Free: 1.888.506.6887  
Fax: 303.730.1966  
nb-customerservice@bio-techne.com

### **Bio-Techne Canada**

21 Canmotor Ave  
Toronto, ON M8Z 4E6  
Canada  
Phone: 905.827.6400  
Toll Free: 855.668.8722  
Fax: 905.827.6402  
canada.inquires@bio-techne.com

### **Bio-Techne Ltd**

19 Barton Lane  
Abingdon Science Park  
Abingdon, OX14 3NB, United Kingdom  
Phone: (44) (0) 1235 529449  
Free Phone: 0800 37 34 15  
Fax: (44) (0) 1235 533420  
info.EMEA@bio-techne.com

### **General Contact Information**

[www.novusbio.com](http://www.novusbio.com)  
Technical Support: nb-technical@bio-techne.com  
Orders: nb-customerservice@bio-techne.com  
General: novus@novusbio.com

### **Limitations**

This product is for research use only and is not approved for use in humans or in clinical diagnosis. Antibody Packs are guaranteed for 1 year from date of receipt.

For more information on our 100% guarantee, please visit [www.novusbio.com/guarantee](http://www.novusbio.com/guarantee)

Earn gift cards/discounts by submitting a review: [www.novusbio.com/reviews/submit/NBP1-78941](http://www.novusbio.com/reviews/submit/NBP1-78941)

Earn gift cards/discounts by submitting a publication using this product:  
[www.novusbio.com/publications](http://www.novusbio.com/publications)

