

Product Datasheet

SARS-CoV 3CL Protease Antibody NBP1-78110

Unit Size: 0.5 mg

Store lyophilized antibody at 4C. Aliquot reconstituted liquid and store at -20C. Avoid freeze-thaw cycles.

www.novusbio.com



technical@novusbio.com

Protocols, Publications, Related Products, Reviews, Research Tools and Images at:
www.novusbio.com/NBP1-78110

Updated 12/30/2020 v.20.1

Earn rewards for product
reviews and publications.

Submit a publication at www.novusbio.com/publications

Submit a review at www.novusbio.com/reviews/destination/NBP1-78110



NBP1-78110**SARS-CoV 3CL Protease Antibody**

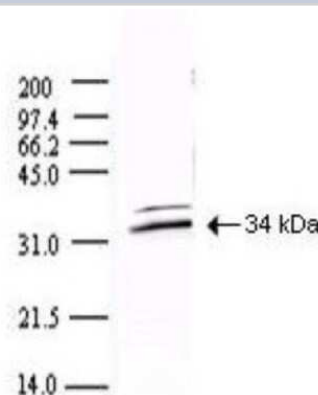
Product Information	
Unit Size	0.5 mg
Concentration	LYOPH mg/ml
Storage	Store lyophilized antibody at 4C. Aliquot reconstituted liquid and store at -20C. Avoid freeze-thaw cycles.
Clonality	Polyclonal
Preservative	0.01% Sodium Azide
Reconstitution Instructions	Reconstitute with 100 ul deionized water.
Isotype	IgG
Purity	Protein A purified
Buffer	Lyophilized from 0.02 M Potassium Phosphate, 0.15 M Sodium Chloride, pH 7.2

Product Description	
Host	Rabbit
Species	SARS-CoV
Reactivity Notes	Immunogen displays the following percentage of sequence identity for non-tested species: COVID-19 (96%)
Specificity/Sensitivity	This protein A purified antibody is directed against SARS Coronavirus 3CL Protease. A BLAST analysis was used to suggest reactivity with related Coronavirus proteins.
Immunogen	The antibody was developed by immunizing rabbits with a full length recombinant protein corresponding to 3CL Protease for the Human SARS coronavirus (Genbank accession no. NP_828849.2)

Product Application Details	
Applications	Western Blot, ELISA, Immunocytochemistry/ Immunofluorescence
Recommended Dilutions	Western Blot 1:2000-1:10000, ELISA 1:10000-1:50000, Immunocytochemistry/ Immunofluorescence 1:10-1:500
Application Notes	This protein A purified antibody has been tested for use in ELISA and by western blot. Expect a band approximately 34 kDa in size corresponding - SARS 3CL Protease by western blotting in the appropriate cell lysate or extract.

Images

Western Blot: SARS-CoV 3CL Protease Antibody [NBP1-78110] - Shows detection of a 34-kDa band corresponding to the protein. Approx. 100 ug of protein was loaded for SDS-PAGE and transferred onto nitrocellulose. The blot was incubated with a 1:5,000 dilution of the antibody at room temperature for 1 h followed by detection using IRDye (TM) 800 labeled Goat-a-Rabbit IgG [H&L] diluted 1:10,000.





Novus Biologicals USA

10730 E. Briarwood Avenue
Centennial, CO 80112
USA
Phone: 303.730.1950
Toll Free: 1.888.506.6887
Fax: 303.730.1966
nb-customerservice@bio-techne.com

Bio-Techne Canada

21 Canmotor Ave
Toronto, ON M8Z 4E6
Canada
Phone: 905.827.6400
Toll Free: 855.668.8722
Fax: 905.827.6402
canada.inquires@bio-techne.com

Bio-Techne Ltd

19 Barton Lane
Abingdon Science Park
Abingdon, OX14 3NB, United Kingdom
Phone: (44) (0) 1235 529449
Free Phone: 0800 37 34 15
Fax: (44) (0) 1235 533420
info.EMEA@bio-techne.com

General Contact Information

www.novusbio.com
Technical Support: nb-technical@bio-
techne.com
Orders: nb-customerservice@bio-techne.com
General: novus@novusbio.com

Limitations

This product is for research use only and is not approved for use in humans or in clinical diagnosis. Primary Antibodies are guaranteed for 1 year from date of receipt.

For more information on our 100% guarantee, please visit www.novusbio.com/guarantee

Earn gift cards/discounts by submitting a review: www.novusbio.com/reviews/submit/NBP1-78110

Earn gift cards/discounts by submitting a publication using this product:
www.novusbio.com/publications

