

Product Datasheet

TORC1 Antibody - BSA Free

NBP1-77940

Unit Size: 0.1 mg

Store at -20C short term. Aliquot and store at -80C long term. Avoid freeze-thaw cycles.

www.novusbio.com



technical@novusbio.com

Protocols, Publications, Related Products, Reviews, Research Tools and Images at:
www.novusbio.com/NBP1-77940

Updated 2/21/2025 v.20.1

Earn rewards for product
reviews and publications.

Submit a publication at www.novusbio.com/publications

Submit a review at www.novusbio.com/reviews/destination/NBP1-77940



NBP1-77940

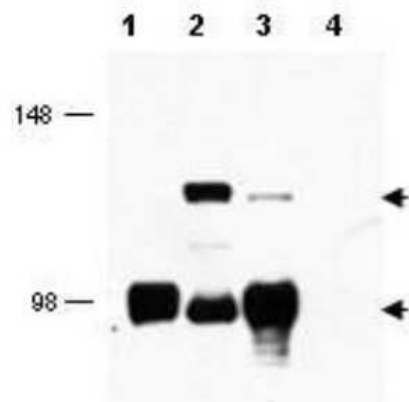
TORC1 Antibody - BSA Free

Product Information	
Unit Size	0.1 mg
Concentration	Please see the vial label for concentration. If unlisted please contact technical services.
Storage	Store at -20C short term. Aliquot and store at -80C long term. Avoid freeze-thaw cycles.
Clonality	Polyclonal
Preservative	0.01% Sodium Azide
Isotype	IgG
Purity	Immunogen affinity purified
Buffer	0.02 M Potassium Phosphate, 0.15 M Sodium Chloride, pH 7.2
Product Description	
Description	<p>This affinity-purified antibody is directed against human TORC1 protein. The product was affinity purified from monospecific antiserum by immunoaffinity purification</p> <p>Store vial at -20C prior to opening. Aliquot contents and freeze at -20C or below for extended storage. Avoid cycles of freezing and thawing. Centrifuge product if not completely clear after standing at room temperature. This product is stable for several weeks at 4C as an undiluted liquid. Dilute only prior to immediate use.</p>
Host	Rabbit
Gene ID	23373
Gene Symbol	CRTC1
Species	Human, Mouse, Rat, Bovine, Pufferfish, Zebrafish
Reactivity Notes	A BLAST analysis was used to suggest cross reactivity with TORC1 protein from human, mouse, rat, zebrafish, pufferfish and bovine based on 100% homology with the immunizing sequence. Reactivity against homologues from other sources is not known.
Specificity/Sensitivity	This affinity-purified antibody is directed against human TORC1 protein.
Immunogen	This affinity purified TORC1 Antibody was prepared from whole rabbit serum produced by repeated immunizations with a synthetic peptide corresponding to amino acids 19-34 of human TORC1 protein. (Uniprot: Q6UUV9)
Product Application Details	
Applications	Western Blot, ELISA
Recommended Dilutions	Western Blot 1:500-1:2000, ELISA 1:10000-1:40000
Application Notes	This affinity-purified antibody has been tested for use in ELISA and western blot. Specific conditions for reactivity should be optimized by the end user. Expect a band approximately 80-95 kDa in size corresponding to MECT1 protein by western blotting in the appropriate cell lysate or extract. This antibody is will react with isoform 1 and 2 of MECT1.

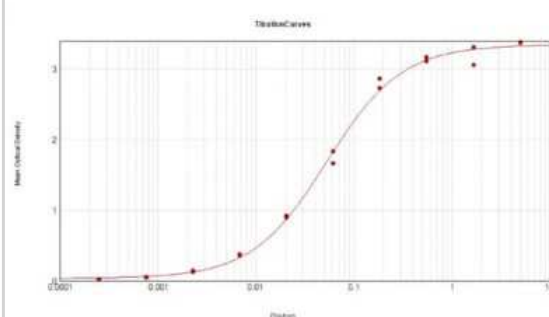


Images

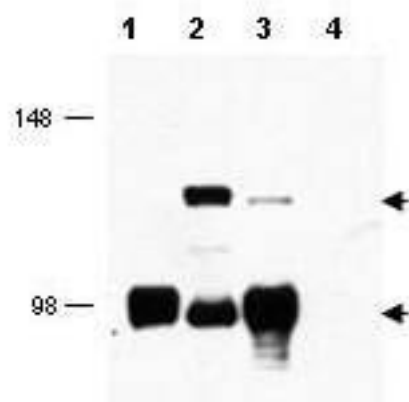
Western Blot: TORC1 Antibody [NBP1-77940] - Western blot using affinity purified TORC1 antibody shows detection of endogenous TORC1 (lower arrowhead) and TORC1-MAML2 fusion protein (top arrowhead) in cell lysates. Lane 1 contains lysate from cells expressing TORC1 only. Lane 2 contains lysate from cells transfected with fusion protein. Lane 3 contains lysate from cells strongly expressing TORC1 and weakly expressing the fusion protein. Lane 4 contains lysate from control cells. After SDS-PAGE and transfer, the membrane was probed with the primary antibody diluted to 1:1,000.



ELISA: TORC1 Antibody [NBP1-77940] - ELISA Results of TORC1 antibody tested against BSA-conjugated peptide of immunizing peptide. Each well was coated in duplicate with 0.1ug of conjugate. The working dilution is 1: 19,000. The starting dilution of antibody was 5ug/ml and the X-axis represents the Log10 of a 3-fold dilution. This titration is a 4-parameter curve fit where the IC50 is defined as the titer of the antibody. Assay performed using HRP Conjugate stabilizer, Goat Anti-Rabbit HRP conjugated and TMB substrate.



Western blot using affinity purified anti-MECT1 antibody shows detection of endogenous MECT1 (lower arrowhead) and MECT1-MAML2 fusion protein (top arrowhead) in cell lysates. Lane 1 contains lysate from cells expressing MECT1 only. Lane 2 contains lysate from cells transfected with fusion protein. Lane 3 contains lysate from cells strongly expressing MECT1 and weakly expressing the fusion protein. Lane 4 contains lysate from control cells. After SDS-PAGE and transfer, the membrane was probed with the primary antibody diluted to 1:1,000. Personal Communication, Frederick Kaye, CCR-NCI, Bethesda, MD.





Novus Biologicals USA

10730 E. Briarwood Avenue
Centennial, CO 80112
USA
Phone: 303.730.1950
Toll Free: 1.888.506.6887
Fax: 303.730.1966
nb-customerservice@bio-techne.com

Bio-Techne Canada

21 Canmotor Ave
Toronto, ON M8Z 4E6
Canada
Phone: 905.827.6400
Toll Free: 855.668.8722
Fax: 905.827.6402
canada.inquires@bio-techne.com

Bio-Techne Ltd

19 Barton Lane
Abingdon Science Park
Abingdon, OX14 3NB, United Kingdom
Phone: (44) (0) 1235 529449
Free Phone: 0800 37 34 15
Fax: (44) (0) 1235 533420
info.EMEA@bio-techne.com

General Contact Information

www.novusbio.com
Technical Support: nb-technical@bio-techne.com
Orders: nb-customerservice@bio-techne.com
General: novus@novusbio.com

Products Related to NBP1-77940

HAF008	Goat anti-Rabbit IgG Secondary Antibody [HRP]
NB7160	Goat anti-Rabbit IgG (H+L) Secondary Antibody [HRP]
NBP2-24891	Rabbit IgG Isotype Control
H00023373-Q01-10ug	Recombinant Human TORC1 GST (N-Term) Protein

Limitations

This product is for research use only and is not approved for use in humans or in clinical diagnosis. Primary Antibodies are guaranteed for 1 year from date of receipt.

For more information on our 100% guarantee, please visit www.novusbio.com/guarantee

Earn gift cards/discounts by submitting a review: www.novusbio.com/reviews/submit/NBP1-77940

Earn gift cards/discounts by submitting a publication using this product:
www.novusbio.com/publications

