

Product Datasheet

ECT2 [p Thr790] Antibody - BSA Free NBP1-77939

Unit Size: 0.1 mg

Store at -20C short term. Aliquot and store at -80C long term. Avoid freeze-thaw cycles.

www.novusbio.com



technical@novusbio.com

Protocols, Publications, Related Products, Reviews, Research Tools and Images at:
www.novusbio.com/NBP1-77939

Updated 2/21/2025 v.20.1

Earn rewards for product
reviews and publications.

Submit a publication at www.novusbio.com/publications

Submit a review at www.novusbio.com/reviews/destination/NBP1-77939



NBP1-77939

ECT2 [p Thr790] Antibody - BSA Free

Product Information	
Unit Size	0.1 mg
Concentration	Please see the vial label for concentration. If unlisted please contact technical services.
Storage	Store at -20C short term. Aliquot and store at -80C long term. Avoid freeze-thaw cycles.
Clonality	Polyclonal
Preservative	0.01% Sodium Azide
Isotype	IgG
Purity	Immunogen affinity purified
Buffer	0.02 M Potassium Phosphate, 0.15 M Sodium Chloride, pH 7.2

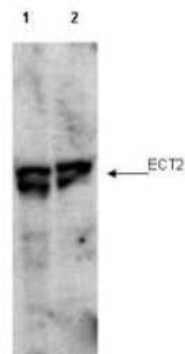
Product Description	
Description	<p>This affinity-purified antibody is directed against the phosphorylated form of human ECT2 protein at the [p Thr790] residue. The product was affinity purified from monospecific antiserum by immunoaffinity purification. Antiserum was first purified against the phosphorylated form of the immunizing peptide. The resultant affinity purified antibody was then cross-adsorbed against the non-phosphorylated form of the immunizing peptide</p> <p>Store vial at -20C prior to opening. Aliquot contents and freeze at -20C or below for extended storage. Avoid cycles of freezing and thawing. Centrifuge product if not completely clear after standing at room temperature. This product is stable for several weeks at 4C as an undiluted liquid. Dilute only prior to immediate use.</p>
Host	Rabbit
Gene ID	1894
Gene Symbol	ECT2
Species	Human
Reactivity Notes	A BLAST analysis was used to suggest cross reactivity with ECT2 protein from human, mouse, rat, zebrafish, chimpanzee, chicken, and dog based on 100% homology with the immunizing sequence. Reactivity against homologues from other sources is not known.
Specificity/Sensitivity	<p>This affinity-purified antibody is directed against the phosphorylated form of human ECT2 protein at the pT790 residue. The resultant affinity purified antibody was then cross-adsorbed against the non-phosphorylated form of the immunizing peptide. Reactivity occurs against human ECT2 protein at the pT790 residue. By ELISA the antibody is specific for the phosphorylated form of the protein. Reactivity with non-phosphorylated human ECT2 is minimal by ELISA, but western blot shows specific staining of interphase cell lysates, which are predicted to contain non-phosphorylated ECT2. Additional experiments are underway to clarify antibody specificity. A BLAST analysis was used to suggest cross reactivity with ECT2 protein from human, mouse, rat, zebrafish, chimpanzee, chicken, and dog based on 100% homology with the immunizing sequence. Reactivity against homologues from other sources is not known.</p>
Immunogen	This affinity purified ECT2 [p Thr790] Antibody was prepared from whole rabbit serum produced by repeated immunizations with a synthetic peptide corresponding to an internal region of human ECT2 protein. (Uniprot: Q9H8V3)

Product Application Details

Applications	Western Blot, ELISA, Immunoprecipitation
Recommended Dilutions	Western Blot 1:1000-1:4000, ELISA 1:10000-1:40000, Immunoprecipitation
Application Notes	This affinity-purified antibody has been tested for use in ELISA, western blot and immunoprecipitation. Specific conditions for reactivity should be optimized by the end user. Expect a band approximately 101 kDa in size by western blotting in the appropriate cell lysate or extract. Less than 2% reactivity is observed against the non-phosphorylated form of the immunizing peptide. This antibody is believed to be phospho specific for ECT2 phosphorylated at the pT790 residue. Experiments to generate more conclusive evidence are currently under preparation.

Images

Western Blot: ECT2 [p Thr790] Antibody [NBP1-77939] - Shows detection of endogenous phosphorylated ECT2 (arrowhead) present in cell lysates from interphase (lane 1) and mitotic (lane 2) HeLa cells. Despite specific staining of interphase cells, this reagent is believed to be phospho specific based on ELISA results using both phosphorylated and non-phosphorylated immunizing peptide. After SDS-PAGE and transfer, the membrane was probed with the primary antibody diluted to 1:1,000. Personal Communication, Toru Miki, CCR-NCI, Bethesda, MD.





Novus Biologicals USA

10730 E. Briarwood Avenue
Centennial, CO 80112
USA
Phone: 303.730.1950
Toll Free: 1.888.506.6887
Fax: 303.730.1966
nb-customerservice@bio-techne.com

Bio-Techne Canada

21 Canmotor Ave
Toronto, ON M8Z 4E6
Canada
Phone: 905.827.6400
Toll Free: 855.668.8722
Fax: 905.827.6402
canada.inquires@bio-techne.com

Bio-Techne Ltd

19 Barton Lane
Abingdon Science Park
Abingdon, OX14 3NB, United Kingdom
Phone: (44) (0) 1235 529449
Free Phone: 0800 37 34 15
Fax: (44) (0) 1235 533420
info.EMEA@bio-techne.com

General Contact Information

www.novusbio.com
Technical Support: nb-technical@bio-techne.com
Orders: nb-customerservice@bio-techne.com
General: novus@novusbio.com

Products Related to NBP1-77939

HAF008	Goat anti-Rabbit IgG Secondary Antibody [HRP]
NB7160	Goat anti-Rabbit IgG (H+L) Secondary Antibody [HRP]
NBP2-24891	Rabbit IgG Isotype Control
NBP2-68630PEP	ECT2 Recombinant Protein Antigen

Limitations

This product is for research use only and is not approved for use in humans or in clinical diagnosis. Primary Antibodies are guaranteed for 1 year from date of receipt.

For more information on our 100% guarantee, please visit www.novusbio.com/guarantee

Earn gift cards/discounts by submitting a review: www.novusbio.com/reviews/submit/NBP1-77939

Earn gift cards/discounts by submitting a publication using this product:
www.novusbio.com/publications

