

# Product Datasheet

## L1/ORF2 Antibody - BSA Free

### NBP1-77929

Unit Size: 0.1 mg

Store at -20C short term. Aliquot and store at -80C long term. Avoid freeze-thaw cycles.

[www.novusbio.com](http://www.novusbio.com)



[technical@novusbio.com](mailto:technical@novusbio.com)

Protocols, Publications, Related Products, Reviews, Research Tools and Images at:  
[www.novusbio.com/NBP1-77929](http://www.novusbio.com/NBP1-77929)

Updated 2/21/2025 v.20.1

Earn rewards for product  
reviews and publications.

Submit a publication at [www.novusbio.com/publications](http://www.novusbio.com/publications)

Submit a review at [www.novusbio.com/reviews/destination/NBP1-77929](http://www.novusbio.com/reviews/destination/NBP1-77929)



**NBP1-77929**

L1/ORF2 Antibody - BSA Free

Product Information	
Unit Size	0.1 mg
Concentration	Please see the vial label for concentration. If unlisted please contact technical services.
Storage	Store at -20C short term. Aliquot and store at -80C long term. Avoid freeze-thaw cycles.
Clonality	Polyclonal
Preservative	0.01% Sodium Azide
Isotype	IgY
Purity	Multi-step
Buffer	0.02 M Potassium Phosphate, 0.15 M Sodium Chloride, pH 7.2
Product Description	
Description	<p>This product is an IgY fraction antibody purified from monospecific chicken egg yolks by a multi-step process which includes selective precipitation and salt fractionation followed by extensive dialysis against the buffer stated above</p> <p>Chicken products cannot be exported to Canada.</p> <p>Store vial at -20C prior to opening. Aliquot contents and freeze at -20C or below for extended storage. Avoid cycles of freezing and thawing. Centrifuge product if not completely clear after standing at room temperature. This product is stable for several weeks at 4C as an undiluted liquid. Dilute only prior to immediate use.</p>
Host	Chicken
Species	Human, Chimpanzee
Reactivity Notes	A BLAST analysis was used to suggest cross reactivity with L1/ORF2 proteins from chimpanzee sources based on 100% homology with the immunizing sequences, and from macaque, fruit fly, cattle, dog, opossum, and rat sources based on 69 - 88% homology with the immunizing sequences.
Specificity/Sensitivity	L1/ORF2 Antibody is directed against two regions within the endonuclease domain of L1 ORF2 protein. Reactivity occurs against human L1/ORF2 protein and is useful in determining its presence in various assays. A BLAST analysis was used to suggest cross reactivity with L1/ORF2 proteins from chimpanzee sources based on 100% homology with the immunizing sequences, and from macaque, fruit fly, cattle, dog, opossum, and rat sources based on 69 - 88% homology with the immunizing sequences.
Immunogen	This IgY fraction L1/ORF2 Antibody was prepared from eggs of chickens laid after repeated immunizations with two synthetic peptides conjugated to keyhole limpet hemocyanin (KLH). The peptides correspond to regions within the endonuclease domain of L1/ORF2 protein. (Uniprot: O00370)
Notes	Chicken products cannot be exported to Canada.
Product Application Details	
Applications	Western Blot, ELISA
Recommended Dilutions	Western Blot 1:2000-1:10000, ELISA 1:10000

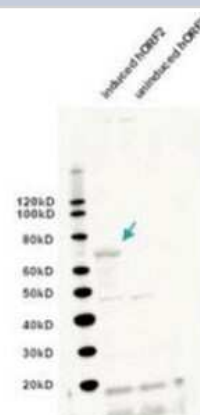


**Application Notes**

This product has been tested for use in ELISA and western blot. Specific conditions for reactivity should be optimized by the end user. Expect a band approximately 149 kDa in size corresponding to L1 protein by western blotting in the appropriate cell lysate or extract.

**Images**

Western Blot: ODF2 Antibody [NBP1-77929] - IgY fraction of anti-L1/ORF2 antibody shows detection of induced bacterially expressed human ORF2 (left lane). No specific band staining is seen in the uninduced lane (right lane). The lower molecular weight bands represent non-specific staining. The band at ~70 kDa corresponds to a human L1/ORF2 EN domain fusion protein (arrowhead).





### **Novus Biologicals USA**

10730 E. Briarwood Avenue  
Centennial, CO 80112  
USA  
Phone: 303.730.1950  
Toll Free: 1.888.506.6887  
Fax: 303.730.1966  
nb-customerservice@bio-techne.com

### **Bio-Techne Canada**

21 Canmotor Ave  
Toronto, ON M8Z 4E6  
Canada  
Phone: 905.827.6400  
Toll Free: 855.668.8722  
Fax: 905.827.6402  
canada.inquires@bio-techne.com

### **Bio-Techne Ltd**

19 Barton Lane  
Abingdon Science Park  
Abingdon, OX14 3NB, United Kingdom  
Phone: (44) (0) 1235 529449  
Free Phone: 0800 37 34 15  
Fax: (44) (0) 1235 533420  
info.EMEA@bio-techne.com

### **General Contact Information**

www.novusbio.com  
Technical Support: nb-technical@bio-techne.com  
Orders: nb-customerservice@bio-techne.com  
General: novus@novusbio.com

### **Products Related to NBP1-77929**

---

BAF010	Goat anti-Chicken IgY Secondary Antibody [Biotin]
NB7276	Goat anti-Chicken IgM Heavy Chain Secondary Antibody

---

### **Limitations**

This product is for research use only and is not approved for use in humans or in clinical diagnosis. Primary Antibodies are guaranteed for 1 year from date of receipt.

For more information on our 100% guarantee, please visit [www.novusbio.com/guarantee](http://www.novusbio.com/guarantee)

Earn gift cards/discounts by submitting a review: [www.novusbio.com/reviews/submit/NBP1-77929](http://www.novusbio.com/reviews/submit/NBP1-77929)

Earn gift cards/discounts by submitting a publication using this product:  
[www.novusbio.com/publications](http://www.novusbio.com/publications)

